

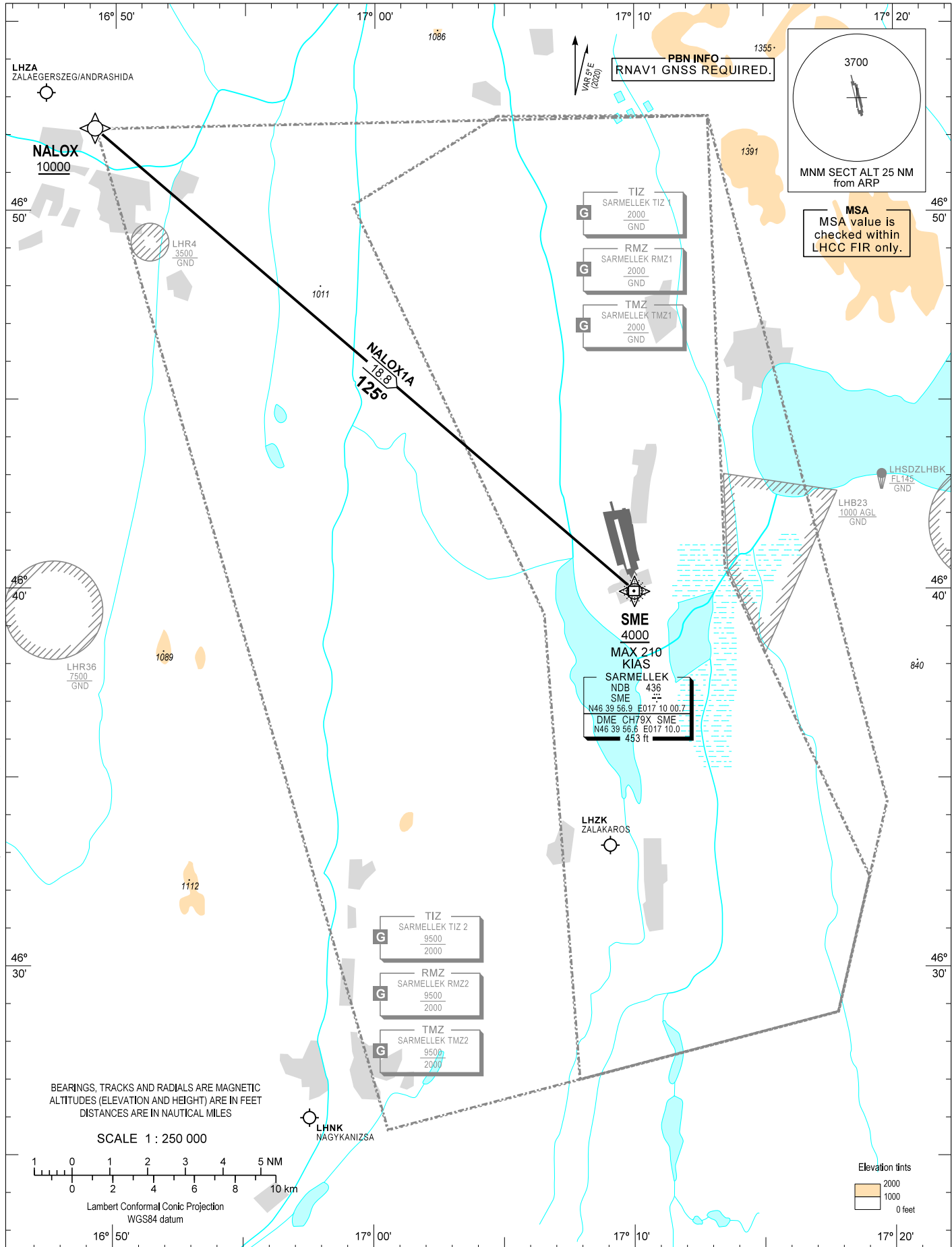
AIP HUNGARY

STANDARD ARRIVAL CHART -  
INSTRUMENT (STAR) -  
ICAO

TRANSITION ALTITUDE  
10000

BALATON INFO 134.585  
BUDAPEST INFORMATION (WEST) 125.500

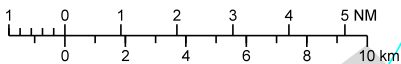
HÉVÍZ/BALATON  
RNAV RWY 16 / 34  
NALOX1A



CHANGE: SARMELLEK CTR, SARMELLEK CTA deleted, chart symbols (RMZ, TMZ) updated, airspace updated, air traffic service TWR withdrawn

BEARINGS, TRACKS AND RADIALS ARE MAGNETIC  
ALTITUDES (ELEVATION AND HEIGHT) ARE IN FEET  
DISTANCES ARE IN NAUTICAL MILES

SCALE 1 : 250 000



Lambert Conformal Conic Projection  
WGS84 datum

Elevation tints  
2000  
1000  
0 feet

**AD 2 LHSM STANDARD ARRIVAL CHART INSTRUMENT RWY 16 / 34**

STAR NAME	PROCEDURE
<b>NALOX1A</b> (NALOX ONE ALPHA ARRIVAL)	From NALOX at or above 10000. To SME at or above 4000, maximum speed 210 KIAS.

**WAYPOINT COORDINATES**

WP ID	Latitude	Longitude
NALOX	N46 52 10.5	E016 49 12.3
SME	N46 39 56.9	E017 10 00.7