

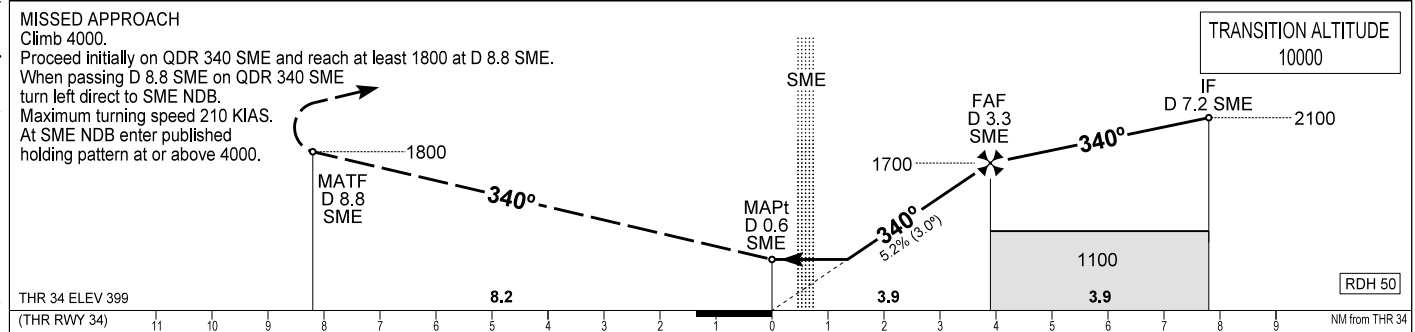
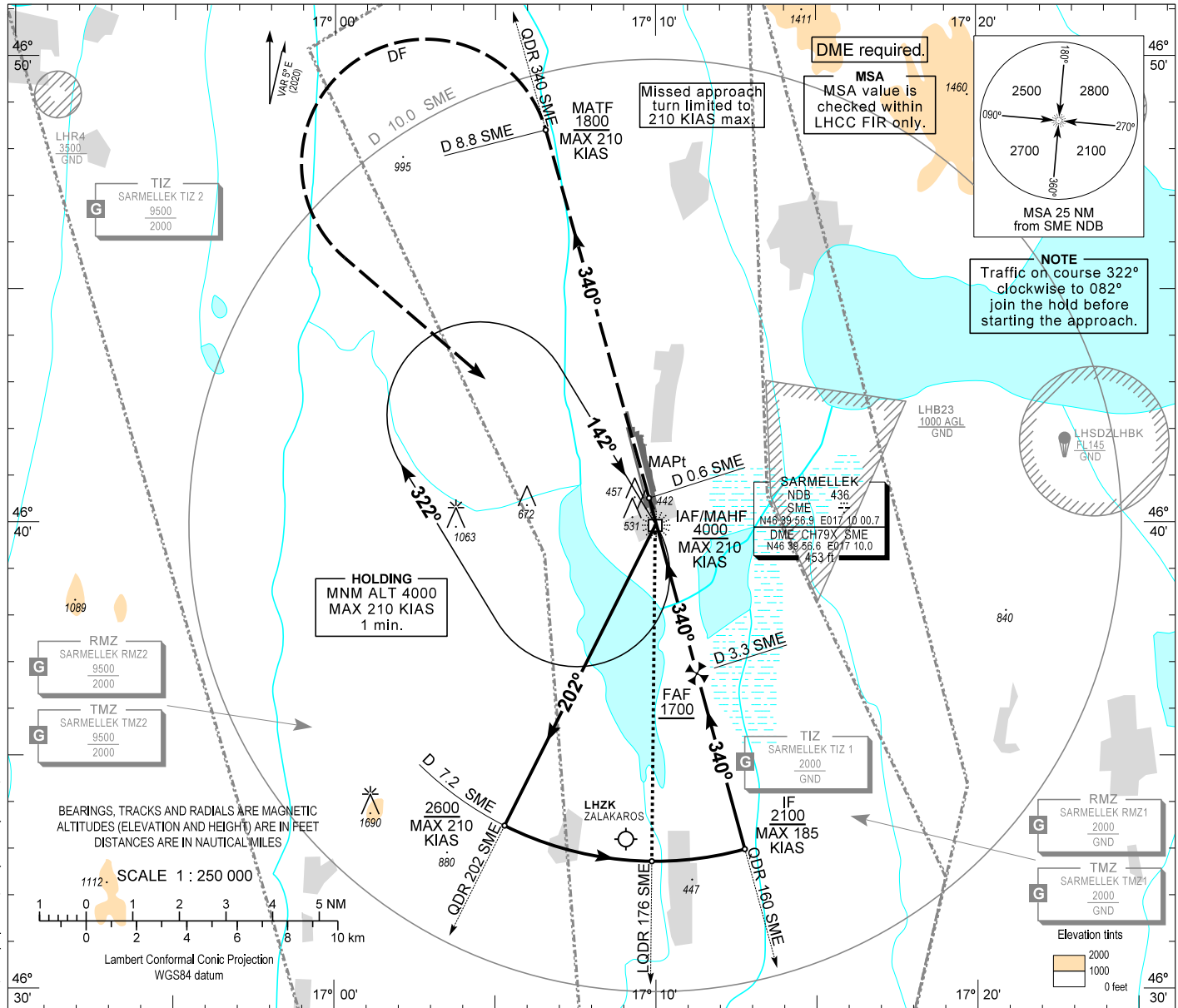
AIP HUNGARY

INSTRUMENT
APPROACH
CHART - ICAO

AERODROME ELEV 408
HEIGHTS RELATED TO
THR RWY 34 - ELEV 399

BALATON INFO 134.585
BUDAPEST INFORMATION (WEST) 125.500

HÉVÍZ/BALATON
NDB, RWY 34
(ACFT CAT A, B, C, D)



OCA (OCH)					DIST THR / RWY 34								
					NM 3.9 3.0 2.0								
STRAIGHT-IN APPROACH					ALTITUDE								
790 (400)					ft 1700 1400 1090								
CIRCLING APPROACH	ft AMSL	840	980	NOT AUTHORIZED	NOT AUTHORIZED	Timing not authorized to define the MAPt.							
	VIS. m	1900	2800			GROUND SPEED							
						kt	60	90	120	150	180		
						FAF - MAPt 3.9 NM		min:sec	3:54	2:36	1:57	1:34	1:18
						Rate of descent (319 ft/NM)		ft/min	320	480	640	800	960

CHANGE: SARMELLEK CTR - SARMELLEK CTA deleted, chart symbols (RMZ, TMZ) updated, airspace updated, air traffic service TWR withdrawn

AD 2 LHSM INSTRUMENT APPROACH CHART NDB RWY 34

NDB approach procedure:

Initial altitude at or above 4000.
Leave SME NDB on QDR 202 SME and descend 2600.
At D 7.2 SME turn left and join CCW D 7.2 SME DME arc.
After crossing LQDR 176 SME leading QDR turn left and intercept QDM 340 SME (final track), descend 1700.
When crossing D 3.3 SME DME (FAF) descend to published minimum altitude.

Holding procedure:

Holding fix: SME NDB.
Right hand holding pattern.
Maximum speed: 210 KIAS
Inbound track: 142°
Outbound track: 322°
Rate of turn: 3°/sec. or 25° bank angle
(whichever requires lesser bank)
Outbound timing: 1 min
Minimum holding altitude: 4000

Traffic on course 065°
clockwise to 185°
join the hold before
starting the approach.