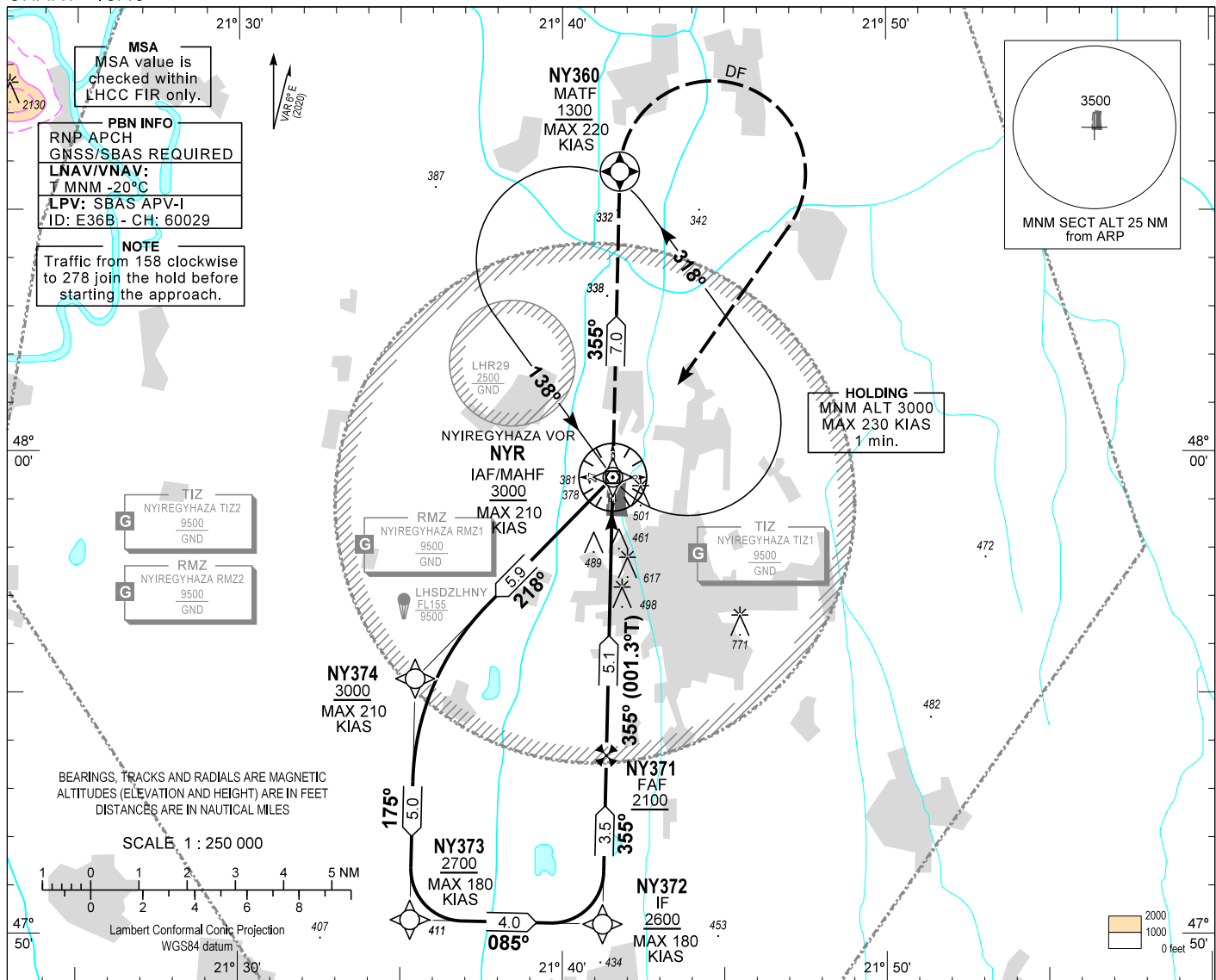


AIP HUNGARY

INSTRUMENT APPROACH CHART - ICAO
AERODROME ELEV 338
HEIGHTS RELATED TO THR RWY 36 - ELEV 338

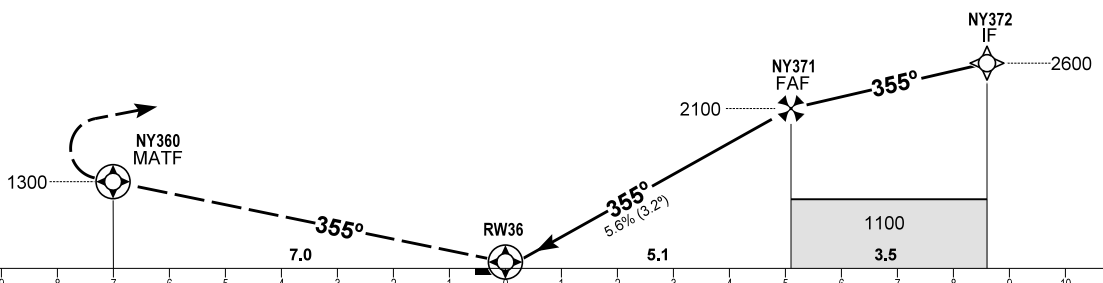
NYIREGYHÁZA INFO 119.410
BUDAPEST INFORMATION (EAST) 133.000

NYIREGYHÁZA
RNP Y RWY 36
(ACFT CAT B, C)



MISSED APPROACH
Climb to NY360 at or above 1300.
Turn right direct to NYR and enter holding at or above 3000.
Maximum turning speed: 220 KIAS.

TRANSITION ALTITUDE
10000



OCA (OCH)		B	C	DIST THR / RW36						
				NM	5.0	4.0	3.0	2.0	1.0	
STRAIGHT-IN APPROACH	LNAV	880 (550)		ALTITUDE	ft	2080	1740	1400	1060	720
	LNAV/VNAV	770 (432)	778 (440)	GROUND SPEED	kt	60	90	120	150	180
	LPV	613 (275)	621 (283)	FAF - RW36 5.1 NM	min:sec	5:04	3:23	2:32	2:02	1:41
				Rate of descent (340 ft/NM)	ft/min	340	510	680	850	1020

CHANGE: chart symbols (RMZ, TMZ) updated

AD 2 LHNY INSTRUMENT APPROACH CHART RNP Y RWY 36

PT	WP ID	Role	OverFly	Bearing/ (Len Dur)	Turn Direction	Altitude (FT)	IAS (KT)	VRT ANG	NAV PERF
IF	NYR	IAF				+3000	-210		RNP APCH
TF	NY374			224.4 T/5.9 NM		+3000	-210		RNP APCH
TF	NY373			181.2 T/5.0 NM		+2700	-180		RNP APCH
TF	NY372	IF		091.2 T/4.0 NM		+2600	-180		RNP APCH
TF	NY371	FAF		001.3 T/3.5 NM		+2100			RNP APCH
TF	RW36	LTP	Y	001.3 T/5.1 NM		+378		-3.2°	RNP APCH
TF	NY360	MATF	Y	001.3 T/7.0 NM		+1300	-220		RNP APCH
DF	NYR				R	+3000	-220		RNP APCH
HM	NYR	MAHF		144.0 T/1 min	L	+3000	-230		RNP APCH

SBAS FAS Data Block Coding Data

FAS-DB (CRC wrapped data)

Operation type	0
SBAS Provider	1
Airport identifier	LHNY
Runway	36
Approach Performance Designator	0
Route indicator	Y
Reference Path Data Selector	0
Reference Path Identifier	E36B
LTP/FTP Latitude	475846.2200N
LTP/FTP Longitude	0214131.7700E
LTP/FTP Ellipsoidal Height (m)	143.3
FPAP Latitude	475941.0845N
FPAP Longitude	0214133.6480E
Threshold Crossing Height	40
TCH Units Selector	0
Glidepath Angle (degrees)	3.20
Course Width (m)	105.00
Length Offset (m)	696
HAL (m)	40.0
VAL (m)	50.0
Data Block	10 19 0E 08 0C 24 C8 00 02 36 33 05 98 2F 97 14 F4 2B 4F 09 99 19 A1 AC 01 AC 0E 00 90 01 40 01 64 57 C8 FA E0 12 7F 61
Calculated CRC Value	E0127F61
FAS-DB (not CRC wrapped data)	
ICAO Code	LH
LTP/FTP Orthometric Height (m)	103.0

WAYPOINT COORDINATES

WP ID	Latitude	Longitude
NYR	N47 59 28.3	E021 41 33.2
NY374	N47 55 17.6	E021 35 27.7
NY373	N47 50 17.9	E021 35 18.1
NY372	N47 50 12.5	E021 41 14.2
NY371	N47 53 42.3	E021 41 21.4
RW36	N47 58 46.2	E021 41 31.8
NY360	N48 05 48.3	E021 41 46.3

Holding procedure

Holding fix: NYR
 Left hand holding pattern.
 Maximum speed: 230 KIAS
 Inbound track: 138°
 Outbound track: 318°
 Rate of turn: 3°/sec. or 25° bank angle
 (whichever requires lesser bank)
 Outbound times: 1 min.
 Minimum holding altitude: 3000