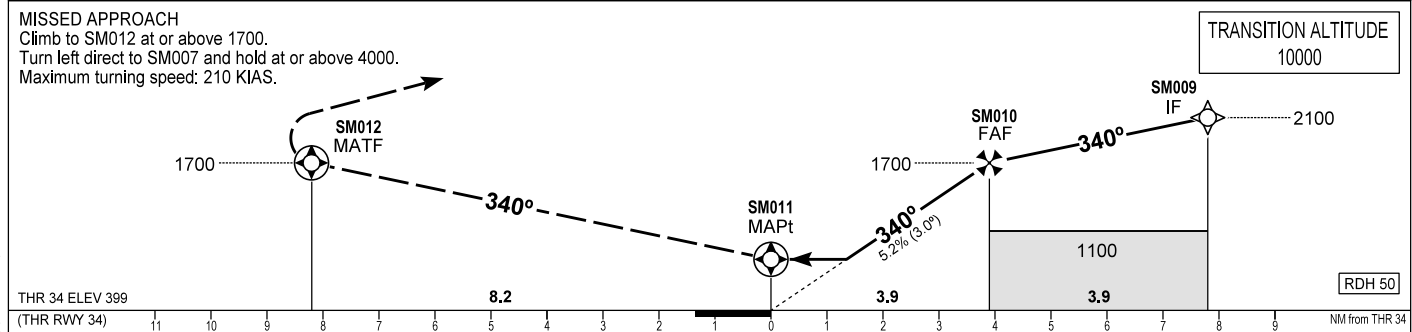
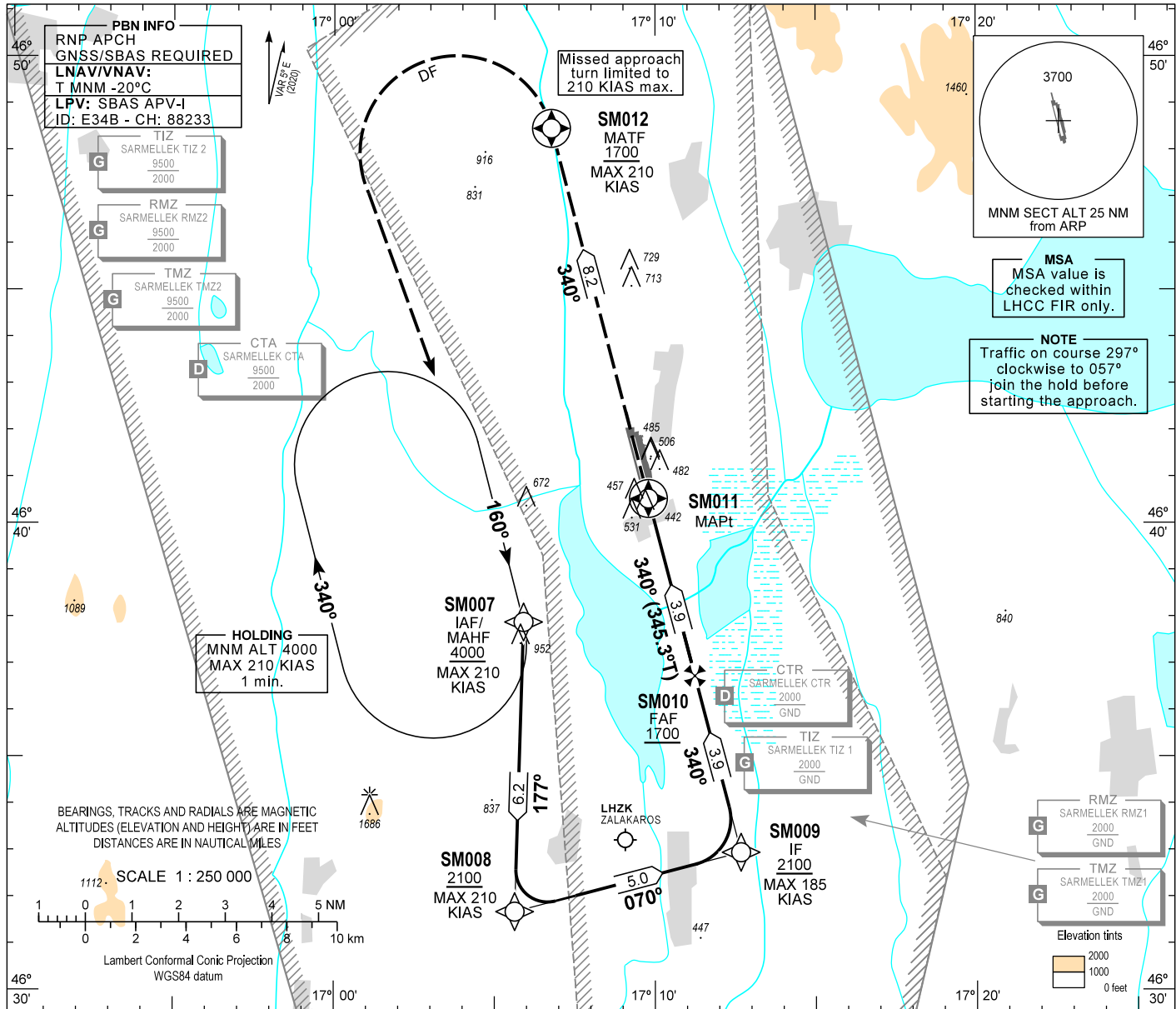


AIP HUNGARY

INSTRUMENT APPROACH CHART - ICAO
AERODROME ELEV 408
HEIGHTS RELATED TO THR RWY 34 - ELEV 399

BALATON TOWER 134.585
BALATON INFO 134.585
BUDAPEST INFORMATION (WEST) 125.500

HÉVÍZ/BALATON
RNP RWY 34
(ACFT CAT A, B, C, D)



OCA (OCH)		A	B	C	D	DIST THR / SM011	NM	3.9	3.0	2.0		
		790 (400)									ft	1700
STRAIGHT-IN APPROACH	LNAV	790 (400)										
	LNAV/VNAV	661 (262)	673 (274)	682 (283)	692 (293)							
	LPV	625 (226)	637 (238)	645 (246)	656 (257)							
CIRCLING	ft AMSL	840	980	NOT AUTHORIZED	NOT AUTHORIZED	GROUND SPEED	kt	60	90	120	150	180
	VIS. m	1900	2800	NOT AUTHORIZED	NOT AUTHORIZED	FAF - SM011 3.9 NM	min:sec	3:54	2:36	1:57	1:34	1:18
						Rate of descent (319 ft/NM)	ft/min	320	480	640	800	960

CHANGE: LNAV/VNAV approach is published

AD 2 LHSM INSTRUMENT APPROACH CHART RNP RWY 34

PT	WP ID	Role	OverFly	Bearing/ (Len Dur)	Turn Direction	Altitude (FT)	IAS (KT)	VRT ANG	NAV PERF
IF	SM007	IAF				+4000	-210		RNP APCH
TF	SM008			181.7 T/6.2 NM		+2100	-210		RNP APCH
TF	SM009	IF		075.4 T/5.0 NM		+2100	-185		RNP APCH
TF	SM010	FAF		345.4 T/3.9 NM		+1700			RNP APCH
TF	SM011	MAPt	Y	345.3 T/3.9 NM		+449		-3.0°	RNP APCH
TF	SM012	MATF	Y	345.3 T/8.2 NM		+1700	-210		RNP APCH
DF	SM007				L	+4000	-210		RNP APCH
HM	SM007	MAHF		165.0 T/1 min	R	+4000	-210		RNP APCH

SBAS FAS Data Block Coding Data

FAS-DB (CRC wrapped data)

Operation type	0
SBAS Provider	1
Airport identifier	LHSM
Runway	34
Approach Performance Designator	0
Route indicator	
Reference Path Data Selector	0
Reference Path Identifier	E34B
LTP/FTP Latitude	464031.8170N
LTP/FTP Longitude	0170947.4020E
LTP/FTP Ellipsoidal Height (m)	167.5
FPAP Latitude	464150.1430N
FPAP Longitude	0170917.6120E
Threshold Crossing Height	50
TCH Units Selector	0
Glidepath Angle (degrees)	3.00
Course Width (m)	105
Length Offset (m)	0
HAL (m)	40
VAL (m)	50
Data Block	10 0D 13 08 0C 22 00 00 02 34 33 05 92 EC 07 14 14 9A 5D 07 8B 1A EC 63 02 44 17 FF F4 01 2C 01 64 00 C8 FA 9C 0D 12 1F
Calculated CRC Value	9C0D121F
FAS-DB (not CRC wrapped data)	
ICAO Code	LH
LTP/FTP Orthometric Height (m)	121.5

WAYPOINT COORDINATES

WP ID	Latitude	Longitude
SM007	N46 37 53.0	E017 05 54.2
SM008	N46 31 40.7	E017 05 37.8
SM009	N46 32 57.0	E017 12 40.0
SM010	N46 36 43.8	E017 11 14.1
SM011	N46 40 31.8	E017 09 47.4
SM012	N46 48 27.6	E017 06 46.1

Holding procedure

Holding fix: SM007
 Right hand holding pattern.
 Maximum speed: 210 KIAS
 Inbound track: 160°
 Outbound track: 340°
 Rate of turn: 3°/sec. or 25° bank angle
 (whichever requires lesser bank)
 Outbound times: 1 min.
 Minimum holding altitude: 4000

**ENTERING THE HOLDING
AT OR ABOVE 2700
IS OBSTACLE FREE**