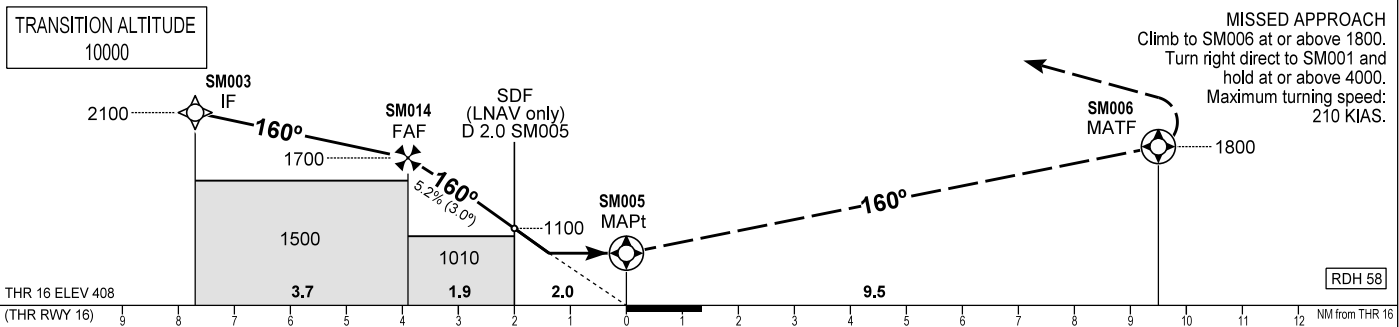
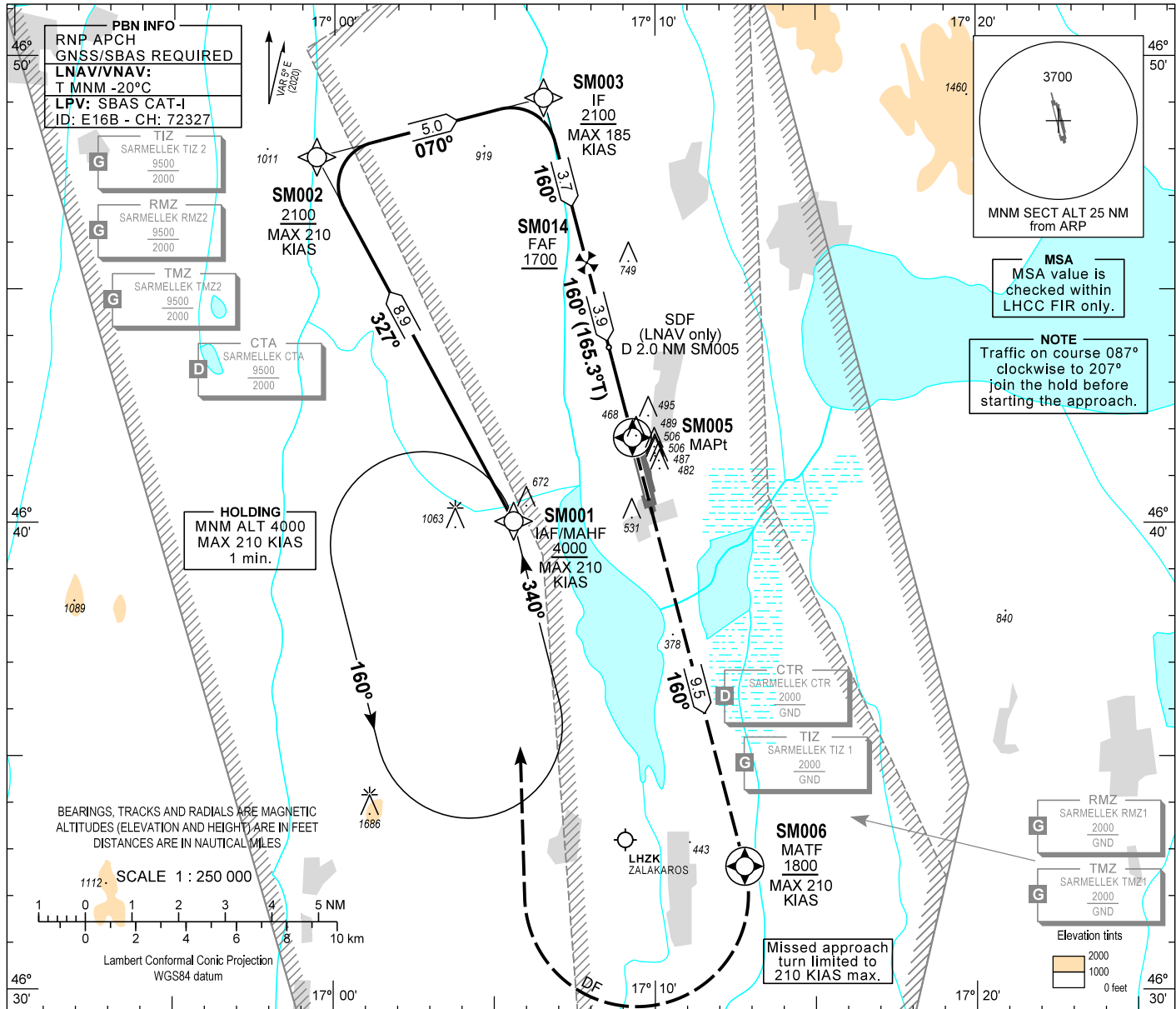


AIP HUNGARY

INSTRUMENT APPROACH CHART - ICAO
AERODROME ELEV 408
HEIGHTS RELATED TO THR RWY 16 - ELEV 408

BALATON TOWER 134.585
BALATON INFO 134.585
BUDAPEST INFORMATION (WEST) 125.500

HÉVÍZ/BALATON
RNP RWY 16
(ACFT CAT A, B, C, D)



CHANGE: LNAV/VNAV approach is published

OCA (OCH)	A				B				C				D									
	LNAV				LNAV/VNAV				LPV				DIST THR / SM005									
STRAIGHT-IN APPROACH	760 (360)																					
CIRCLING	ft AMSL	840	980	NOT AUTHORIZED	NOT AUTHORIZED	ALTITUDE				ft	1700	1420	1100	780	GROUND SPEED		kt	60	90	120	150	180
	VIS. m	1900	2800	NOT AUTHORIZED	NOT AUTHORIZED	FAF - SM005 3.9 NM				min:sec	3:54	2:36	1:57	1:34	1:18	Rate of descent (319 ft/NM)		ft/min	320	480	640	800

AD 2 LHSM INSTRUMENT APPROACH CHART RNP RWY 16

PT	WP ID	Role	OverFly	Bearing/ (Len Dur)	Turn Direction	Altitude (FT)	IAS (KT)	VRT ANG	NAV PERF
IF	SM001	IAF				+4000	-210		RNP APCH
TF	SM002			331.5 T/8.9 NM		+2100	-210		RNP APCH
TF	SM003	IF		075.3 T/5.0 NM		+2100	-185		RNP APCH
TF	SM014	FAF		165.3 T/3.7 NM		+1700			RNP APCH
TF	SM005	MAPt	Y	165.3 T/3.9 NM		+466		-3.0°	RNP APCH
TF	SM006	MATF	Y	165.4 T/9.5 NM		+1800	-210		RNP APCH
DF	SM001				R	+4000	-210		RNP APCH
HM	SM001	MAHF		345.0 T/1 min	L	+4000	-210		RNP APCH

SBAS FAS Data Block Coding Data

FAS-DB (CRC wrapped data)

Operation type	0
SBAS Provider	1
Airport identifier	LHSM
Runway	16
Approach Performance Designator	0
Route indicator	
Reference Path Data Selector	0
Reference Path Identifier	E16B
LTP/FTP Latitude	464150.1430N
LTP/FTP Longitude	0170917.6120E
LTP/FTP Ellipsoidal Height (m)	170.5
FPAP Latitude	464031.8170N
FPAP Longitude	0170947.4020E
Threshold Crossing Height	17.6
TCH Units Selector	1
Glidepath Angle (degrees)	3.00
Course Width (m)	105
Length Offset (m)	0
HAL (m)	40
VAL (m)	35
Data Block	10 0D 13 08 0C 10 00 00 02 36 31 05 7E 50 0A 14 58 B1 5C 07 A9 1A 14 9C FD BC E8 00 60 81 2C 01 64 00 C8 AF 97 61 49 B9
Calculated CRC Value	976149B9

FAS-DB (not CRC wrapped data)

ICAO Code	LH
LTP/FTP Orthometric Height (m)	124.5

WAYPOINT COORDINATES

WP ID	Latitude	Longitude
SM001	N46 40 02.6	E017 05 35.5
SM002	N46 47 50.3	E016 59 26.9
SM003	N46 49 07.0	E017 06 31.1
SM014	N46 45 34.9	E017 07 52.1
SM005	N46 41 50.1	E017 09 17.6
SM006	N46 32 38.9	E017 12 46.8

Holding procedure

Holding fix: SM001
 Left hand holding pattern.
 Maximum speed: 210 KIAS
 Inbound track: 340°
 Outbound track: 160°
 Rate of turn: 3°/sec. or 25° bank angle
 (whichever requires lesser bank)
 Outbound times: 1 min.
 Minimum holding altitude: 4000

**ENTERING THE HOLDING
AT OR ABOVE 2700
IS OBSTACLE FREE**