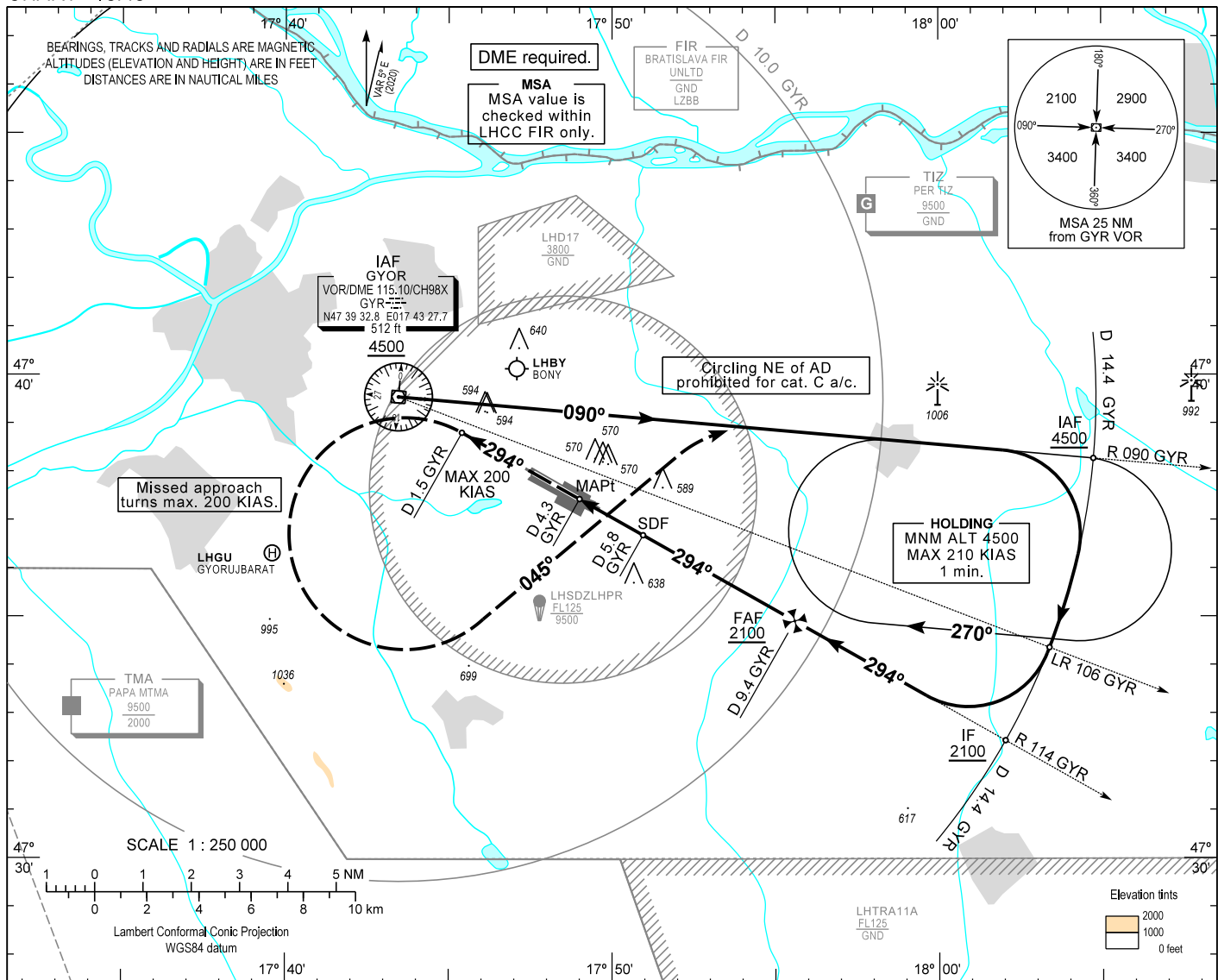


AIP HUNGARY

INSTRUMENT APPROACH CHART - ICAO
AERODROME ELEV 426
HEIGHTS RELATED TO THR RWY 29 - ELEV 426

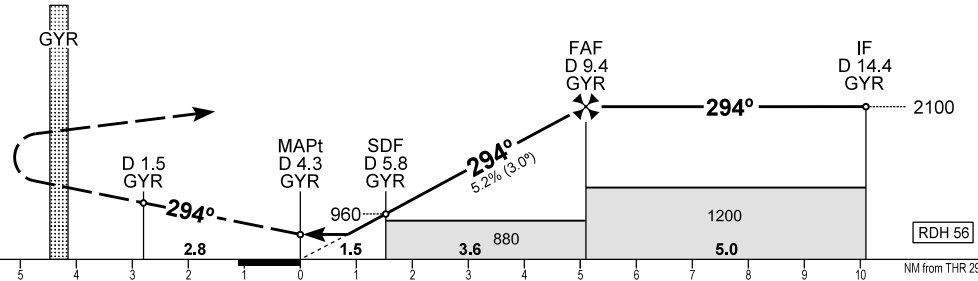
PÉR INFO 129.910
BUDAPEST INFORMATION (WEST) 125.500

GYÖR/PÉR
VOR RWY 29
(ACFT CAT A, B, C)



MISSED APPROACH
Climb 4500.
Proceed initially on R 114 GYR inbound.
When passing D 1.5 GYR on R 114 GYR turn left heading 045° to intercept R 090 GYR.
Maximum turning speed 200 KIAS.
Fly on R 090 GYR and at D 14.4 GYR enter published holding pattern at or above 4500.

TRANSITION ALTITUDE
10000



THR 29 ELEV 426
(THR RWY 29)

OCA (OCH)	A	B	C	CDFA with GYR DME	NM	9.0	8.0	7.0	6.0	
	790 (370)				ft	1980	1660	1340	1020	
STRAIGHT-IN APPROACH	790 (370)			ALT						
CIRCLING APPROACH	ft AMSL	890	940	Timing not authorized to define the MAPt.						
	VIS. m	1900	2800	3700	GROUND SPEED	kt	60	90	120	150
					FAF - MAPt 5.1 NM	min:sec	5:06	3:24	2:33	2:03
					Rate of descent (319 ft/NM)	ft/min	320	480	640	800

CHANGE: minima box, obstacles

AD 2 LHPR INSTRUMENT APPROACH CHART VOR RWY 29

Initial altitude at or above 4500.

Leave GYR VOR on R 090 GYR. At D 14.4 GYR turn right and join CW D 14.4 GYR DME arc.

After crossing R 106 GYR leading radial turn right and intercept R 114 GYR inbound (final track), to D 14.4 GYR (IF) descend 2100.

When crossing D 9.4 GYR (FAF) descend to published minimum altitude.

Holding procedure:

Holding fix: GYR R 090 / D 14.4

Right hand holding pattern.

Maximum speed: 210 KIAS

Inbound track: 090°

Outbound track: 270°

Rate of turn: 3°/sec. or 25° bank angle

(whichever requires lesser bank)

Outbound timing: 1 min.

Minimum holding altitude: 4500

Maximum holding altitude: 8500

Entry: Sector 1 (parallel) and Sector 2 (offset) entries prohibited