

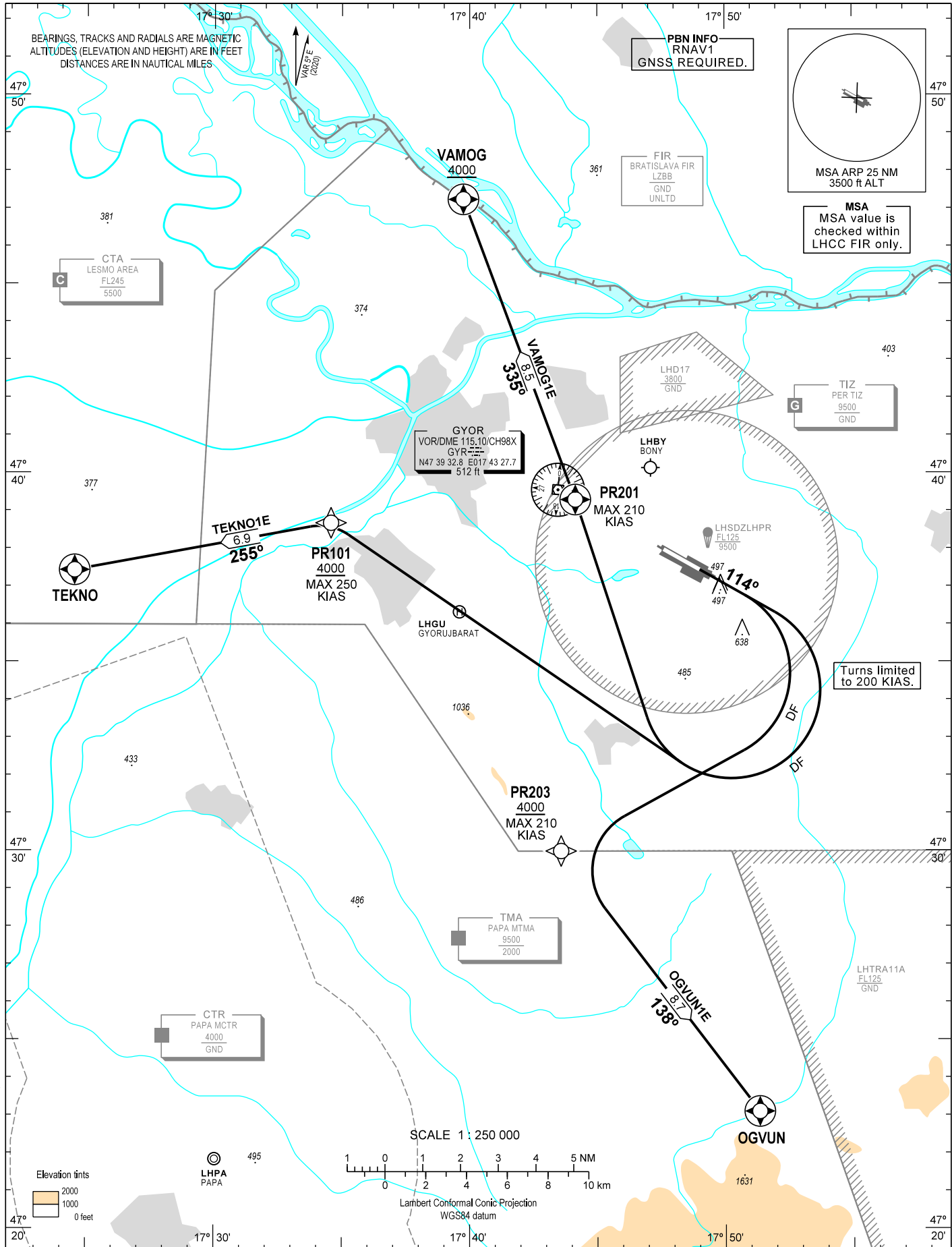
AIP HUNGARY

STANDARD DEPARTURE CHART -  
INSTRUMENT (SID) -  
ICAO

TRANSITION ALTITUDE  
10000

PÉR INFO 129.910  
BUDAPEST INFORMATION (WEST) 125.500

GYÖR/PÉR  
RNAV Rwy 11  
OGVUN1E, TEKN01E, VAMOG1E



CHANGE: new procedures

**AD 2 LHPR STANDARD DEPARTURE CHART INSTRUMENT RWY 11**

SID NAME	PROCEDURE	CLIMBING
<b>VAMOG1E</b> (VAMOG ONE ECHO DEPARTURE)	Climb on course 114°. After passing 900 turn right direct to PR201, maximum turning speed 200 KIAS. To VAMOG at or above 4000, maximum turning speed 210 KIAS.	After departure climb initially 9000. Further climb only by ATC.
<b>TEKNO1E</b> (TEKNO ONE ECHO DEPARTURE)	Climb on course 114°. After passing 900 turn right direct to PR101, at or above 4000, maximum turning speed 200 KIAS. To TEKNO, maximum turning speed 250 KIAS.	
<b>OGVUN1E</b> (OGVUN ONE ECHO DEPARTURE)	Climb on course 114°. After passing 900 turn right direct to PR203, at or above 4000, maximum turning speed 200 KIAS. To OGVUN, maximum turning speed 210 KIAS.	In order to reach TIZ exit altitude min. PDG 5.5% up to 4000. After departure climb initially 9000. Further climb only by ATC.

Recommended navaid: GYR VOR.

**WAYPOINT COORDINATES**

WP ID	Latitude	Longitude
PR201	N47 39 17.3	E017 44 08.3
PR101	N47 38 40.3	E017 34 34.3
PR203	N47 29 59.2	E017 43 34.6
VAMOG	N47 47 14.0	E017 39 45.3
TEKNO	N47 37 25.6	E017 24 32.1
OGVUN	N47 23 06.0	E017 51 20.0