

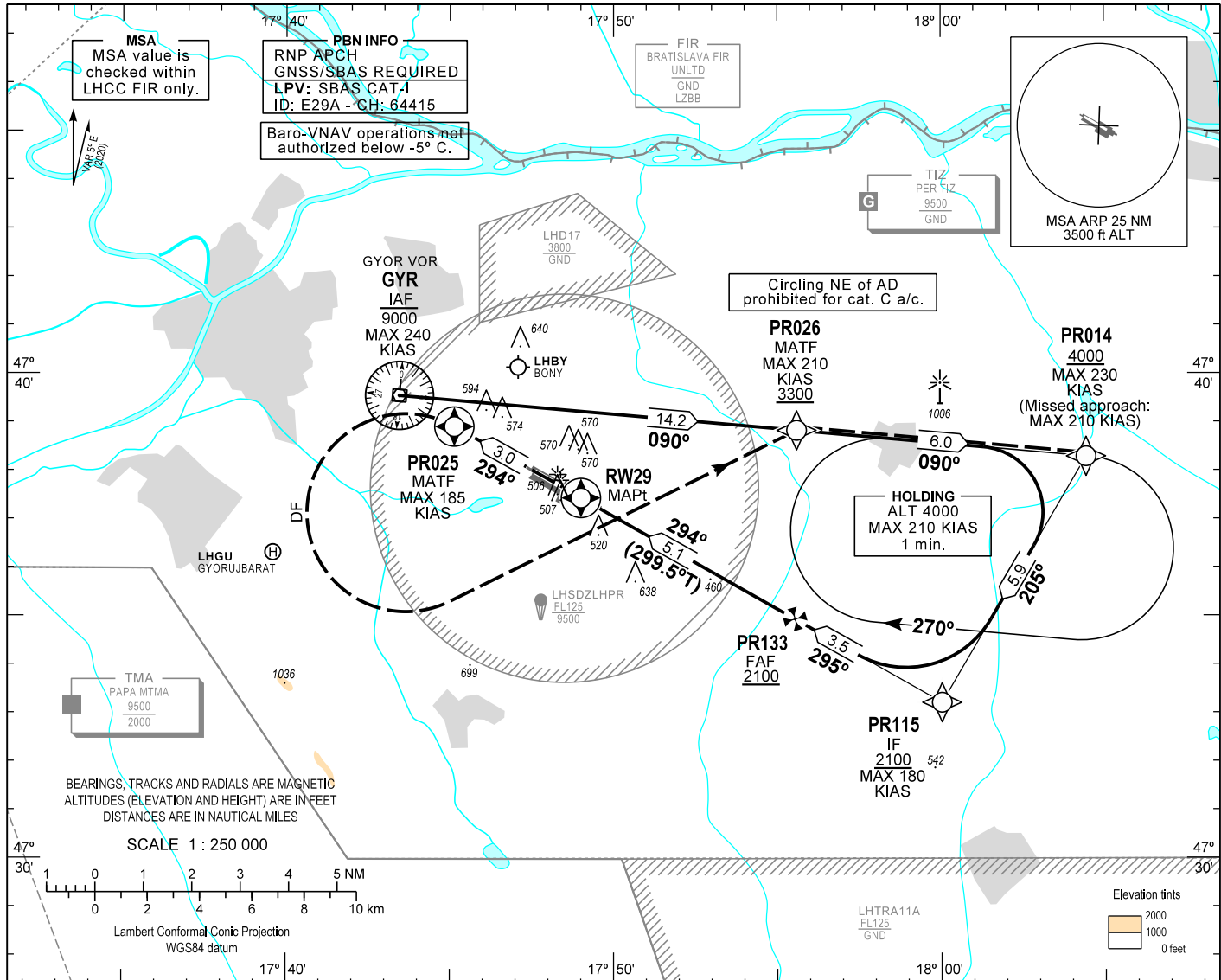
AIP HUNGARY

INSTRUMENT APPROACH CHART - ICAO

AERODROME ELEV 426  
HEIGHTS RELATED TO THR RWY 29 - ELEV 426

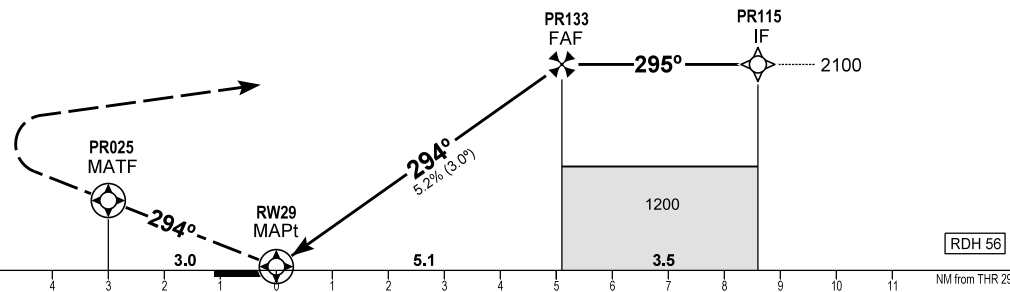
PÉR INFO 129.910  
BUDAPEST INFORMATION (WEST) 125.500

GYÖR/PÉR  
RNP RWY 29  
(ACFT CAT A, B, C)



**MISSED APPROACH**  
Climb to PR025.  
Turn left direct to PR026 at or above 3300.  
Proceed to PR014, and enter holding at or above 4000.  
Maximum turning speed: 185 KIAS at PR025, 210 KIAS at PR026.

TRANSITION ALTITUDE  
10000



THR 29 ELEV 426 (THR RWY 29)		A B C			DIST THR / RWY 29				
OCA (OCH)					NM 5.0 4.0 3.0 2.0 1.0				
STRAIGHT-IN APPROACH	LNAV	790 (370)			ALTITUDE				
	LNAV / VNAV	653 (227)	664 (238)	679 (253)	ft 2070 1760 1440 1120 800				
	LPV	637 (211)	649 (223)	658 (232)	Timing not authorized to define the MAPt.				
CIRCLING APPROACH	ft AMSL	890	940	1180 SW of AD only	GROUND SPEED				
	VIS. m	1900	2800	3700	kt 60 90 120 150				
					FAF - RWY 29 5.1 NM min:sec 5:06 3:24 2:33 2:03				
					Rate of descent (319 ft/NM) ft/min 320 480 640 800				

CHANGE: minima box, obstacles

### AD 2 LHPR INSTRUMENT APPROACH CHART RNP RWY 29

PT	WP ID	Role	OverFly	Bearing/ (Len Dur)	Turn Direction	Altitude (FT)	IAS (KT)	VRT ANG	NAV PERF
IF	GYR	IAF				-9000	-240		RNP APCH
TF	PR014			095.2 T/14.2 NM		+4000	-230		RNP APCH
TF	PR115	IF		210.4 T/5.9 NM		+2100	-180		RNP APCH
TF	PR133	FAF		299.5 T/3.5 NM		+2100			RNP APCH
TF	RW29	MAPt	Y	299.5 T/5.1 NM		+482		-3.0°	RNP APCH
TF	PR025	MATF	Y	299.4 T/3.0 NM			-185		RNP APCH
DF	PR026	MATF			L	+3300	-210		RNP APCH
TF	PR014			095.2 T/6.0 NM	R	+4000	-210		RNP APCH
HM	PR014	MAHF		095.2 T/1 min	R	+4000	-210		RNP APCH

#### SBAS FAS Data Block Coding Data

##### FAS-DB (CRC wrapped data)

Operation type	0
SBAS Provider	1
Airport identifier	LHPR
Runway	29
Approach Performance Designator	0
Route indicator	
Reference Path Data Selector	0
Reference Path Identifier	E29A
LTP/FTP Latitude	473726.0200N
LTP/FTP Longitude	0174900.3000E
LTP/FTP Ellipsoidal Height (m)	174.1
FPAP Latitude	473758.3400N
FPAP Longitude	0174735.6300E
Threshold Crossing Height	17.1
TCH Units Selector	1
Glidepath Angle (degrees)	3.00
Course Width (m)	105
Length Offset (m)	0
HAL (m)	40
VAL (m)	35
Data Block	10 12 10 08 0C 1D 00 00 01 39 32 05 08 1E 70 14 18 68 A5 07 CD 1A 80 FC 00 84 6A FD 56 81 2C 01 64 00 C8 AF 6C 80 8E B4
Calculated CRC Value	6C808EB4
<b>FAS-DB (not CRC wrapped data)</b>	
ICAO Code	LH
LTP/FTP Orthometric Height (m)	129.8

#### WAYPOINT COORDINATES

WP ID	Latitude	Longitude
GYR	N47 39 32.8	E017 43 27.7
PR014	N47 38 17.4	E018 04 25.7
PR115	N47 33 12.7	E018 00 01.4
PR133	N47 34 56.0	E017 55 32.4
RW29	N47 37 26.0	E017 49 00.3
PR025	N47 38 54.3	E017 45 08.2
PR026	N47 38 49.6	E017 55 35.4

#### Holding procedure

Holding fix: PR014  
 Right hand holding pattern.  
 Maximum speed: 210 KIAS  
 Inbound track: 090°  
 Outbound track: 270°  
 Rate of turn: 3°/sec. or 25° bank angle (whichever requires lesser bank)  
 Outbound times: 1 min.  
 Minimum holding altitude: 4000  
 Maximum holding altitude: 8500  
 Entry: Sector 1 (parallel) and Sector 2 (offset) entries prohibited