

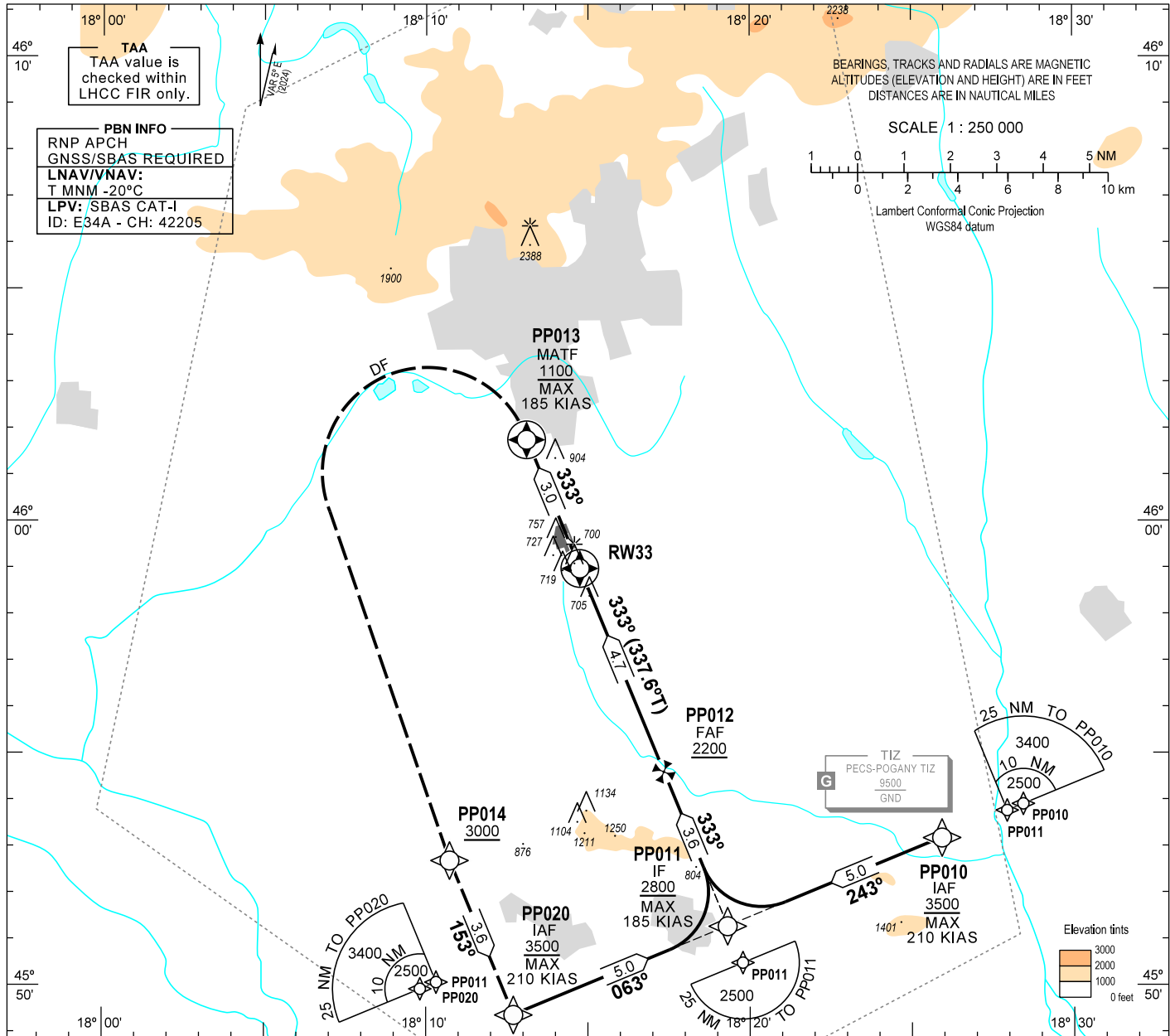
AIP HUNGARY

INSTRUMENT  
APPROACH  
CHART - ICAO

AERODROME ELEV 651  
HEIGHTS RELATED TO  
THR RWY 33 - ELEV 640

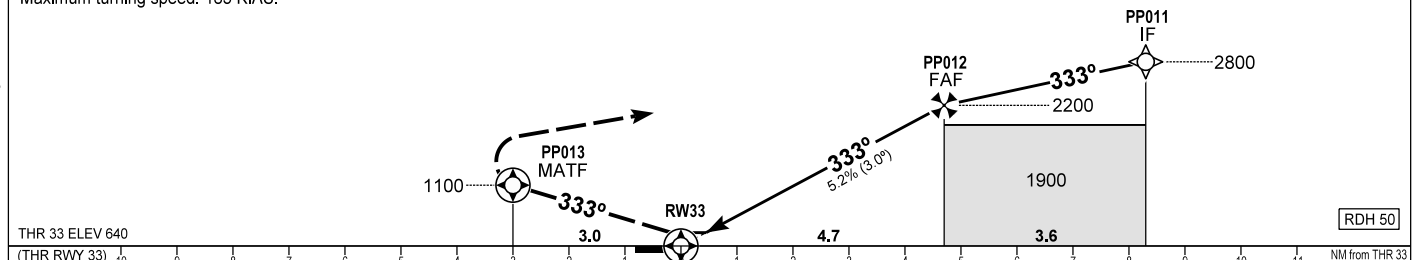
POGÁNY INFO 126.915  
BUDAPEST INFORMATION (WEST) 125.500

PÉCS/POGÁNY  
RNP RWY 33  
(ACFT CAT A, B, C, D)



MISSED APPROACH  
Climb to PP013 at or above 1100.  
Turn left direct to PP014 at or above 3000.  
Proceed to PP020 at or above 3500.  
Maximum turning speed: 185 KIAS.

TRANSITION ALTITUDE  
10000



OCA (OCH)		A	B	C	D	DIST THR / RWY33			NM	4.0	3.0	2.0		
STRAIGHT-IN APPROACH	LNAV	970 (330)				980 (340)	ALTITUDE			ft	1960	1650	1330	
	LNAV/VNAV	866 (226)	878 (238)	985 (345)	1020 (380)	GROUND SPEED			kt	60	90	120	150	180
	LPV	830 (190)	842 (202)	850 (210)	861 (221)	FAF - RW33 4.7 NM			min:sec	4:42	3:08	2:21	1:53	1:34
CIRCLING APPROACH	ft AMSL	1200	1200	1300	1530	Rate of descent (319 ft/NM)			ft/min	320	480	640	800	960
	VIS. m	1900	2800	3700	4600									

CHANGE: magnetic variation, RWY designator, minima, FAS-DB

**AD 2 LHPP INSTRUMENT APPROACH CHART RNP RWY 33**

via PP020

PT	WP ID	Role	OverFly	Bearing/ (Len Dur)	Turn Direction	Altitude (FT)	IAS (KT)	VRT ANG	NAV PERF
IF	PP020	IAF				+3500	-210		RNP APCH
TF	PP011	IF		067.5 T/5.0 NM		+2800	-185		RNP APCH
TF	PP012	FAF		337.6 T/3.6 NM		+2200			RNP APCH
TF	RW33	MAPt	Y	337.6 T/4.7 NM		+690		-3.0°	RNP APCH
TF	PP013	MATF	Y	337.5 T/3.0 NM		+1100	-185		RNP APCH
DF	PP014				L	+3000	-185		RNP APCH
TF	PP020			157.5 T/3.6 NM		+3500	-210		RNP APCH

via PP010

PT	WP ID	Role	OverFly	Bearing/ (Len Dur)	Turn Direction	Altitude (FT)	IAS (KT)	VRT ANG	NAV PERF
IF	PP010	IAF				+3500	-210		RNP APCH
TF	PP011	IF		247.7 T/5.0 NM		+2800	-185		RNP APCH
TF	PP012	FAF		337.6 T/3.6 NM		+2200			RNP APCH
TF	RW33	MAPt	Y	337.6 T/4.7 NM		+690		-3.0°	RNP APCH
TF	PP013	MATF	Y	337.5 T/3.0 NM		+1100	-185		RNP APCH
DF	PP014				L	+3000	-185		RNP APCH
TF	PP020			157.5 T/3.6 NM		+3500	-210		RNP APCH

**SBAS FAS Data Block Coding Data**

**FAS-DB (CRC wrapped data)**

Operation type	0
SBAS Provider	1
Airport identifier	LHPP
Runway	33
Approach Performance Designator	0
Route indicator	
Reference Path Data Selector	0
Reference Path Identifier	E33A
LTP/FTP Latitude	455858.7400N
LTP/FTP Longitude	0181444.9500E
LTP/FTP Ellipsoidal Height (m)	239.8
FPAP Latitude	455949.4700N
FPAP Longitude	0181414.8480E
Threshold Crossing Height	50
TCH Units Selector	0
Glidepath Angle (degrees)	3.00
Course Width (m)	105.00
Length Offset (m)	200
HAL (m)	40.0
VAL (m)	35.0
Data Block	10 10 10 08 0C 21 00 00 01 33 33 05 68 D7 BB 13 AC 8B D4 07 5E 1D 54 8C 01 D4 14 FF F4 01 2C 01 64 19 C8 AF CE 29 61 A6
Calculated CRC Value	CE2961A6
<b>FAS-DB (not CRC wrapped data)</b>	
ICAO Code	LH
LTP/FTP Orthometric Height (m)	195.1

**WAYPOINT COORDINATES**

WP ID	Latitude	Longitude
PP020	N45 49 21.7	E018 12 42.0
PP010	N45 53 10.5	E018 25 55.6
PP011	N45 51 16.3	E018 19 18.6
PP012	N45 54 35.9	E018 17 20.6
RW33	N45 58 58.7	E018 14 45.0
PP013	N46 01 45.0	E018 13 06.2
PP014	N45 52 41.2	E018 10 43.8