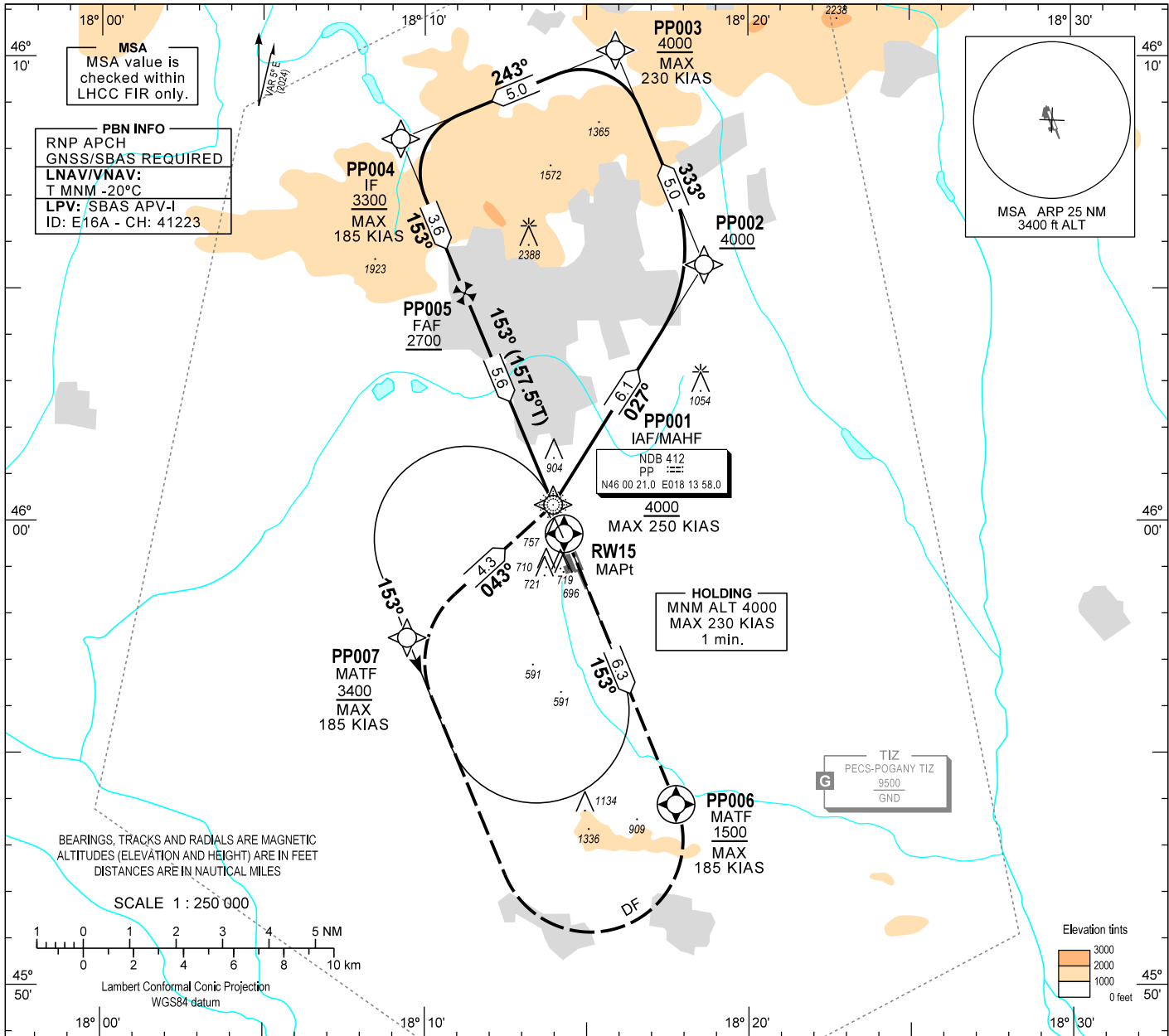


INSTRUMENT APPROACH CHART - ICAO

AERODROME ELEV 651
 HEIGHTS RELATED TO THR RWY 15 - ELEV 650

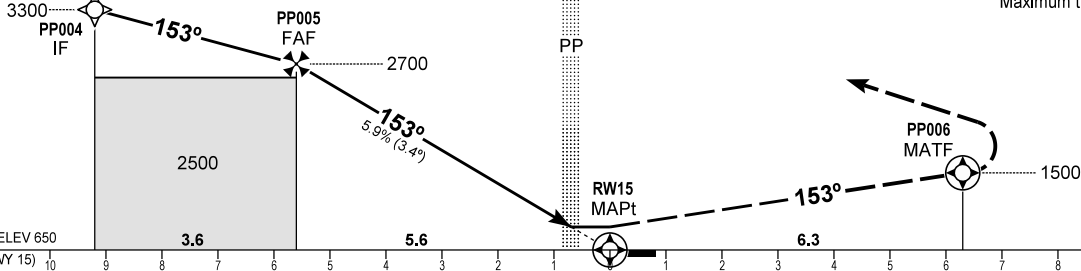
POGÁNY INFO 126.915
 BUDAPEST INFORMATION (WEST) 125.500

PÉCS/POGÁNY RNP RWY 15
 (ACFT CAT A, B, C, D)



TRANSITION ALTITUDE
 10000

MISSED APPROACH
 Climb to PP006 at or above 1500.
 Turn right direct to PP007 at or above 3400.
 Proceed to PP001, and enter holding at 4000.
 Maximum turning speed: 185 KIAS.



CHANGE: magnetic variation, RWY designator, minima, FAS-DB

OCA (OCH)		A	B	C	D	DIST THR / RWY15								
		1150 (500)				NM	5.0	4.0	3.0	2.0				
STRAIGHT-IN APPROACH	LNAV	1150 (500)				ft	2480	2130	1770	1410				
	LNAV/VNAV	1045 (395)	1058 (408)	1067 (417)	1079 (429)									
	LPV	899 (249)	912 (262)	920 (270)	932 (282)									
CIRCLING APPROACH	ft AMSL	1200	1200	1300	1530	GROUND SPEED								
	VIS. m	1900	2800	3700	4600	kt	60	90	120	150	180			
						FAF - RW15 5.6 NM		min:sec		5:36	3:44	2:48	2:14	1:52
						Rate of descent (357 ft/NM)		ft/min		360	540	710	890	1070

AD 2 LHPP INSTRUMENT APPROACH CHART RNP RWY 15

PT	WP ID	Role	OverFly	Bearing/ (Len Dur)	Turn Direction	Altitude (FT)	IAS (KT)	VRT ANG	NAV PERF
IF	PP001	IAF				+4000	-250		RNP APCH
TF	PP002			032.1 T/6.1 NM		+4000			RNP APCH
TF	PP003			337.6 T/5.0 NM		+4000	-230		RNP APCH
TF	PP004	IF		247.6 T/5.0 NM		+3300	-185		RNP APCH
TF	PP005	FAF		157.5 T/3.6 NM		+2700			RNP APCH
TF	RW15	MAPt	Y	157.5 T/5.6 NM		+700		-3.36°	RNP APCH
TF	PP006	MATF	Y	157.5 T/6.3 NM		+1500	-185		RNP APCH
DF	PP007	MATF			R	+3400	-185		RNP APCH
TF	PP001			047.6 T/4.3 NM		@4000			RNP APCH
HM	PP001	MAHF		338.0 T/1 min	L	@4000	-230		RNP APCH

SBAS FAS Data Block Coding Data

FAS-DB (CRC wrapped data)	
Operation type	0
SBAS Provider	1
Airport identifier	LHPP
Runway	15
Approach Performance Designator	0
Route indicator	
Reference Path Data Selector	0
Reference Path Identifier	E15A
LTP/FTP Latitude	455943.6200N
LTP/FTP Longitude	0181418.3200E
LTP/FTP Ellipsoidal Height (m)	242.7
FPAP Latitude	455852.8895N
FPAP Longitude	0181448.4205E
Threshold Crossing Height	50
TCH Units Selector	0
Glidepath Angle (degrees)	3.36
Course Width (m)	105.00
Length Offset (m)	200
HAL (m)	40.0
VAL (m)	50.0
Data Block	10 10 10 08 0C 0F 00 00 01 35 31 05 08 36 BD 13 A0 BB D3 07 7B 1D AB 73 FE 29 EB 00 F4 01 50 01 64 19 C8 FA A4 9D FB F1
Calculated CRC Value	A49DFBF1
FAS-DB (not CRC wrapped data)	
ICAO Code	LH
LTP/FTP Orthometric Height (m)	198.0

WAYPOINT COORDINATES

WP ID	Latitude	Longitude
PP001	N46 00 21.0	E018 13 58.0
PP002	N46 05 31.2	E018 18 38.1
PP003	N46 10 08.4	E018 15 53.5
PP004	N46 08 13.7	E018 09 14.8
PP005	N46 04 54.2	E018 11 13.7
RW15	N45 59 43.6	E018 14 18.3
PP006	N45 53 53.8	E018 17 45.5
PP007	N45 57 29.1	E018 09 27.4

Holding procedure

Holding fix: PP001
 Left hand holding pattern.
 Inbound track: 333°
 Outbound track: 153°
 Rate of turn: 3°/sec. or 25° bank angle
 (whichever requires lesser bank)
 Outbound times: 1 min.
 Minimum holding altitude: 4000