

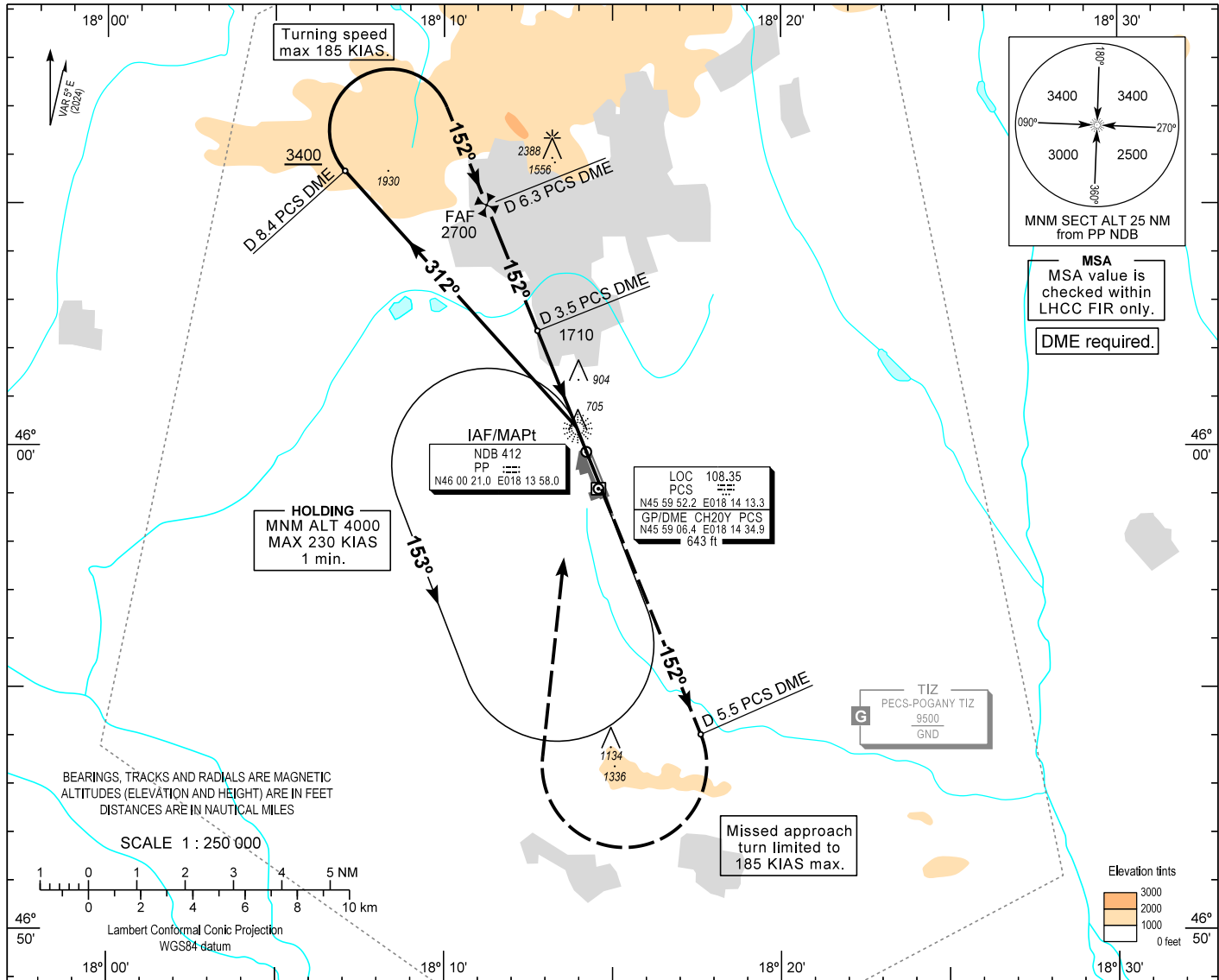
AIP HUNGARY

INSTRUMENT
APPROACH
CHART - ICAO

AERODROME ELEV 651
HEIGHTS RELATED TO
THR RWY 15 - ELEV 650

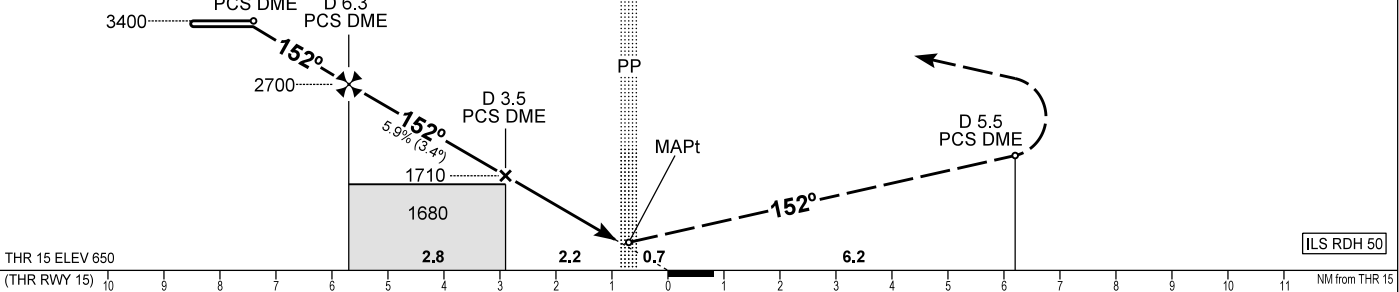
POGÁNY INFO 126.915
BUDAPEST INFORMATION (WEST) 125.500

PÉCS/POGÁNY
NDB RWY 15
(ACFT CAT A, B, C, D)



TRANSITION ALTITUDE 10000

MISSED APPROACH
Climb straight ahead to 4000.
At D 5.5 PCS DME turn right inbound PP NDB.
Missed approach turn limited to 185 KIAS maximum.
Hold at 4000 over PP NDB.



OCA (OCH)	A				B				C				D								
	1150 (500)				1200				1200				1300				1530				
STRAIGHT-IN APPROACH	1150 (500)																				
CIRCLING APPROACH	ft AMSL	1200				1200				1300				1530							
	VIS. m	1900				2800				3700				4600							
Timing not authorized to define the MAPt.																					
GROUND SPEED	kt	60				90				120				150				180			
FAF - MAPt 4.94 NM	min:sec	4:56				3:18				2:28				1:59				1:39			
Rate of descent (357 ft/NM))	ft/min	360				540				710				890				1070			

AD 2 LHPP INSTRUMENT APPROACH CHART NDB RWY 15

Arrivals on 282° - 342° may enter the base turn procedure directly at 4000
above PP NDB according to the advice of POGÁNY INFO.
Other arrivals shall enter the holding procedure.

NDB approach from PP NDB:

Initial altitude: 4000. 185 KIAS max.

Leave PP NDB on QDR 312 PP and descend to 3400.

At D 8.4 PCS DME turn right and intercept QDM 152 PP (final track), descend to 2700.

When crossing D 6.3 PCS DME (FAF), descend to 1710.

When crossing D 3.5 PCS DME, descend to published minimum altitude.

Holding procedure:

Holding fix: PP NDB.

Left hand holding pattern.

Inbound track: 333°

Outbound track: 153°

Rate of turn: 3°/sec. or 25° bank angle
(whichever requires lesser bank)

Outbound timing: 1 min.

Minimum holding altitude: 4000

Final approach descent: 3.36°