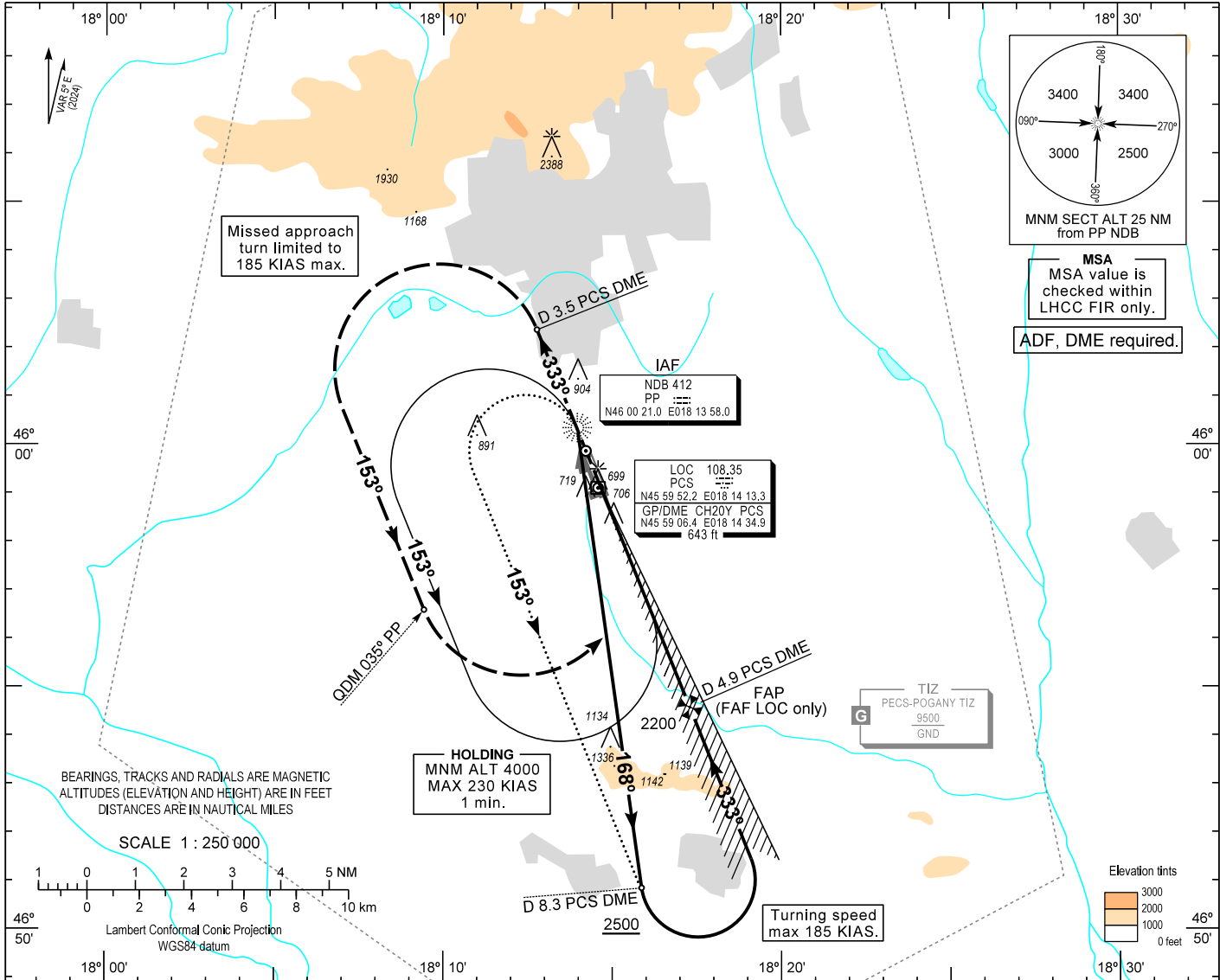


AIP HUNGARY

INSTRUMENT APPROACH CHART - ICAO  
AERODROME ELEV 651  
HEIGHTS RELATED TO THR RWY 33 - ELEV 640

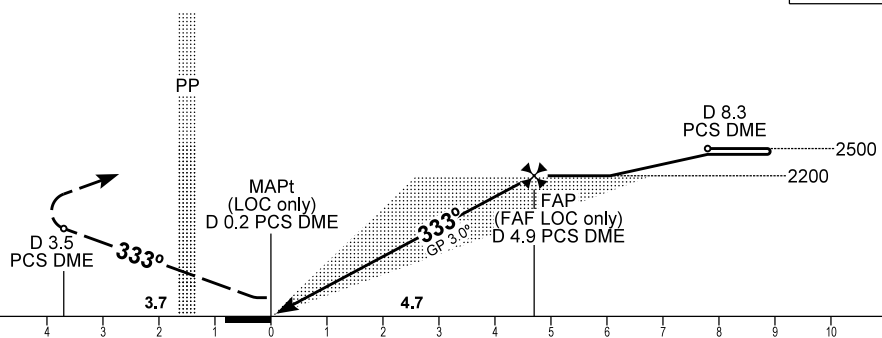
POGÁNY INFO 126.915  
BUDAPEST INFORMATION (WEST) 125.500

PÉCS/POGÁNY  
ILS or LOC RWY 33  
(ACFT CAT A, B, C, D)



MISSED APPROACH  
Climb straight ahead to 4000.  
At D 3.5 PCS DME and turn left to heading 153°.  
Missed approach turn limited to 185 KIAS maximum.  
Climb further on heading 153° and  
at QDM 035° PP NDB turn left inbound PP NDB.  
Hold at 4000 over PP NDB.

TRANSITION ALTITUDE  
10000



OCA (OCH)		A	B	C	D	DME PCS					
STRAIGHT-IN APPROACH	Cat. I	830 (190)	842 (202)	850 (210)	861 (221)	NM	4.0	3.0	2.0	1.0	
	LOC	960 (320)				NM	3.8	2.8	1.8	0.8	
CIRCLING APPROACH	ft AMSL	1200	1200	1300	1530	ALTITUDE					
	VIS. m	1900	2800	3700	4600	ft	1910	1590	1280	960	
Timing not authorized to define the MAPt.											
GROUND SPEED						kt	60	90	120	150	180
FAF - MAPt 4.74 NM						min:sec	4:44	3:10	2:22	1:54	1:35
Rate of descent (319 ft/NM)						ft / min	320	480	640	800	960

CHANGE: magnetic variation, RWY designator, minima

## AD 2 LHPP INSTRUMENT APPROACH CHART ILS OR LOC RWY 33

Arrivals on 138° - 198° may enter the base turn procedure directly at 4000  
above PP NDB according to the advice of POGÁNY INFO.  
Other arrivals shall enter the holding procedure.

### ILS approach from PP NDB:

Initial altitude: 4000. 185 KIAS max.

Leave PP NDB on QDR 168 and descend to 2500.

At D 8.3 PCS DME turn left to intercept PCS LOC 333° and descend to 2200, then follow ILS.

### ILS approach from PP NDB holding:

Initial altitude: 4000. 185 KIAS max.

At PP NDB turn left to heading 153° and descend to 2500.

Fly outbound and at D 8.3 PCS DME turn left to intercept PCS LOC 333° and descend to 2200, then follow ILS.

### Holding procedure:

Holding fix: PP NDB.

Left hand holding pattern.

Inbound track: 333°

Outbound track: 153°

Rate of turn: 3°/sec. or 25° bank angle

(whichever requires lesser bank)

Outbound timing: 1 min.

Minimum holding altitude: 4000

Final approach descent (LOC only): 3.00°