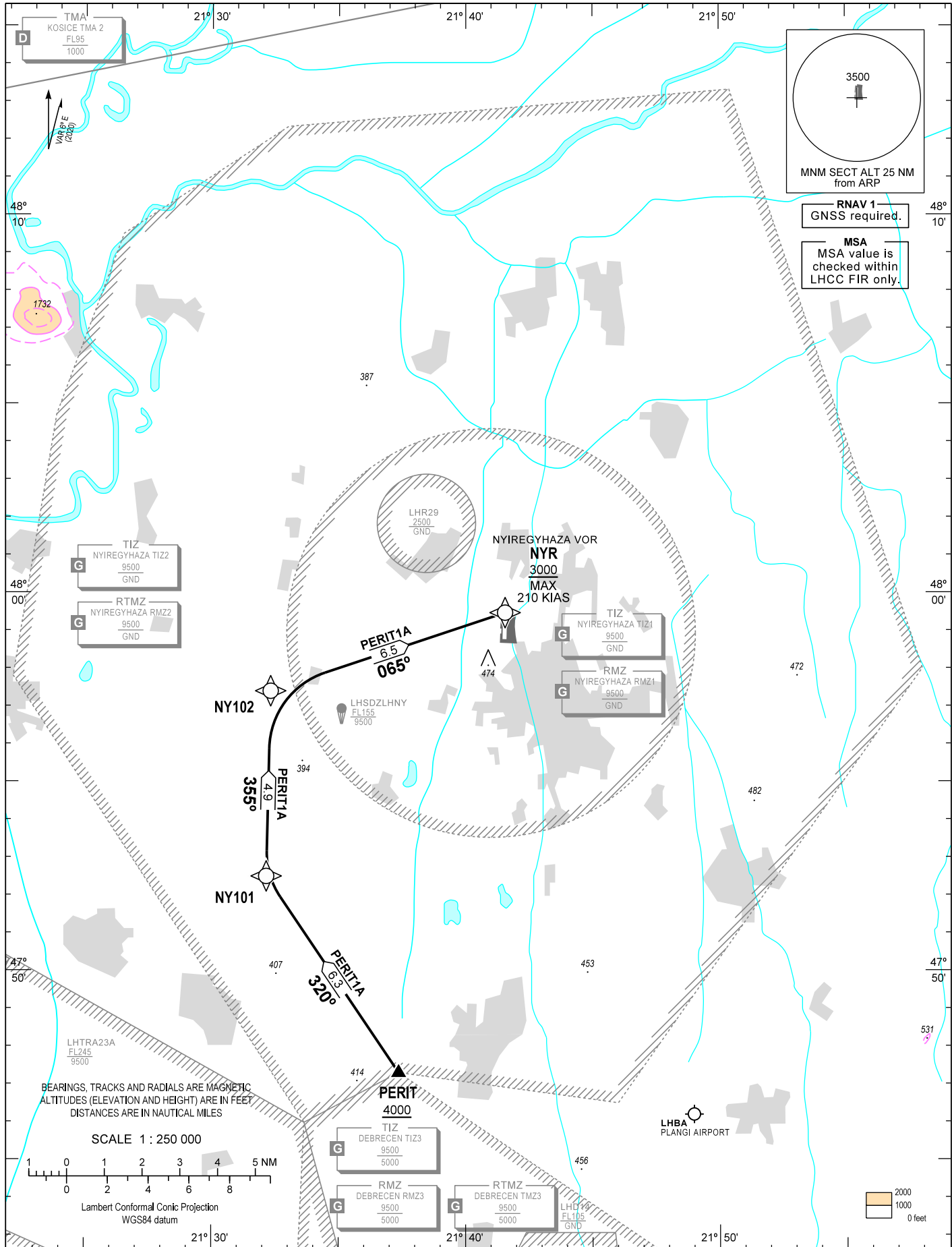


STANDARD ARRIVAL CHART -
INSTRUMENT (STAR) -
ICAO

TRANSITION ALTITUDE
10000

NYIREGYHÁZA INFO 119.410
BUDAPEST INFORMATION (EAST) 133.000

NYIREGYHÁZA
RNAV RWY 18 / 36
PERIT1A



CHANGE: DEBRECEN CTA2 deleted

AD 2 LHNY STANDARD ARRIVAL CHART INSTRUMENT RWY 18 / 36

STAR NAME	PROCEDURE
PERIT1A (PERIT ONE ALPHA ARRIVAL)	From PERIT at or above 4000. To NY101, to NY102, to NYR at or above 3000, maximum speed 210 KIAS.

WAYPOINT COORDINATES

WP ID	Latitude	Longitude
PERIT	N47 47 18.0	E021 37 22.0
NY101	N47 52 30.0	E021 32 09.0
NY102	N47 57 24.0	E021 32 19.0
NYR	N47 59 28.3	E021 41 33.2