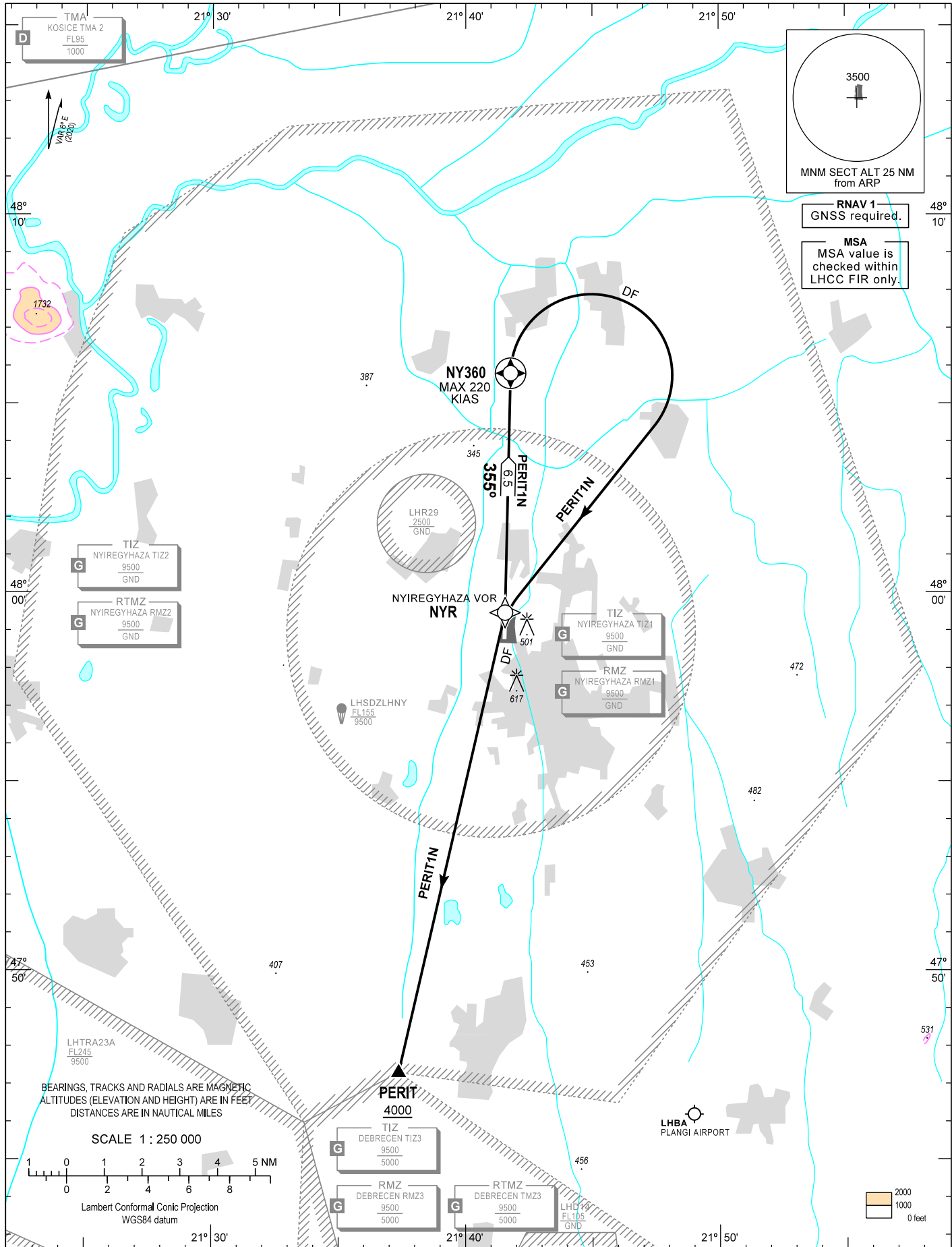


STANDARD DEPARTURE CHART -
INSTRUMENT (SID) -
ICAO

TRANSITION ALTITUDE
10000

NYIREGYHÁZA INFO 119.410
BUDAPEST INFORMATION (EAST) 133.000

NYIREGYHÁZA
RNAV RWY 36
PERIT1N



AD 2 LHNY STANDARD DEPARTURE CHART INSTRUMENT RWY 36

SID NAME	PROCEDURE
PERIT1N (PERIT ONE NOVEMBER DEPARTURE)	To NY360 climb on course 355°, max 220 KIAS. Turn right direct to NYR, direct to PERIT, cross PERIT at or above 4000.

WAYPOINT COORDINATES

WP ID	Latitude	Longitude
NY360	N48 05 48.3	E021 41 46.3
NYR	N47 59 28.3	E021 41 33.2
PERIT	N47 47 18.0	E021 37 22.0

CLOSE-IN OBSTACLES

Name	Latitude	Longitude	Type	Elevation (at top) (FT)	Height (M)
LHNY_AREA2_L_011_001	N47 59 41.16	E021 41 37.94	TREE	417	23,24
LHNY_AREA2_L_011_002	N47 59 39.95	E021 41 38.24	TREE	413	22,23
LHNY_AREA2_P_059	N47 59 56.91	E021 41 17.54	TREE	451	31,77