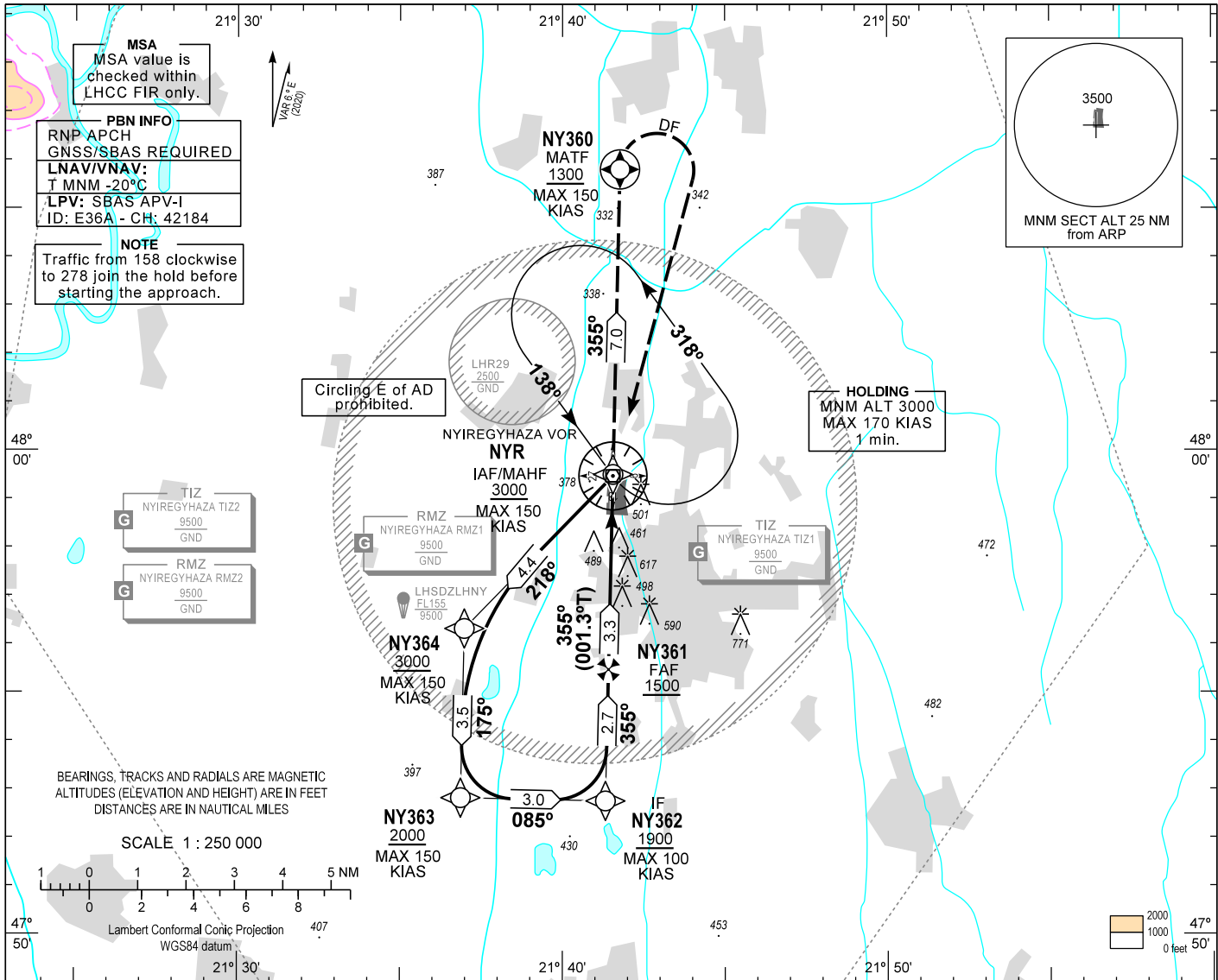


AIP HUNGARY

INSTRUMENT APPROACH CHART - ICAO
AERODROME ELEV 338
HEIGHTS RELATED TO THR RWY 36 - ELEV 338

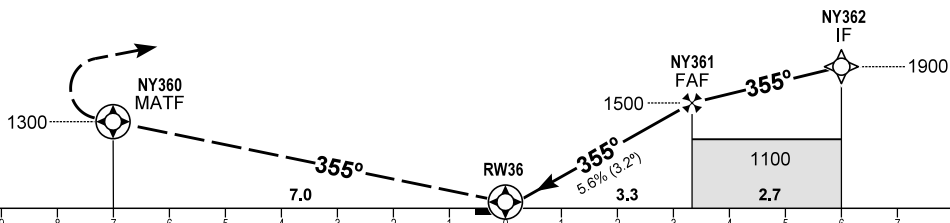
NYIREGYHÁZA INFO 119.410
BUDAPEST INFORMATION (EAST) 133.000

NYIREGYHÁZA
RNP Z RWY 36
(ACFT CAT A)



MISSED APPROACH
Climb to NY360 at or above 1300.
Turn right direct to NYR and holding at or above 3000.
Maximum turning speed: 150 KIAS.

TRANSITION ALTITUDE 10000



CHANGE: new minima	OCA (OCH)	A	DIST THR / RW36	NM	3.0	2.0	1.0	
	STRAIGHT-IN APPROACH	LNAV	880 (550)	ALTITUDE	ft	1400	1060	720
		LNAV/VNAV	758 (420)	GROUND SPEED	kt	60	80	100
		LPV	604 (266)		FAF - RW36 3.3 NM	min:sec	3:18	2:29
CIRCLING APPROACH W of AD only	ft AMSL	800	Rate of descent (340 ft/NM)	ft/min	340	450	570	
	VIS. m	1900						

AD 2 LHNY INSTRUMENT APPROACH CHART RNP Z RWY 36

PT	WP ID	Role	OverFly	Bearing/ (Len Dur)	Turn Direction	Altitude (FT)	IAS (KT)	VRT ANG	NAV PERF
IF	NYR	IAF				+3000	-150		RNP APCH
TF	NY364			224.2 T/4.4 NM		+3000	-150		RNP APCH
TF	NY363			181.3 T/3.5 NM		+2000	-150		RNP APCH
TF	NY362	IF		091.3 T/3.0 NM		+1900	-100		RNP APCH
TF	NY361	FAF		001.3 T/2.7 NM		+1500			RNP APCH
TF	RW36	LTP	Y	001.3 T/3.3 NM		+378		-3.2°	RNP APCH
TF	NY360	MATF	Y	001.3 T/7.0 NM		+1300	-150		RNP APCH
DF	NYR				R	+3000	-150		RNP APCH
HM	NYR	MAHF		144.0 T/1 min	L	+3000	-170		RNP APCH

SBAS FAS Data Block Coding Data

FAS-DB (CRC wrapped data)

Operation type	0
SBAS Provider	1
Airport identifier	LHNY
Runway	36
Approach Performance Designator	0
Route indicator	Z
Reference Path Data Selector	0
Reference Path Identifier	E36A
LTP/FTP Latitude	475846.2200N
LTP/FTP Longitude	0214131.7700E
LTP/FTP Ellipsoidal Height (m)	143.3
FPAP Latitude	475941.0845N
FPAP Longitude	0214133.6480E
Threshold Crossing Height	40
TCH Units Selector	0
Glidepath Angle (degrees)	3.20
Course Width (m)	105.00
Length Offset (m)	696
HAL (m)	40.0
VAL (m)	50.0
Data Block	10 19 0E 08 0C 24 D0 00 01 36 33 05 98 2F 97 14 F4 2B 4F 09 99 19 A1 AC 01 AC 0E 00 90 01 40 01 64 57 C8 FA B8 22 C3 26
Calculated CRC Value	B822C326
FAS-DB (not CRC wrapped data)	
ICAO Code	LH
LTP/FTP Orthometric Height (m)	103.0

WAYPOINT COORDINATES

WP ID	Latitude	Longitude
NYR	N47 59 28.3	E021 41 33.2
NY364	N47 56 19.0	E021 36 59.0
NY363	N47 52 49.2	E021 36 52.1
NY362	N47 52 45.2	E021 41 19.4
NY361	N47 55 28.2	E021 41 25.0
RW36	N47 58 46.2	E021 41 31.8
NY360	N48 05 48.3	E021 41 46.3

Holding procedure

Holding fix: NYR
 Left hand holding pattern.
 Maximum speed: 170 KIAS
 Inbound track: 138°
 Outbound track: 318°
 Rate of turn: 3°/sec. or 25° bank angle (whichever requires lesser bank)
 Outbound times: 1 min.
 Minimum holding altitude: 3000