

AIP HUNGARY

STANDARD ARRIVAL CHART - INSTRUMENT (STAR) - ICAO

TRANSITION ALTITUDE 10000

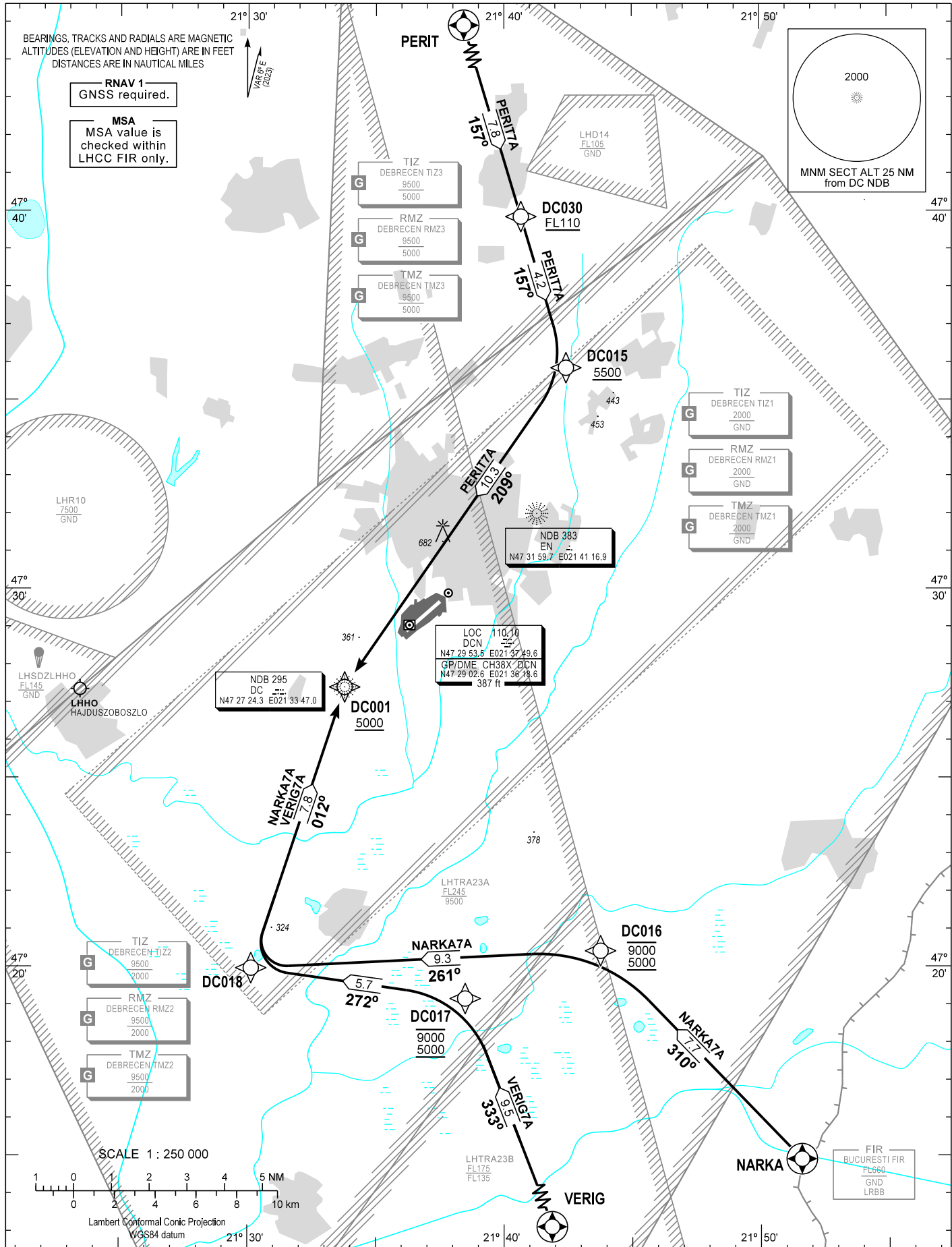
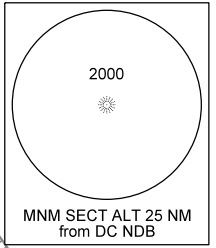
DEBRECEN INFO 125.910
BUDAPEST INFORMATION (EAST) 133.000

DEBRECEN
RNAV RWY 04R / 22L
NARKA7A, PERIT7A, VERIG7A

BEARINGS, TRACKS AND RADIALS ARE MAGNETIC
ALTITUDES (ELEVATION AND HEIGHT) ARE IN FEET
DISTANCES ARE IN NAUTICAL MILES

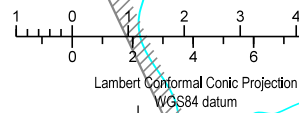
RNAV 1
GNSS required.

MSA
MSA value is checked within LHCC FIR only.



CHANGE: DEBRECEN CTR, DEBRECEN CTA1, DEBRECEN CTA2 deleted, air traffic service TWR withdrawn

SCALE 1 : 250 000



AD 2 LHDC STANDARD ARRIVAL CHART INSTRUMENT RWY 04R / 22L

NAME	PROCEDURE	RESTRICTIONS	DESCENT	R/T FAILURE
PERIT7A	To DC030 at or above FL110. To DC015 at or above 5500. To DC001 at or above 5000.	Max 250 KIAS	When passing a fix, facility or waypoint, descent have to be initiated without delay to the lowest authorized level (depicted on the chart or by ATC) of the following segment.	If an arriving controlled aircraft experiencing R/T failure, it shall follow the STAR to 5000, fly a standard entry into the DC holding and 1 more holding pattern, after which a basic instrument approach procedure shall be initiated according to the known wind direction.
NARKA7A	To DC016 between 5000 and 9000. To DC018, to DC001 at or above 5000.			
VERIG7A	To DC017 between 5000 and 9000. To DC018, to DC001 at or above 5000.			

WAYPOINT COORDINATES

WP ID	Latitude	Longitude
NARKA	N47 14 54.5	E021 51 35.8
PERIT	N47 47 18.0	E021 37 22.0
VERIG	N47 10 20.0	E021 43 29.0
DC001	N47 27 24.2	E021 33 46.9
DC015	N47 35 51.1	E021 42 25.6
DC016	N47 20 25.3	E021 43 45.6
DC017	N47 19 09.5	E021 38 29.2
DC018	N47 19 58.2	E021 30 08.1
DC030	N47 39 51.1	E021 40 39.8