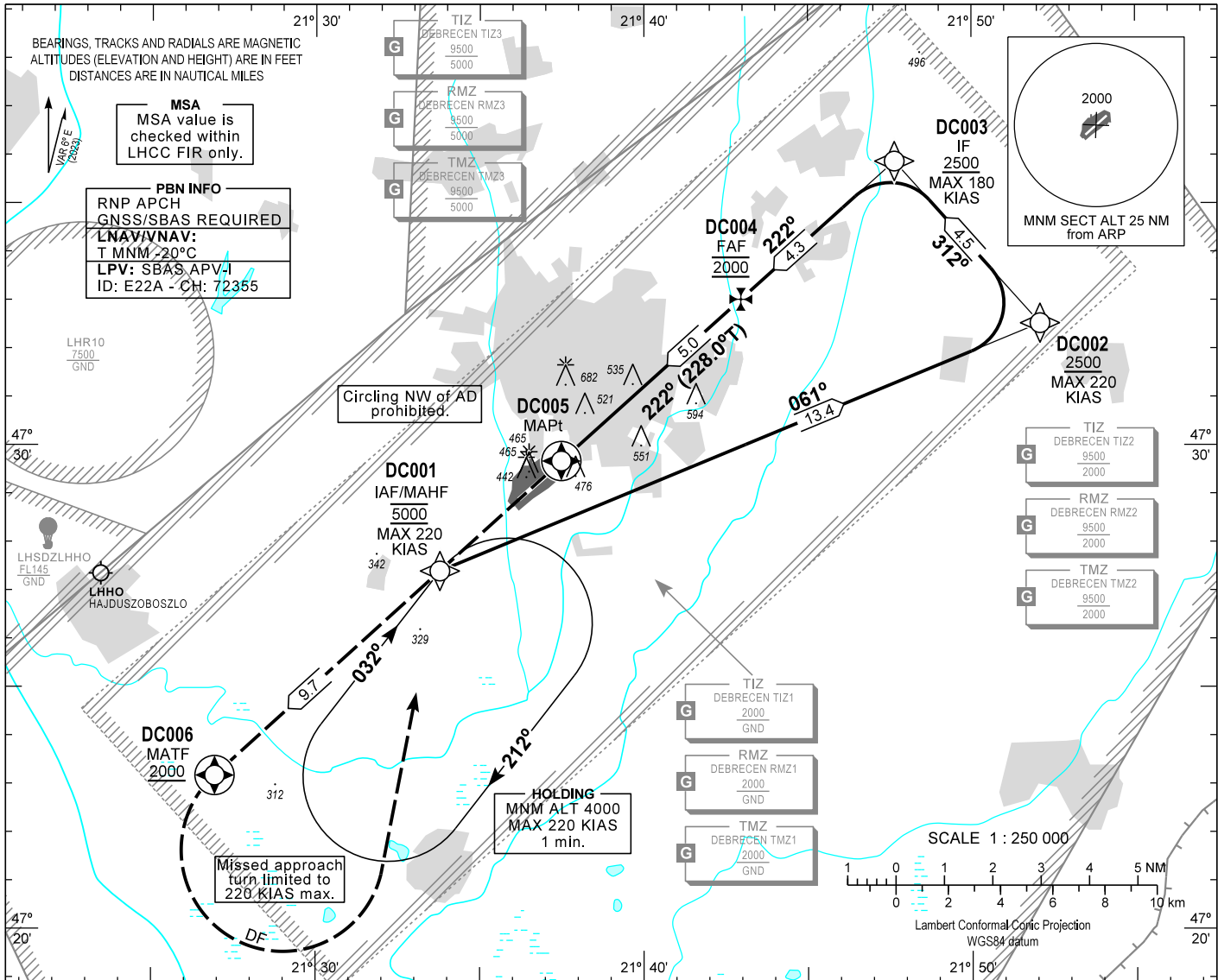


AIP HUNGARY

INSTRUMENT APPROACH CHART - ICAO
AERODROME ELEV 361
HEIGHTS RELATED TO THR RWY 22L - ELEV 360

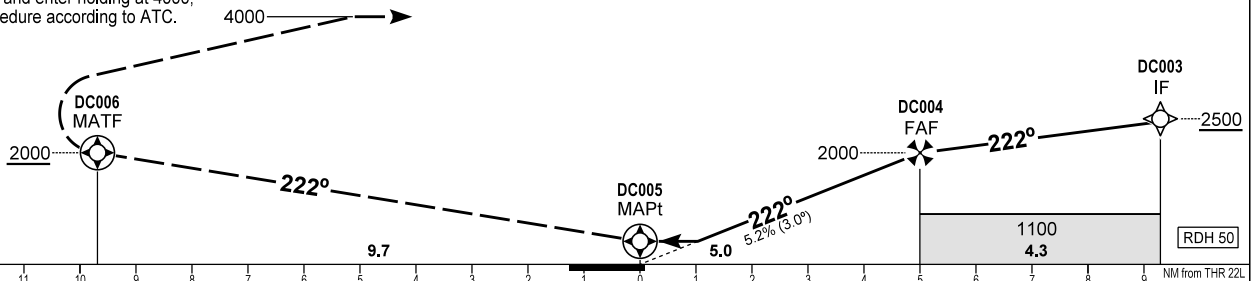
DEBRECEN INFO 125.910
BUDAPEST INFORMATION (EAST) 133.000

DEBRECEN RNP RWY 22L
(ACFT CAT A, B, C, D)



MISSED APPROACH
Climb straight ahead to 4000.
Reach 2000 by DC006
and turn left direct DC001.
Missed approach turn limited to 220 KIAS maximum.
Proceed to DC001, and enter holding at 4000,
or follow basic procedure according to ATC.

TRANSITION ALTITUDE
10000



OCA (OCH)		A	B	C	D	DIST THR / RWY 22L						
		790 (430)				NM	5.0	4.0	3.0	2.0		
STRAIGHT-IN APPROACH	LNAV	790 (430)				ALTITUDE						
	LNAV/VNAV	651 (291)	663 (303)	671 (311)	682 (322)	ft	2000	1680	1360	1050		
	LPV	595 (235)	607 (247)	615 (255)	626 (266)	Timing not authorized to define the MAPt.						
CIRCLING APPROACH SE of AD only	ft AMSL	850	860	990	1050	GROUND SPEED						
	VIS. m	1900	2800	3700	4600	kt	60	90	120	150	180	
							FAF - DC005 5.0 NM		min:sec			
						Rate of descent (318.4 ft/NM)		ft/min				
								5:00	3:20	2:30	2:00	1:40
								320	480	640	800	960

CHANGE: DEBRECEN CTR; DEBRECEN CTA1; DEBRECEN CTA2 deleted; air traffic service TWR withdrawn

AD 2 LHDC INSTRUMENT APPROACH CHART RNP RWY 22L

Only aircraft, equipment and aircrew **approved by the State of the Operator** to carry out GNSS approaches, may use the procedure.

PT	WP ID	Role	OverFly	Bearing/ (Len Dur)	Turn Direction	Altitude (FT)	IAS (KT)	VRT ANG	NAV PERF
IF	DC001	IAF				@5000	-220		RNP APCH
TF	DC002			067.4 T/13.4 NM		+2500	-220		RNP APCH
TF	DC003	IF		318.1 T/4.5 NM		+2500	-180		RNP APCH
TF	DC004	FAF		228.0 T/4.3 NM		@2000			RNP APCH
TF	DC005	MAPt	Y	228.0 T/5.0 NM		+409		-3.0°	RNP APCH
TF	DC006	MATF	Y	227.8 T/9.7 NM		+2000	-220		RNP APCH
DF	DC001				L	@4000	-220		RNP APCH
HM	DC001	MAHF		038.0 T/1 min	R	@4000	-220		RNP APCH

SBAS FAS Data Block Coding Data

FAS-DB (CRC wrapped data)

Operation type	0
SBAS Provider	1
Airport identifier	LHDC
Runway	22L
Approach Performance Designator	0
Route indicator	
Reference Path Data Selector	0
Reference Path Identifier	E22A
LTP/FTP Latitude	472940.7420N
LTP/FTP Longitude	0213728.8520E
LTP/FTP Ellipsoidal Height (m)	150.8
FPAP Latitude	472852.9925N
FPAP Longitude	0213610.7885E
Threshold Crossing Height	15
TCH Units Selector	1
Glidepath Angle (degrees)	3.00
Course Width (m)	105.00
Length Offset (m)	0
HAL (m)	40.0
VAL (m)	50.0
Data Block	10 03 04 08 0C D6 00 00 01 32 32 05 0C EB 61 14 28 C2 47 09 E4 19 F5 8A FE 21 9E FD 2C 81 2C 01 64 00 C8 FA E3 55 64 04
Calculated CRC Value	E3556404

FAS-DB (not CRC wrapped data)

ICAO Code	LH
LTP/FTP Orthometric Height (m)	109.8
FPAP Orthometric Height (m)	109.8

WAYPOINT COORDINATES

WP ID	Latitude	Longitude
DC001	N47 27 24.2	E021 33 46.9
DC002	N47 32 31.6	E021 52 05.1
DC003	N47 35 52.5	E021 47 38.8
DC004	N47 33 01.3	E021 42 57.5
DC005	N47 29 40.7	E021 37 28.9
DC006	N47 23 10.7	E021 26 55.8

Holding procedure

Holding fix: DC001
 Right hand holding pattern.
 Maximum speed: 220 KIAS
 Inbound track: 032°
 Outbound track: 212°
 Rate of turn: 3°/sec. or 25° bank angle
 (whichever requires lesser bank)
 Outbound times: 1 min.
 Minimum holding altitude: 5000
 4000 for Missed Approach

Final approach descent: 3.00°