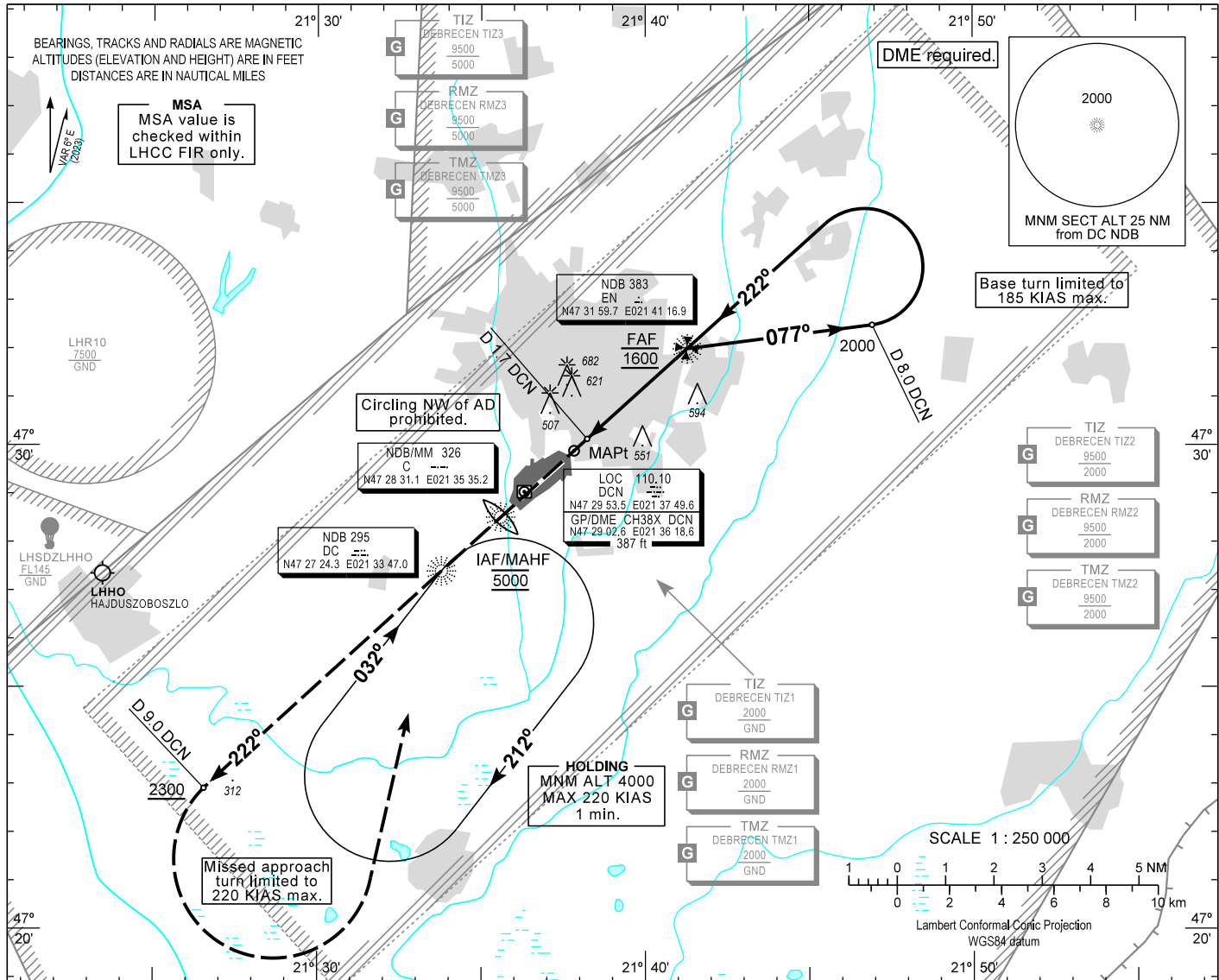


AIP HUNGARY

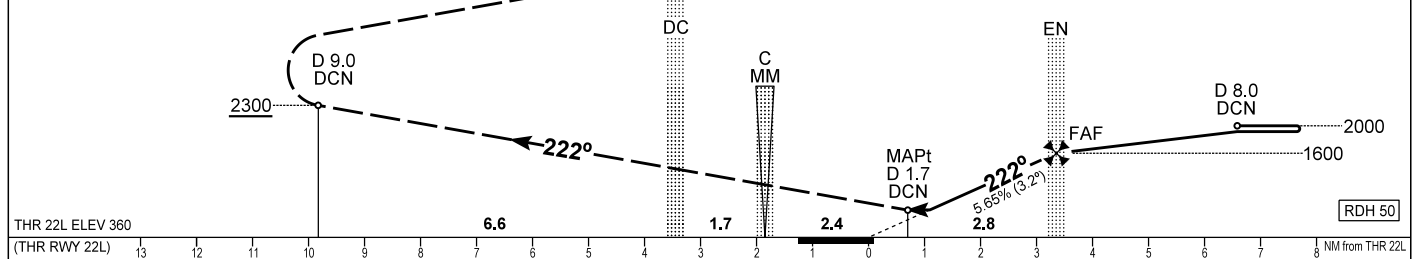
INSTRUMENT APPROACH CHART - ICAO
AERODROME ELEV 361
HEIGHTS RELATED TO THR RWY 22L - ELEV 360

DEBRECEN INFO 125.910
BUDAPEST INFORMATION (EAST) 133.000

DEBRECEN NDB RWY 22L
(ACFT CAT A, B, C, D)



MISSED APPROACH
Climb straight ahead to 4000.
Reach at least 2300 by D 9.0 DCN DME and turn left inbound DC NDB.
Missed approach turn limited to 220 KIAS maximum.
Proceed to DC NDB, and enter holding at 4000, or follow basic procedure according to ATC.



OCA (OCH)	A	B	C	D	DME DCN	NM	4.0	3.0			
	860 (500)					DIST THR / RWY 22L	NM	2.8	1.8		
STRAIGHT-IN APPROACH	860 (500)				ALTITUDE	ft					
						1380 1030					
CIRCLING APPROACH SE of AD only	ft AMSL	850	860	990	Timing not authorized to define the MAPt.						
	VIS. m	1900	2800	3700	GROUND SPEED	kt	60	90	120	150	180
					FAF - MAPt 2.95 NM	min:sec	2:57	1:58	1:28	1:11	0:59

CHANGE: DEBRECEN CTR; DEBRECEN CTA1; DEBRECEN CTA2 deleted; air traffic service TWR withdrawn

AD 2 LHDC INSTRUMENT APPROACH CHART NDB RWY 22L

NDB approach from DC NDB:

Initial altitude: 5000.
Proceed to EN NDB and descend to 2800 .
At EN NDB turn right to 077° and descend to 2000 .
Fly outbound to D 8.0 DCN DME and turn left to track 222° inbound EN NDB (185 KIAS max.).
Proceed to EN NDB and descend to 1600.
At EN NDB descend to 860 on track 222°.

Holding procedure:

Holding fix: DC NDB.
Right hand holding pattern.
Maximum speed: 220 KIAS
Inbound track: 032°
Outbound track: 212°
Rate of turn: 3°/sec. or 25° bank angle
(whichever requires lesser bank)
Outbound timing: 1 min.
Minimum holding altitude: 5000
4000 for Missed Approach

Final approach descent: 3.23°