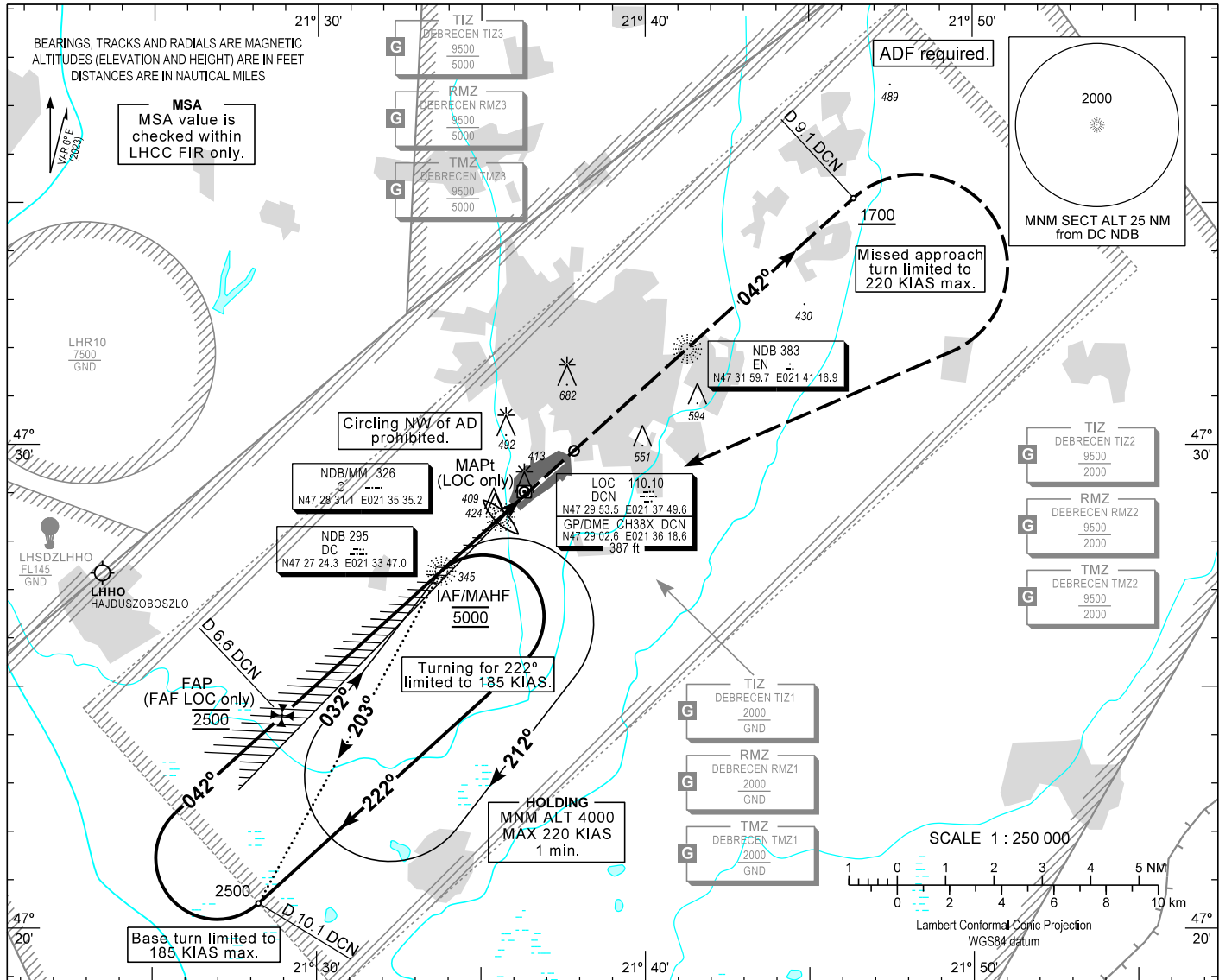


AIP HUNGARY

INSTRUMENT APPROACH CHART - ICAO  
AERODROME ELEV 361  
HEIGHTS RELATED TO THR RWY 04R - ELEV 355

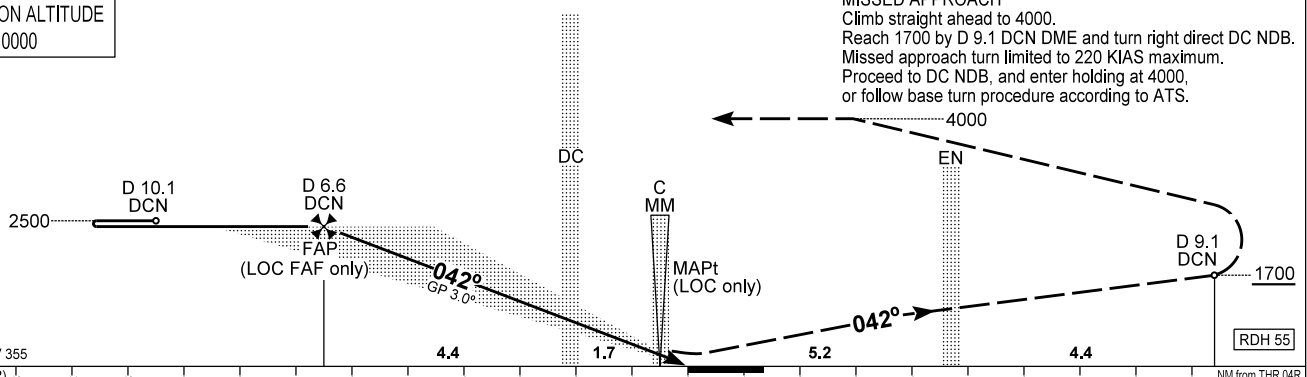
DEBRECEN INFO 125.910  
BUDAPEST INFORMATION (EAST) 133.000

DEBRECEN  
ILS or LOC RWY 04R  
(ACFT CAT A, B, C, D)



TRANSITION ALTITUDE  
10000

MISSED APPROACH  
Climb straight ahead to 4000.  
Reach 1700 by D 9.1 DCN DME and turn right direct DC NDB.  
Missed approach turn limited to 220 KIAS maximum.  
Proceed to DC NDB, and enter holding at 4000,  
or follow base turn procedure according to ATS.



OCA (OCH)		A	B	C	D
STRAIGHT-IN APPROACH	Cat. I	544 (189)	555 (200)	564 (209)	574 (219)
	LOC only	670 (320)			
CIRCLING APPROACH SE of AD only	ft AMSL	850	860	990	1050
	VIS. m	1900	2800	3700	4600

DME DCN / THR RWY 04R	NM	6.0	5.0	4.0	3.0	2.0	1.0
ALTITUDE	ft	2310	1990	1670	1360	1040	730
Timing not authorized to define the MAPt.							
GROUND SPEED	kt	80	100	120	140	160	180
FAP/FAF - RWY04R (6.6 NM)	min:sec	4:56	3:57	3:17	2:49	2:28	2:12
Rate of descent (326 ft/NM)	ft/min	430	540	650	760	870	980

## AD 2 LHDC INSTRUMENT APPROACH CHART ILS OR LOC RWY 04R

### ILS approach from DC NDB (Holding):

Initial altitude: 5000.

When crossing DC NDB holding fix turn right to heading 222° (185 KIAS max.) and descend to 2500.

Fly outbound and after 2.5 min. or at D 10.1 DCN DME, whichever is earlier turn right (185 KIAS max.) to intercept DCN LOC 042°.

Glide path interception at D 6.6 DCN DME (descent fix), then follow ILS.

### Base turn ILS approach from DC NDB:

Available at ATC discretion only.

When crossing DC NDB fly outbound on track 203° (QDR 203°) and descend to 2500.

At D 10.1 DCN DME turn right (185 KIAS max.) to intercept DCN LOC 042°, then follow ILS.

### Holding procedure:

Holding fix: DC NDB.

Right hand holding pattern.

Maximum speed: 220 KIAS

Inbound track: 032°

Outbound track: 212°

Rate of turn: 3°/sec. or 25° bank angle  
(whichever requires lesser bank)

Outbound timing: 1 min.

Minimum holding altitude: 5000

4000 for Missed Approach