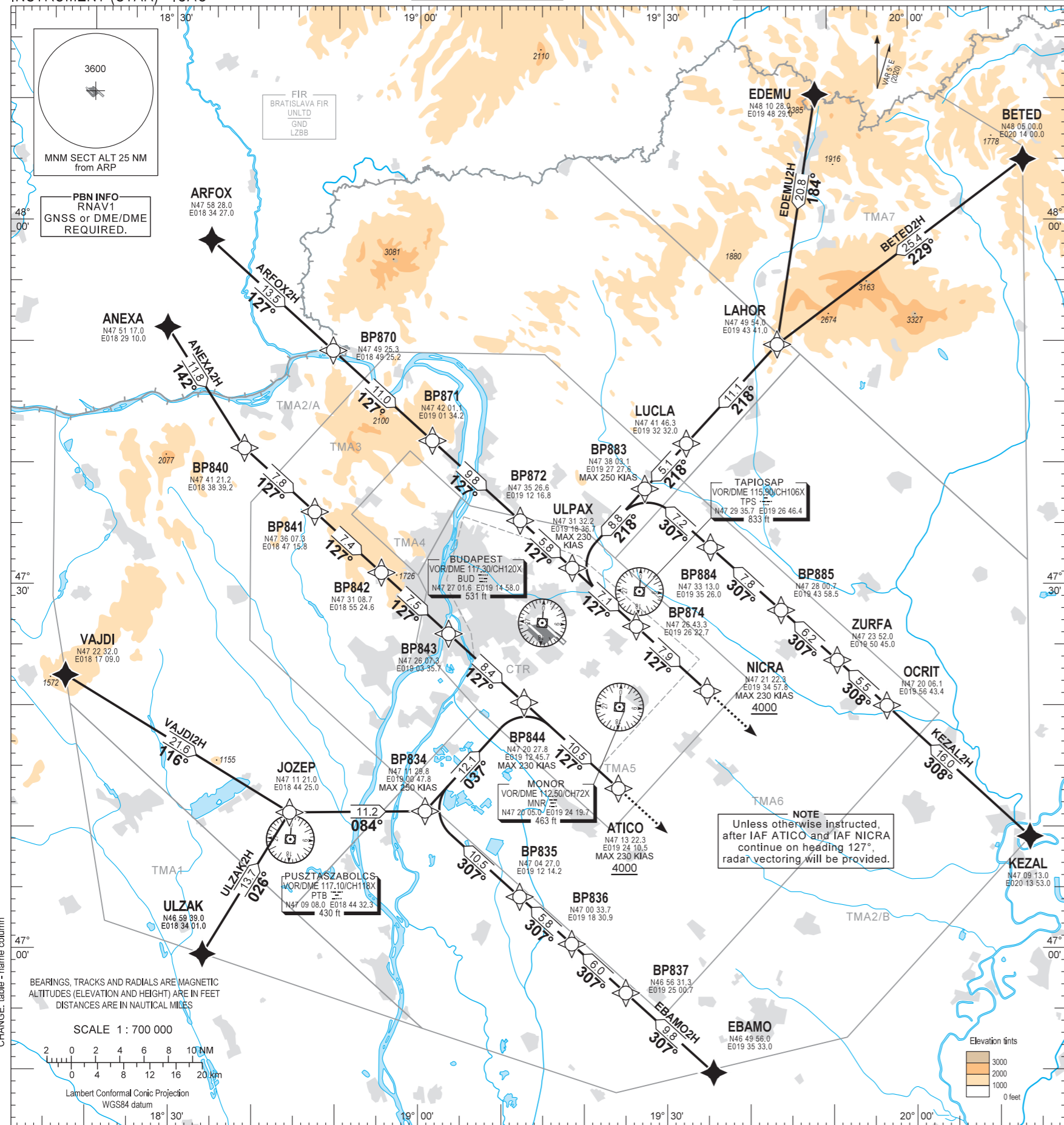


STANDARD ARRIVAL CHART -  
INSTRUMENT (STAR) - ICAO

TRANSITION ALTITUDE  
10000

BUDAPEST APP 122.975 123.860 BUDAPEST GROUND 121.910  
119.510 BUDAPEST DELIVERY 134.540  
BUDAPEST TOWER 118.100 ATIS 132.380 (117.300)  
BUDAPEST INFORMATION (NORTH) 119.350

BUDAPEST/LISZT FERENC  
RNAV RWY 31L, 31R  
ANEXA2H, ARFOX2H, ULZAK2H, BETED2H  
EBAMO2H, EDEMU2H, KEZAL2H, VAJDI2H



NAME	PROCEDURE	RESTRICTIONS
<b>ANEXA2H</b> (ANEXA TWO HOTEL ARRIVAL)	From ANEXA to BP840, to BP841, to BP842, to BP843, to BP844, to ATICO at or above 4000.	MAX 230 KIAS at ATICO and NICRA.
<b>VAJDI2H</b> (VAJDI TWO HOTEL ARRIVAL)	From VAJDI to JOZEP. To BP834, maximum speed 250 KIAS. To BP844, maximum speed 230 KIAS. To ATICO at or above 4000.	
<b>ULZAK2H</b> (ULZAK TWO HOTEL ARRIVAL)	From ULZAK to JOZEP. To BP834, maximum speed 250 KIAS. To BP844, maximum speed 230 KIAS. To ATICO at or above 4000.	
<b>EBAMO2H</b> (EBAMO TWO HOTEL ARRIVAL)	From EBAMO to BP837, to BP836, to BP835. To BP834, maximum speed 250 KIAS. To BP844, maximum speed 230 KIAS. To ATICO at or above 4000.	
<b>KEZAL2H</b> (KEZAL TWO HOTEL ARRIVAL)	From KEZAL to OCRIT, to ZURFA, to BP885, to BP884. To BP883, maximum speed 250 KIAS. To ULPAX, maximum speed 230 KIAS. To BP874, to NICRA at or above 4000.	
<b>BETED2H</b> (BETED TWO HOTEL ARRIVAL)	From BETED to LAHOR, to LUCLA, to BP883. To ULPAX, maximum speed 230 KIAS. To BP874, to NICRA at or above 4000.	
<b>EDEMU2H</b> (EDEMU TWO HOTEL ARRIVAL)	From EDEMU to LAHOR, to LUCLA, to BP883. To ULPAX, maximum speed 230 KIAS. To BP874, to NICRA at or above 4000.	
<b>ARFOX2H</b> (ARFOX TWO HOTEL ARRIVAL)	From ARFOX to BP870, BP871, to BP872, to ULPAX, to BP874, to NICRA at or above 4000.	

BUDAPEST TMA						BUDAPEST CTR	
TMA1		TMA3		TMA6		CTR	
TMA2/A		TMA4		TMA7			
TMA2/B		TMA5					

THIS PAGE IS INTENTIONALLY LEFT BLANK