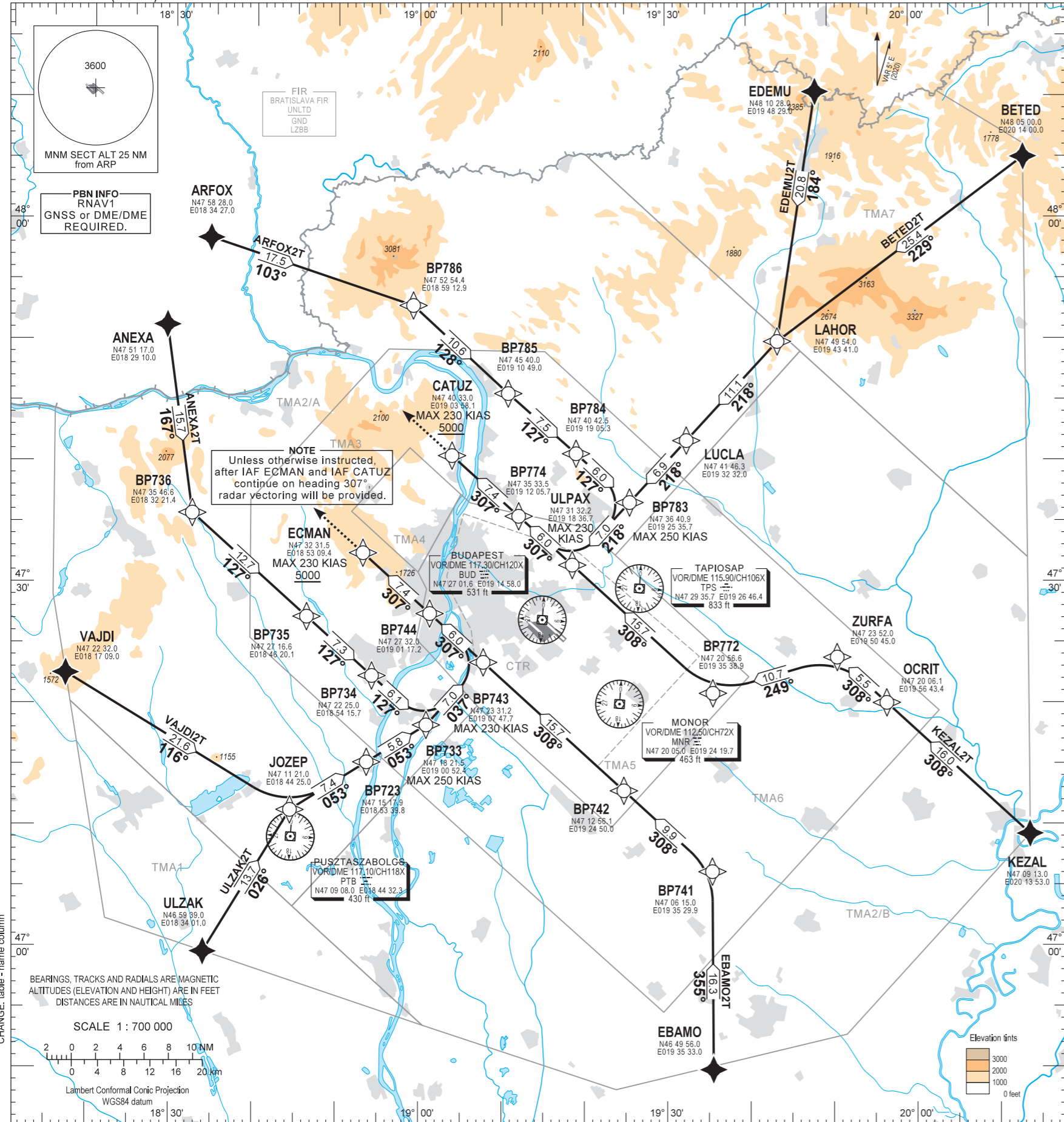


STANDARD ARRIVAL CHART - INSTRUMENT (STAR) - ICAO

TRANSITION ALTITUDE
10000

BUDAPEST APP 122.975 123.860 BUDAPEST GROUND 121.910
BUDAPEST DELIVERY 134.540
BUDAPEST TOWER 118.100 ATIS 132.380 (117.300)
BUDAPEST INFORMATION (NORTH) 119.350

BUDAPEST/LISZT FERENC
RNAV Rwy 13L, 13R
ANEXA2T, ARFOX2T, ULZAK2T, BETED2T
EBAMO2T, EDEMU2T, KEZAL2T, VAJDI2T



NAME	PROCEDURE	RESTRICTIONS
ANEXA2T (ANEXA TWO TANGO ARRIVAL)	From ANEXA to BP736, to BP735, to BP734. To BP733, maximum speed 250 KIAS. To BP743, maximum speed 230 KIAS. To BP744, to ECMAN at or above 5000.	MAX 230 KIAS at ECMAN and CATUZ.
VAJDI2T (VAJDI TWO TANGO ARRIVAL)	From VAJDI to JOZEP, to BP723. To BP733, maximum speed 250 KIAS. To BP743, maximum speed 230 KIAS. To BP744, to ECMAN at or above 5000.	
ULZAK2T (ULZAK TWO TANGO ARRIVAL)	From ULZAK to JOZEP, to BP723. To BP733, maximum speed 250 KIAS. To BP743, maximum speed 230 KIAS. To BP744, to ECMAN at or above 5000.	
EBAMO2T (EBAMO TWO TANGO ARRIVAL)	From EBAMO to BP741, to BP742, to BP743, to BP744, to ECMAN at or above 5000.	
KEZAL2T (KEZAL TWO TANGO ARRIVAL)	From KEZAL to OCRIT, to ZURFA, to BP772, to ULPAX, to BP774, to CATUZ at or above 5000.	
BETED2T (BETED TWO TANGO ARRIVAL)	From BETED to LAHOR, to LUCLA, to BP783. To ULPAX, maximum speed 230 KIAS. To BP774, to CATUZ at or above 5000.	
EDEMU2T (EDEMU TWO TANGO ARRIVAL)	From EDEMU to LAHOR, to LUCLA, to BP783. To ULPAX, maximum speed 230 KIAS. To BP774, to CATUZ at or above 5000.	
ARFOX2T (ARFOX TWO TANGO ARRIVAL)	From ARFOX to BP786, to BP785, to BP784. To BP783, maximum speed 250 KIAS. To ULPAX, maximum speed 230 KIAS. To BP774, to CATUZ at or above 5000.	

BUDAPEST TMA						BUDAPEST CTR	
TMA1		TMA3		TMA6		CTR	
TMA2/A		TMA4		TMA7			
TMA2/B		TMA5					

THIS PAGE IS INTENTIONALLY LEFT BLANK