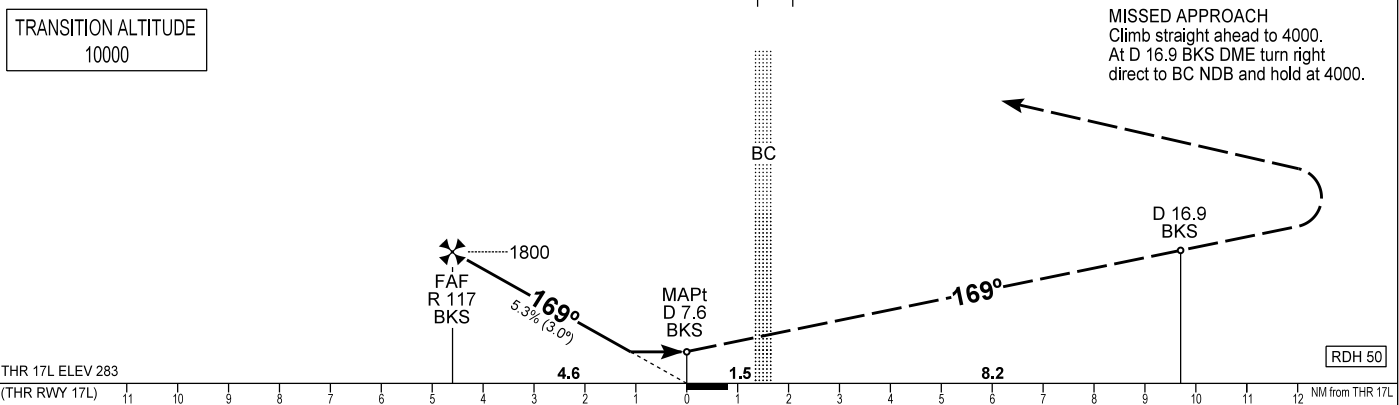
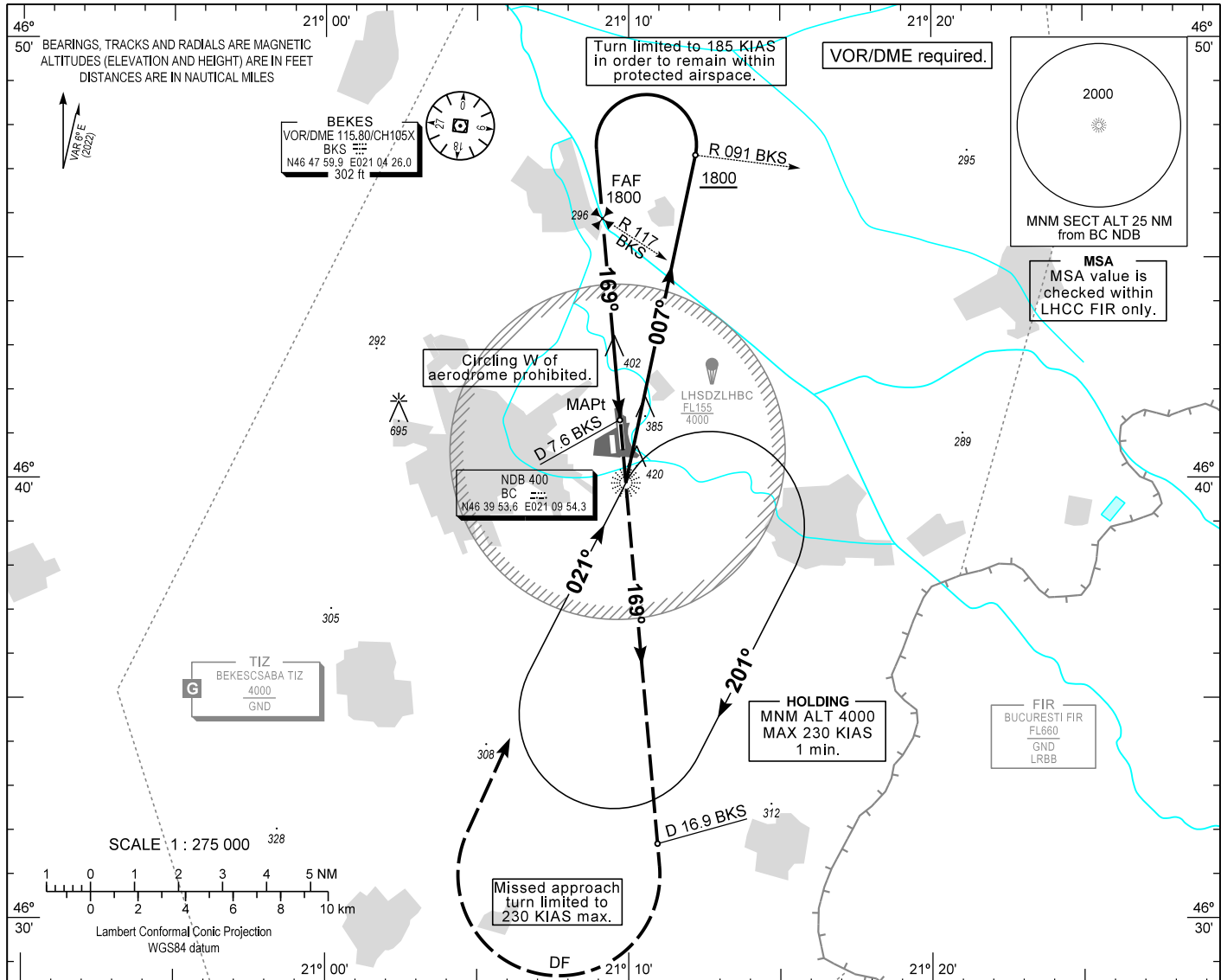


AIP HUNGARY

INSTRUMENT APPROACH CHART - ICAO
AERODROME ELEV 286
HEIGHTS RELATED TO THR RWY 17L - ELEV 283

BÉKÉSCSABA INFO 123.260
BUDAPEST INFORMATION (EAST) 133.000

BÉKÉSCSABA NDB RWY 17L
(ACFT CAT A, B, C, D)



OCA (OCH)	A	B	C	D	Timing not authorized to define the MAPt.						
	650 (370)				GS	kt	60	90	120	150	180
	STRAIGHT-IN APPROACH				FAF - MAPt 4.62 NM	min:sec	4:38	3:05	2:19	1:51	1:33
CIRCLING APPROACH W of aerodrome	ft AMSL	720	780	880	980	Rate of descent (319 ft/NM)					
	ft/min	320	480	640	800	960					
Not authorized.	VIS. m	1900	2800	3700	4600						

CHANGE: magnetic variation, minima

AD 2 LHBC INSTRUMENT APPROACH CHART NDB RWY 17L

NDB approach procedure:

Initial altitude: 4000.
Leave BC NDB on QDR 007 BC and descend to 1800 or above.
When crossing R 091 BKS VOR turn left (185 KIAS max.) and intercept QDM 169 BC (final track).
When crossing R 117 BKS VOR (FAF) descend to published minimum altitude .

Holding procedure:

Holding fix: BC NDB.
Right hand holding pattern.
Maximum speed: 230 KIAS
Inbound track: 021°
Outbound track: 201°
Rate of turn: 3°/sec. or 25° bank angle
(whichever requires lesser bank)
Outbound timing: 1 min.
Minimum holding altitude: 4000