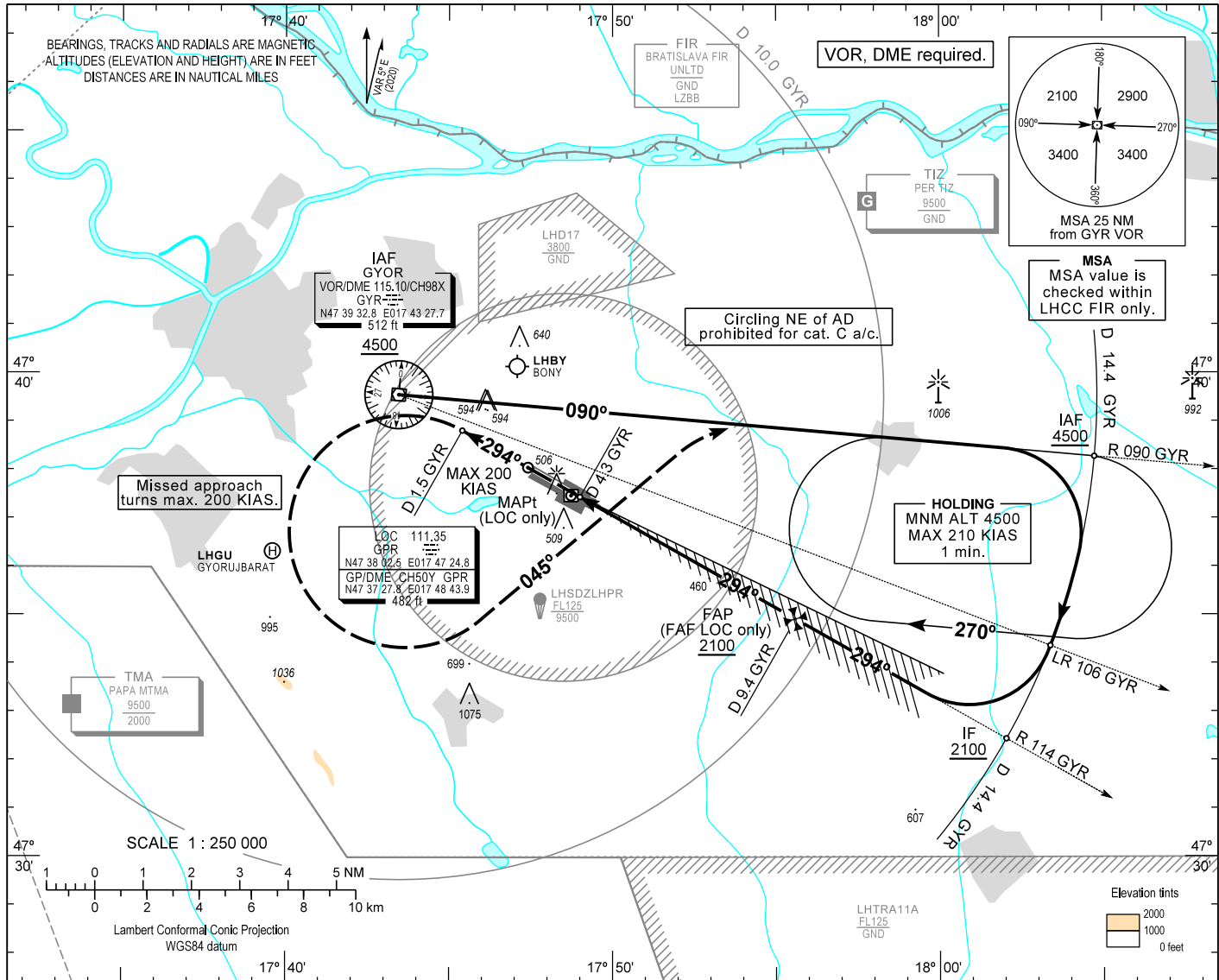


AIP HUNGARY

INSTRUMENT APPROACH CHART - ICAO
AERODROME ELEV 426
HEIGHTS RELATED TO THR RWY 29 - ELEV 426

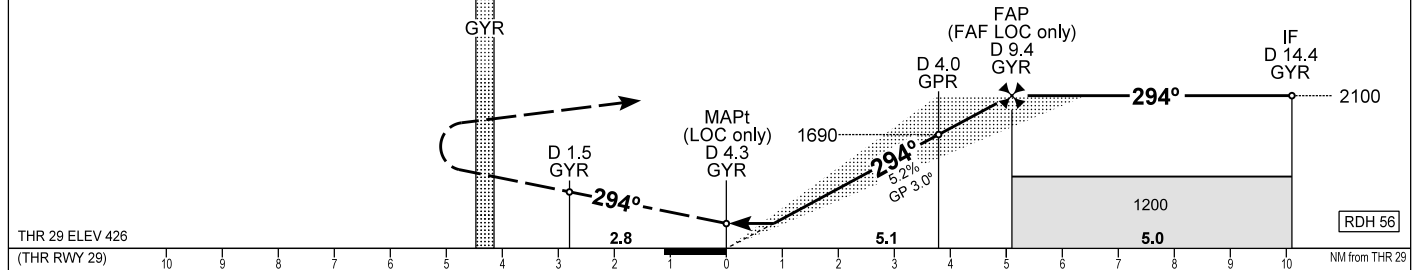
PÉR INFO 129.910
BUDAPEST INFORMATION (WEST) 125.500

GYÖR/PÉR
ILS or LOC RWY 29
(ACFT CAT A, B, C)



MISSED APPROACH
Climb 4500.
Proceed initially on R 114 GYR inbound.
When passing D 1.5 GYR on R 114 GYR turn left heading 045° to intercept R 090 GYR.
Maximum turning speed 200 KIAS.
Fly on R 090 GYR and at D 14.4 GYR enter published holding pattern at or above 4500.

TRANSITION ALTITUDE 10000



OCA (OCH)		A	B	C	DIST with GYR DME					
STRAIGHT-IN APPROACH	Cat. I.	Press. ALT	637 (211)	649 (223)	658 (232)	NM	9.0	8.0	7.0	6.0
	LOC only		790 (370)			NM	4.9	3.9	2.9	1.9
CIRCLING APPROACH		ft AMSL	890	940	1180 SW of AD only	ft	1980	1660	1340	1020
		VIS. m	1900	2800	3700	Timing not authorized to define the MAPt.				
GROUND SPEED						kt	60	90	120	150
FAF - MAPt 5.1 NM						min:sec	5:06	3:24	2:33	2:03
Rate of descent (319 ft/NM)						ft/min	320	480	640	800

CHANGE: minima box, obstacles

AD 2 LHPR INSTRUMENT APPROACH CHART ILS OR LOC RWY 29

ILS approach procedure:

Initial altitude at or above 4500.

Leave GYR VOR on R 090 GYR. At D 14.4 GYR turn right and join CW D 14.4 GYR DME arc.

After crossing R 106 GYR leading radial turn right and intercept R 114 GYR inbound (final track), to D 14.4 GYR (IF) descend 2100.

When crossing D 9.4 GYR (FAF) descend to published minimum altitude.

Holding procedure:

Holding fix: GYR R 090 / D 14.4

Right hand holding pattern.

Maximum speed: 210 KIAS

Inbound track: 090°

Outbound track: 270°

Outbound timing: 1 min.

Minimum holding altitude: 4500

Maximum holding altitude: 8500

Rate of turn: 3°/sec. or 25° bank angle

(whichever requires lesser bank)

Entry: Sector 1 (parallel) and Sector 2 (offset) entries prohibited