

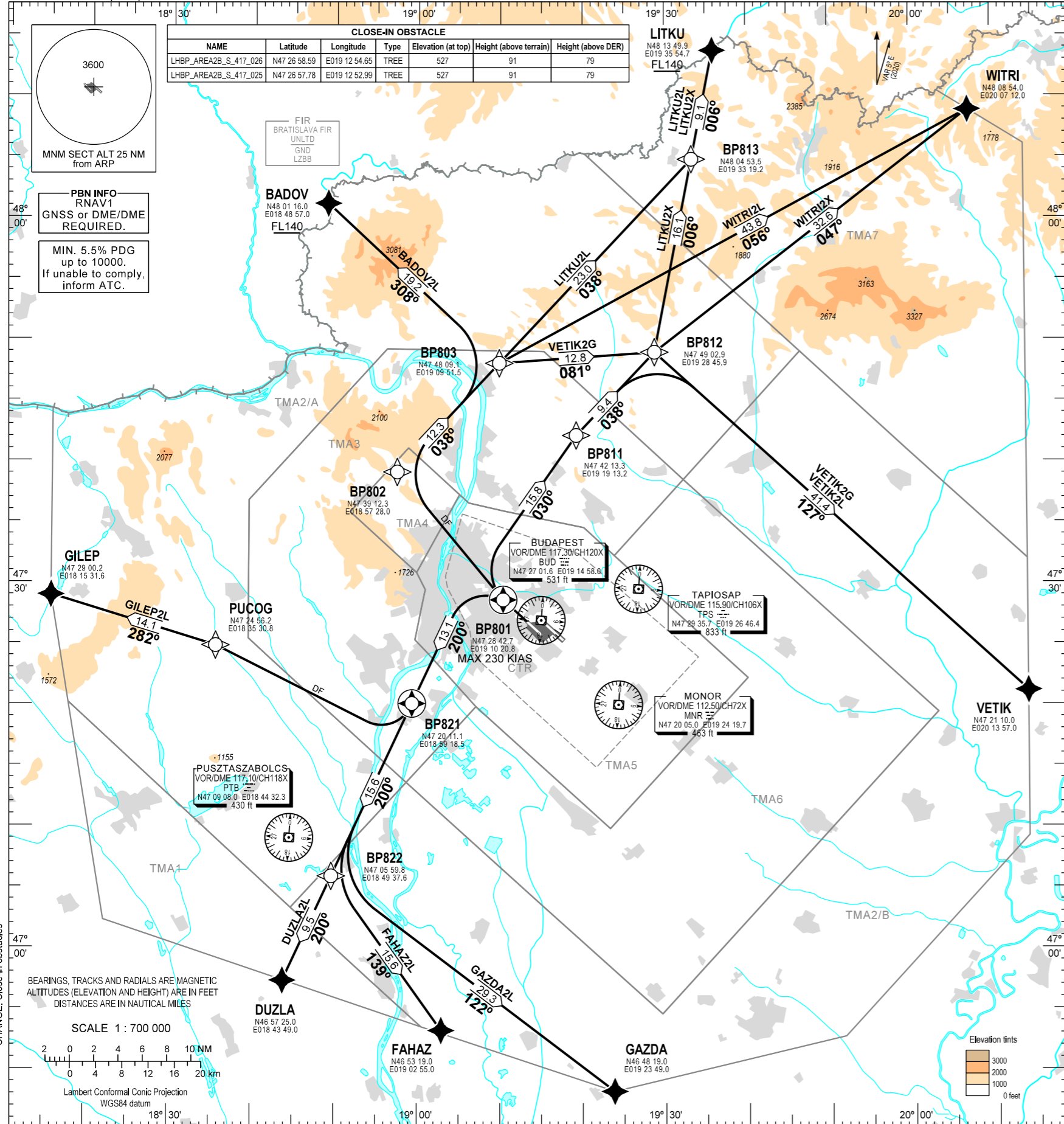
STANDARD DEPARTURE CHART -
INSTRUMENT (SID) - ICAO

TRANSITION ALTITUDE
10000

BUDAPEST APP 122.975 123.860 BUDAPEST GROUND 121.910
BUDAPEST TOWER 118.100 BUDAPEST DELIVERY 134.540
BUDAPEST INFORMATION (NORTH) 119.350

BUDAPEST/LISZT FERENC
RNAV Rwy 31L
BADOV2L, DUZLA2L, FAHAZ2L, GAZDA2L, GILEP2L,
WITRI2L, WITRI2X, LITKU2L, LITKU2X, VETIK2G, VETIK2L

CLOSE-IN OBSTACLE						
NAME	Latitude	Longitude	Type	Elevation (at top)	Height (above terrain)	Height (above DER)
LHBP_AREA2B_S_417_026	N47 26 58.59	E019 12 54.65	TREE	527	91	79
LHBP_AREA2B_S_417_025	N47 26 57.78	E019 12 52.99	TREE	527	91	79



CLIMBING:
Min. 5.5% PDG up to 10000. If unable to comply, inform ATC. After departure climb initially 7000. Further climb only by ATC.

CONTACT:
If pilot not otherwise instructed by Budapest TWR, all departing aircraft, irrespective of the assigned SID, when passing 3000, shall contact Budapest APP on 122.975.

R/T FAILURE:
If a departing controlled aircraft having acknowledged an initial (eg. 7000) or intermediate clearance, to climb to a level other than the one specified in the filed FPL for the en-route phase of the flight and no time or geographical limit was included in the clearance, should maintain for a period of seven minutes the level (eg. 7000) to which it was cleared and then should climb to the level included in the filed FPL unless the cruising level was definitely specified in the en-route clearance.

SID NAME	PROCEDURE	RESTRICTIONS
VETIK2L (VETIK TWO LIMA DEPARTURE)	To BP801 climb on course 307°. To BP811 on course 030°, to BP812, to VETIK.	
VETIK2G (VETIK TWO GOLF DEPARTURE)	To BP801 climb on course 307°. Direct to BP802. To BP803, to BP812, to VETIK.	
WITRI2X (WITRI TWO X-RAY DEPARTURE)	To BP801 climb on course 307°. To BP811 on course 030°, to BP812, to WITRI.	
WITRI2L (WITRI TWO LIMA DEPARTURE)	To BP801 climb on course 307°. Direct to BP802. To BP803, to WITRI.	
LITKU2X (LITKU TWO X-RAY DEPARTURE)	To BP801 climb on course 307°. To BP811 on course 030°, to BP812, to BP813, to LITKU at or above FL140.	
LITKU2L (LITKU TWO LIMA DEPARTURE)	To BP801 climb on course 307°. Direct to BP802. To BP803, to BP813, to LITKU at or above FL140.	MAX 230 KIAS at BP801.
BADOV2L (BADOV TWO LIMA DEPARTURE)	To BP801 climb on course 307°. Direct to BP802. To BP803, to BADOV at or above FL140.	
GILEP2L (GILEP TWO LIMA DEPARTURE)	To BP801 climb on course 307°. To BP821 on course 200°. Direct to PUCOG. To GILEP.	
DUZLA2L (DUZLA TWO LIMA DEPARTURE)	To BP801 climb on course 307°. To BP821 on course 200°. To BP822, to DUZLA.	
FAHAZ2L (FAHAZ TWO LIMA DEPARTURE)	To BP801 climb on course 307°. To BP821 on course 200°. To BP822, to FAHAZ.	
GAZDA2L (GAZDA TWO LIMA DEPARTURE)	To BP801 climb on course 307°. To BP821 on course 200°. To BP822, to GAZDA.	

Recommended navaid: BUD VOR.

BUDAPEST TMA						BUDAPEST CTR	
TMA1	TMA BUDAPEST TMA1 FL195 9500	TMA3	TMA BUDAPEST TMA3 FL195 3500	TMA6	TMA BUDAPEST TMA6 FL195 2500	CTR	CTA BUDAPEST CTR 3500 GND
TMA2/A	TMA BUDAPEST TMA2/A FL195 5500	TMA4	TMA BUDAPEST TMA4 FL195 2500	TMA7	TMA BUDAPEST TMA7 FL195 9500		
TMA2/B	TMA BUDAPEST TMA2/B FL195 5500	TMA5	TMA BUDAPEST TMA5 FL195 2000				

THIS PAGE IS INTENTIONALLY LEFT BLANK