

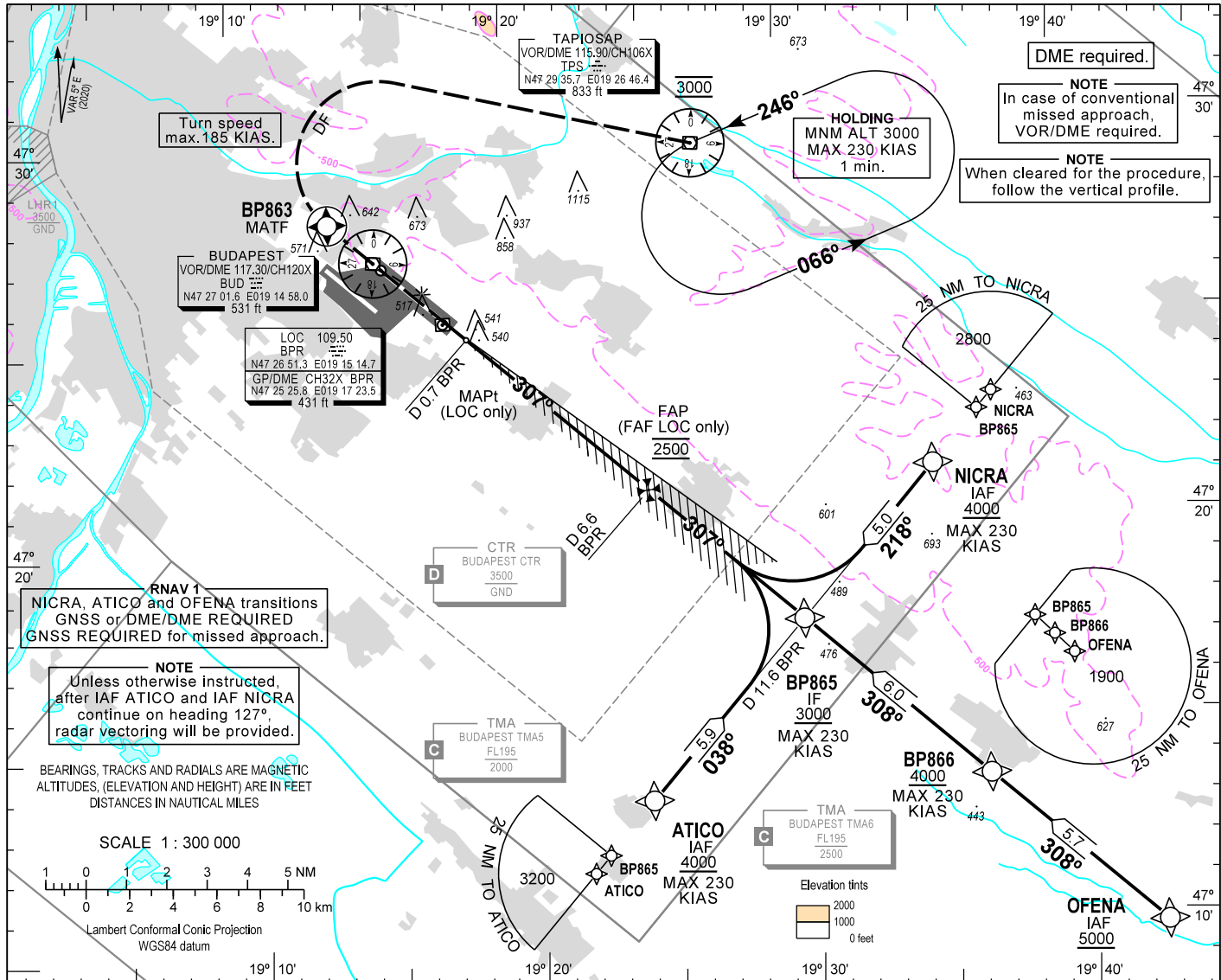
AIP HUNGARY

INSTRUMENT APPROACH CHART - ICAO

AERODROME ELEV 496
HEIGHTS RELATED TO THR RWY 31R - ELEV 416

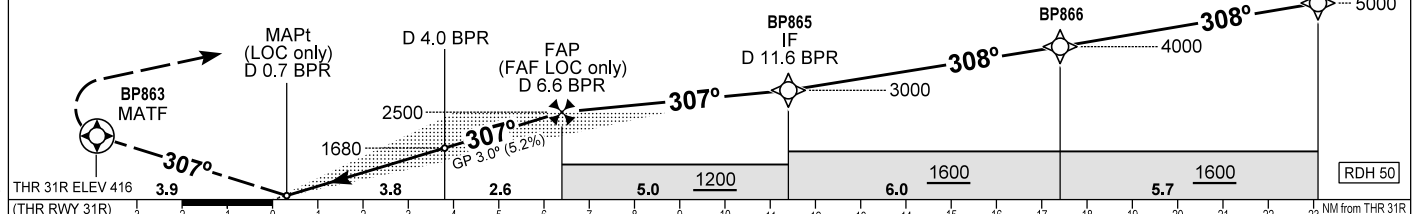
BUDAPEST APP 122.975 123.860
BUDAPEST GROUND 121.910
BUDAPEST TOWER 119.510
BUDAPEST DELIVERY 134.540
BUDAPEST INFORMATION (NORTH) 119.350
ATIS 132.380 (117.300)

BUDAPEST/LISZT FERENC
ILS or LOC RWY 31R
(ACFT CAT A, B, C, D)



MISSED APPROACH (RNAV)
Climb to BP863. At BP863 turn right direct to TPS and continue climb to 3000. Maximum turning speed 185 KIAS. At 3000 enter published holding pattern at TPS VOR/DME.

MISSED APPROACH (CONVENTIONAL)
Climb to 3000 initially on R 127 BUD inbound. After passing the station continue on R 307 BUD outbound. When passing D 1.5 BUD on R 307 BUD turn right to TPS VOR. Maximum turning speed 185 KIAS. At 3000 enter published holding pattern at TPS VOR/DME.



OCA (H)		A	B	C	D	DME BPR									
STRAIGHT-IN APPROACH	CAT I	597 (181)	610 (194)	618 (202)	628 (212)	NM	6.0	5.0	4.0	3.0	2.0				
	CAT II	506 (90)	524 (108)	538 (122)	553 (137)	NM	5.8	4.8	3.8	2.8	1.8				
	LOC	790 (380)				ft	2310	1990	1680	1360	1040				

NOTE: CAT IIIB APPROVED

GS	kt	60	90	120	150	180
FAP/FAF - THR 31R (6.4 NM)	min:sec	6:24	4:16	3:12	2:34	2:08
Rate of descent (319 ft/NM)	ft/min	320	480	640	800	960

CHANGE: Circling approaches are phased out

AD 2 LHBP INSTRUMENT APPROACH CHART ILS OR LOC RWY 31R

via OFENA

PT	WP ID	Role	OverFly	Bearing/ (Len Dur)	Turn Direction	Altitude (FT)	IAS (KT)	VRT ANG	NAV PERF
IF	OFENA	IAF				+5000			RNAV1
TF	BP866			312.6 T/5.7 NM		+4000	-230		RNAV1
TF	BP865	IF		312.5 T/6.0 NM		+3000	-230		RNAV1
CF	BP864	FAF		312.5 T/5.0 NM		@2500			
CF	RW31R	LTP	Y	312.4 T/6.4 NM		+466		-3.0	
TF	BP863	MATF	Y	312.3 T/3.9 NM			-185		RNP APCH
DF	TPS				R	@3000	-185		RNP APCH
HM	TPS	MAHF		251.0 T/1 min	L	@3000	-230		RNP APCH

via NICRA

PT	WP ID	Role	OverFly	Bearing/ (Len Dur)	Turn Direction	Altitude (FT)	IAS (KT)	VRT ANG	NAV PERF
IF	NICRA	IAF				+4000	-230		RNAV1
TF	BP865	IF		222.5 T/5.0 NM		+3000	-230		RNAV1
CF	BP864	FAF		312.5 T/5.0 NM		@2500			
CF	RW31R	LTP	Y	312.4 T/6.4 NM		+466		-3.0	
TF	BP863	MATF	Y	312.3 T/3.9 NM			-185		RNP APCH
DF	TPS				R	@3000	-185		RNP APCH
HM	TPS	MAHF		251.0 T/1 min	L	@3000	-230		RNP APCH

via ATICO

PT	WP ID	Role	OverFly	Bearing/ (Len Dur)	Turn Direction	Altitude (FT)	IAS (KT)	VRT ANG	NAV PERF
IF	ATICO	IAF				+4000	-230		RNAV1
TF	BP865	IF		042.6 T/5.9 NM		+3000	-230		RNAV1
CF	BP864	FAF		312.5 T/5.0 NM		@2500			
CF	RW31R	LTP	Y	312.4 T/6.4 NM		+466		-3.0	
TF	BP863	MATF	Y	312.3 T/3.9 NM			-185		RNP APCH
DF	TPS				R	@3000	-185		RNP APCH
HM	TPS	MAHF		251.0 T/1 min	L	@3000	-230		RNP APCH

WAYPOINT COORDINATES SEE: AD 2.22.