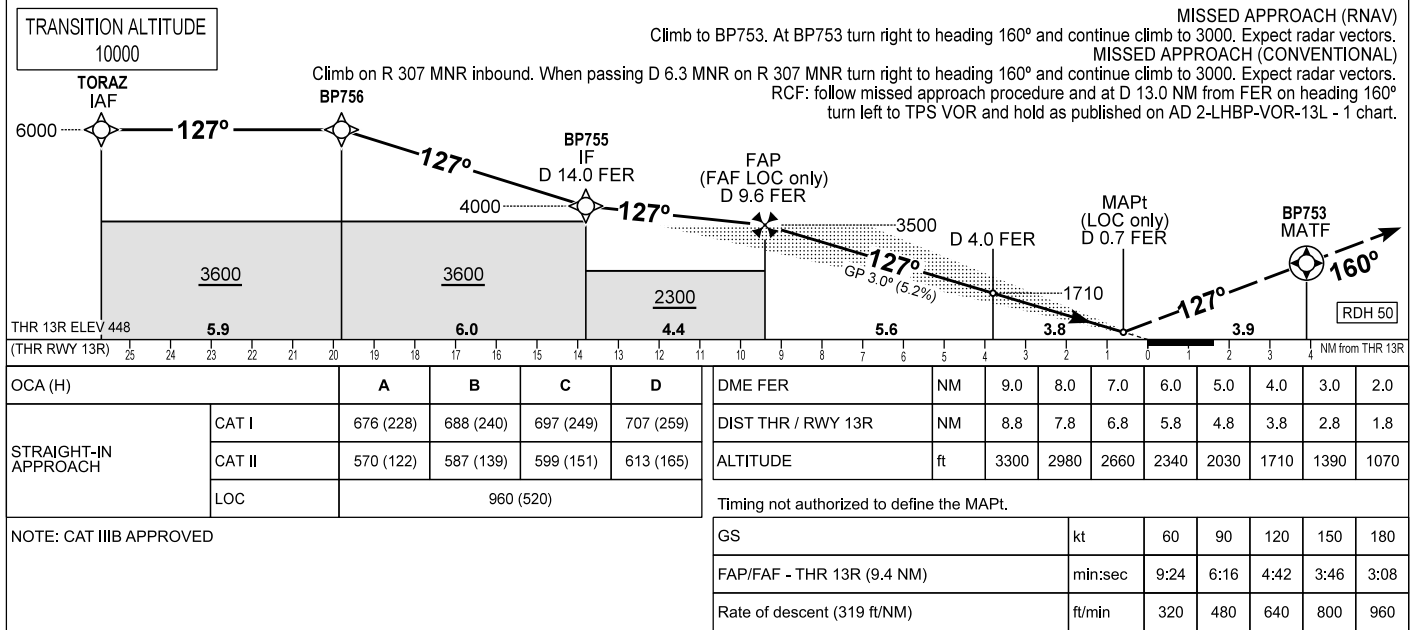
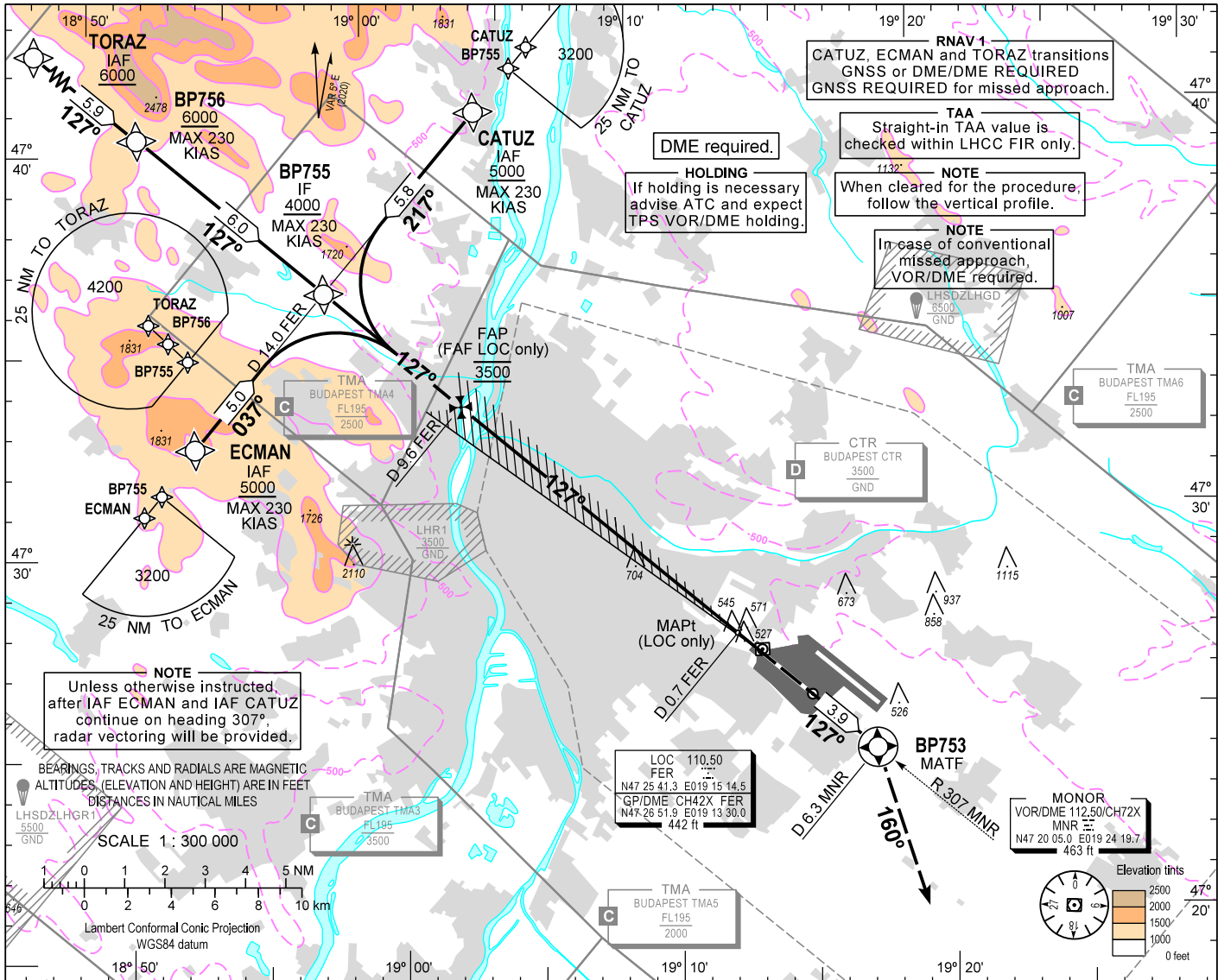


AIP HUNGARY

INSTRUMENT APPROACH CHART - ICAO  
AERODROME ELEV 496  
HEIGHTS RELATED TO THR RWY 13R - ELEV 448

BUDAPEST APP 122.975 123.860  
BUDAPEST GROUND 121.910  
BUDAPEST DELIVERY 134.540  
BUDAPEST TOWER 118.100  
ATIS 132.380 (117.300)  
BUDAPEST INFORMATION (NORTH) 119.350

BUDAPEST/LISZT FERENC  
ILS or LOC RWY 13R  
(ACFT CAT A, B, C, D)



CHANGE: Circling approaches are phased out

OCA (H)		A	B	C	D
STRAIGHT-IN APPROACH	CAT I	676 (228)	688 (240)	697 (249)	707 (259)
	CAT II	570 (122)	587 (139)	599 (151)	613 (165)
	LOC	960 (520)			

NOTE: CAT IIIB APPROVED

DME FER	NM	9.0	8.0	7.0	6.0	5.0	4.0	3.0	2.0
DIST THR / RWY 13R	NM	8.8	7.8	6.8	5.8	4.8	3.8	2.8	1.8
ALTITUDE	ft	3300	2980	2660	2340	2030	1710	1390	1070
Timing not authorized to define the MAPt.									
GS	kt	60	90	120	150	180			
FAP/FAF - THR 13R (9.4 NM)	min:sec	9:24	6:16	4:42	3:46	3:08			
Rate of descent (319 ft/NM)	ft/min	320	480	640	800	960			

**AD 2 LHBP INSTRUMENT APPROACH CHART ILS OR LOC RWY 13R**

via TORAZ

PT	WP ID	Role	OverFly	Bearing/ (Len Dur)	Turn Direction	Altitude (FT)	IAS (KT)	VRT ANG	NAV PERF
IF	TORAZ	IAF				+6000			RNAV1
TF	BP756			131.7 T/5.9 NM		+6000	-230		RNAV1
TF	BP755	IF		132.3 T/6.0 NM		+4000	-230		RNAV1
CF	BP754	FAF		132.4 T/4.4 NM		@3500			
CF	RW13R	LTP	Y	132.3 T/9.4 NM		+498		-3.0	
TF	BP753	MATF	Y	132.4 T/3.9 NM					RNP APCH
VM				165.0 T		@3000			

via CATUZ

PT	WP ID	Role	OverFly	Bearing/ (Len Dur)	Turn Direction	Altitude (FT)	IAS (KT)	VRT ANG	NAV PERF
IF	CATUZ	IAF				+5000	-230		RNAV1
TF	BP755	IF		222.3 T/5.8 NM		+4000	-230		RNAV1
CF	BP754	FAF		132.4 T/4.4 NM		@3500			
CF	RW13R	LTP	Y	132.3 T/9.4 NM		+498		-3.0	
TF	BP753	MATF	Y	132.4 T/3.9 NM					RNP APCH
VM				165.0 T		@3000			

via ECMAN

PT	WP ID	Role	OverFly	Bearing/ (Len Dur)	Turn Direction	Altitude (FT)	IAS (KT)	VRT ANG	NAV PERF
IF	ECMAN	IAF				+5000	-230		RNAV1
TF	BP755	IF		042.4 T/5.0 NM		+4000	-230		RNAV1
CF	BP754	FAF		132.4 T/4.4 NM		@3500			
CF	RW13R	LTP	Y	132.3 T/9.4 NM		+498		-3.0	
TF	BP753	MATF	Y	132.4 T/3.9 NM					RNP APCH
VM				165.0 T		@3000			

WAYPOINT COORDINATES SEE: AD 2.22.