

AIP HUNGARY

STANDARD DEPARTURE CHART -
INSTRUMENT (SID) -
ICAO

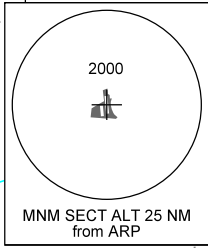
TRANSITION ALTITUDE
10000

BÉKÉSCSABA INFO 123.260
BUDAPEST INFORMATION (EAST) 133.000

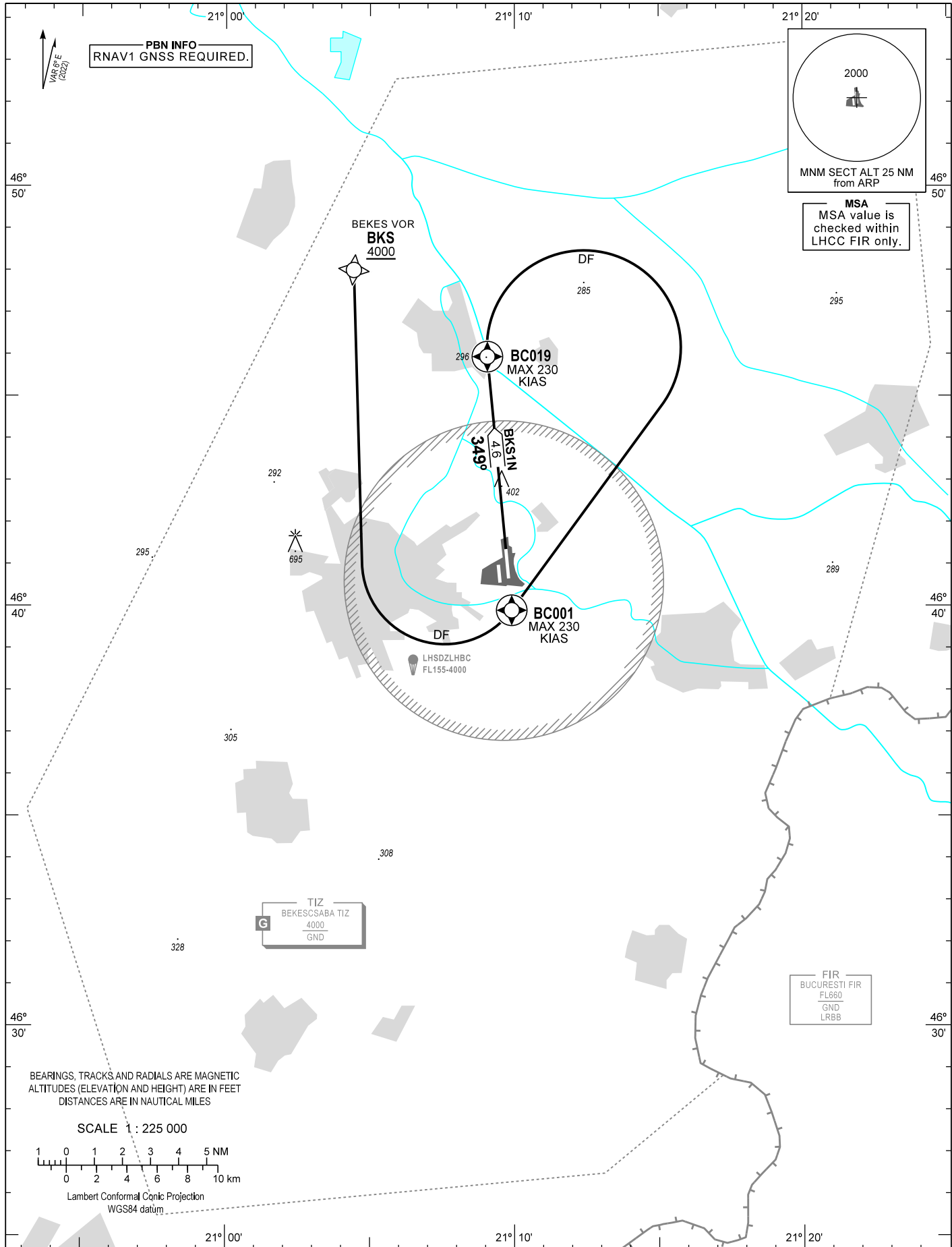
BÉKÉSCSABA
RNAV RWY 35R
BKS1N



PBN INFO
RNAV1 GNSS REQUIRED.



MSA
MSA value is
checked within
LHCC FIR only.

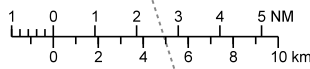


TIZ
BEKESCSABA TIZ
4000
GND

FIR
BUCURESTI FIR
FL660
GND
LRBB

BEARINGS, TRACKS AND RADIALS ARE MAGNETIC
ALTITUDES (ELEVATION AND HEIGHT) ARE IN FEET
DISTANCES ARE IN NAUTICAL MILES

SCALE 1 : 225 000



Lambert Conformal Conic Projection
WGS84 datum

CHANGE: new chart

AD 2 LHBC STANDARD DEPARTURE CHART INSTRUMENT RWY 35R

STAR NAME	PROCEDURE
BKS1N (BEKES ONE NOVEMBER DEPARTURE)	To BC019 climb on course 349°. Turn right direct to BC001. Turn right direct to BKS. Cross BKS 4000 at or above. Maximum turning speeds 230 KIAS.

WAYPOINT COORDINATES

WP ID	Latitude	Longitude
BC019	N46 45 56.1	E021 09 03.8
BC001	N46 39 53.6	E021 09 54.3
BKS	N46 47 59.9	E021 04 26.0