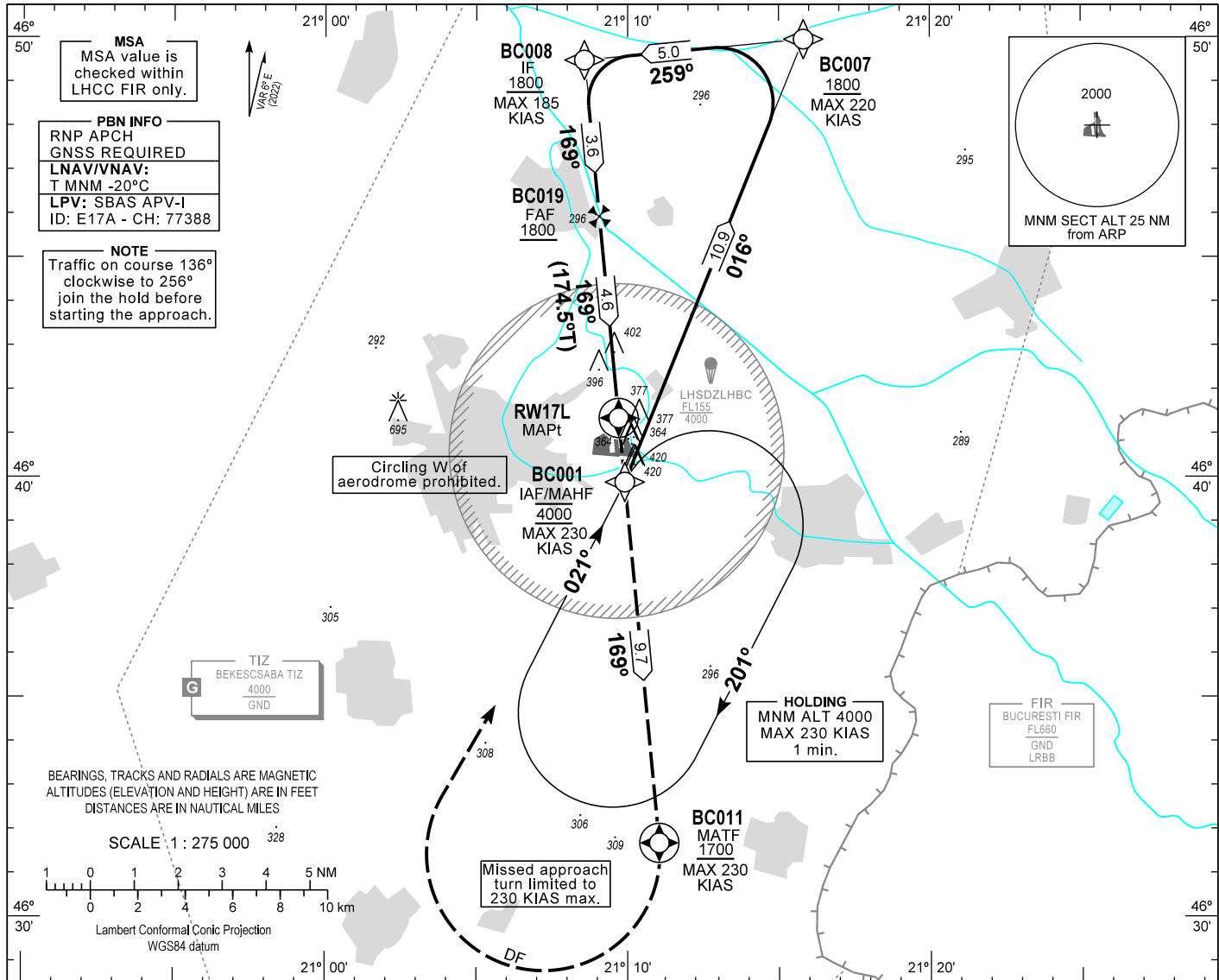


AIP HUNGARY

INSTRUMENT APPROACH CHART - ICAO
AERODROME ELEV 286
HEIGHTS RELATED TO THR RWY 17L - ELEV 283

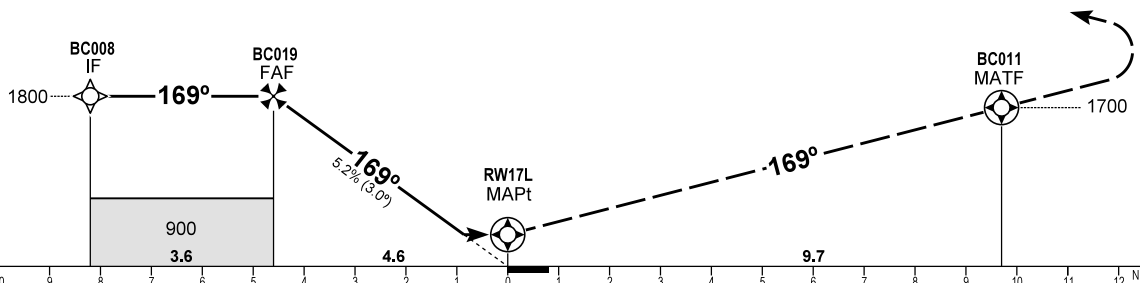
BÉKÉSCSABA INFO 123.260
BUDAPEST INFORMATION (EAST) 133.000

BÉKÉSCSABA
RNP RWY 17L
(ACFT CAT A, B, C, D)



TRANSITION ALTITUDE
10000

MISSED APPROACH
Climb to BC011 at or above 1700.
Turn right direct to BC001 and hold at 4000.
Maximum turning speed: 230 KIAS.



CHANGE: magnetic variation, minima

OCA (OCH)		A	B	C	D	DIST THR / RWY17L							
		650(370)				NM	4.0	3.0	2.0	1.0			
STRAIGHT-IN APPROACH	LNAV	650(370)				ALTITUDE							
	LNAV/VNAV	526 (243)	539 (256)	547 (264)	557 (274)	ft	1610	1290	970	650			
	LPV	511 (228)	523 (240)	531 (248)	542 (259)	Timing not authorized to define the MAPt.							
CIRCLING APPROACH W of aerodrome	ft AMSL	720	780	880	980	GROUND SPEED		kt	60	90	120	150	180
	VIS. m	1900	2800	3700	4600	FAF - RWY17L 4.6 NM		min:sec	4:36	3:04	2:18	1:51	1:32
Not authorized.						Rate of descent (319 ft/NM)		ft/min	320	480	640	800	960

AD 2 LHBC INSTRUMENT APPROACH CHART RNP RWY 17L

PT	WP ID	Role	OverFly	Bearing/ (Len Dur)	Turn Direction	Altitude (FT)	IAS (KT)	VRT ANG	NAV PERF
IF	BC001	IAF				@4000	-230		RNP APCH
TF	BC007			021.9 T/10.9 NM		+1800	-220		RNP APCH
TF	BC008	IF		264.6 T/5.0 NM	L	+1800	-185		RNP APCH
TF	BC019	FAF		174.5 T/3.6 NM		+1800			RNP APCH
TF	RW17L	MAPt	Y	174.5 T/4.6 NM		+333		-3.0°	RNP APCH
TF	BC011	MATF	Y	174.5 T/9.7 NM		+1700	-230		RNP APCH
DF	BC001				R	@4000	-230		RNP APCH
HM	BC001	MAHF		027.0T/1 min	R	@4000	-230		RNP APCH

SBAS FAS Data Block Coding Data

FAS-DB (CRC wrapped data)

Operation type	0
SBAS Provider	1
Airport identifier	LHBC
Runway	17L
Approach Performance Designator	0
Route indicator	
Reference Path Data Selector	0
Reference Path Identifier	E17A
LTP/FTP Latitude	464121.1000N
LTP/FTP Longitude	0210942.1500E
LTP/FTP Ellipsoidal Height (m)	131.3
FPAP Latitude	464026.4580N
FPAP Longitude	0210949.7505E
Threshold Crossing Height	50
TCH Units Selector	0
Glidepath Angle (degrees)	3.00
Course Width (m)	105.00
Length Offset (m)	400
HAL (m)	40.0
VAL (m)	50.0
Data Block	10 03 02 08 0C D1 00 00 01 37 31 05 98 6D 09 14 0C E5 14 09 21 19 1C 55 FE 61 3B 00 F4 01 2C 01 64 32 C8 FA 61 91 20 84
Calculated CRC Value	61912084
FAS-DB (not CRC wrapped data)	
ICAO Code	LH
LTP/FTP Orthometric Height (m)	86.3

WAYPOINT COORDINATES

WP ID	Latitude	Longitude
BC001	N46 39 53.6	E021 09 54.3
BC007	N46 49 57.8	E021 15 49.1
BC008	N46 49 29.4	E021 08 34.1
BC019	N46 45 56.1	E021 09 03.8
RW17L	N46 41 21.1	E021 09 42.2
BC011	N46 31 41.3	E021 11 02.5

Holding procedure

Holding fix: BC001
 Right hand holding pattern.
 Maximum speed: 230 KIAS
 Inbound track: 021°
 Outbound track: 201°
 Rate of turn: 3°/sec. or 25° bank angle
 (whichever requires lesser bank)
 Outbound times: 1 min.
 Minimum holding altitude: 4000