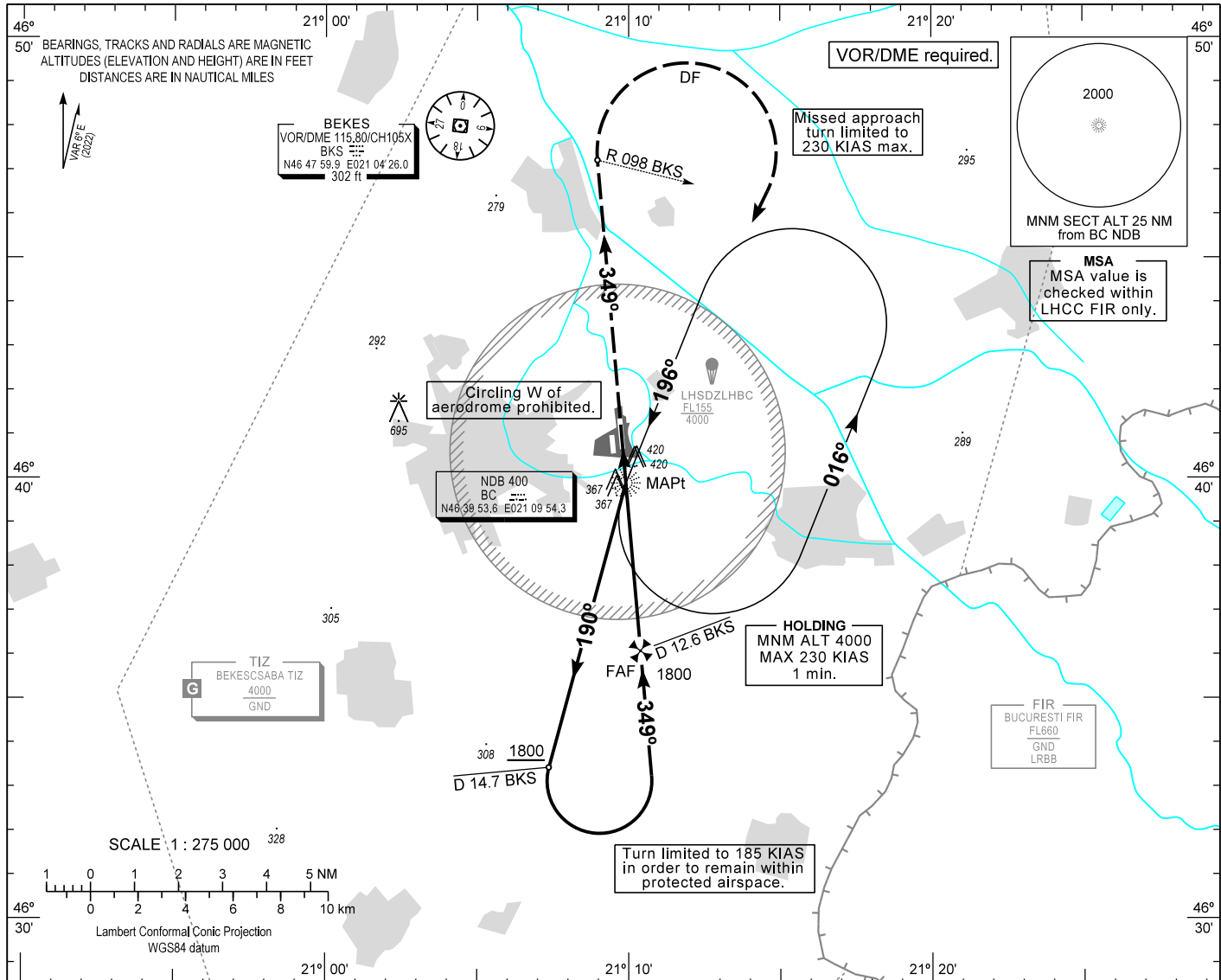


AIP HUNGARY

INSTRUMENT APPROACH CHART - ICAO
AERODROME ELEV 286
HEIGHTS RELATED TO THR RWY 35R - ELEV 286

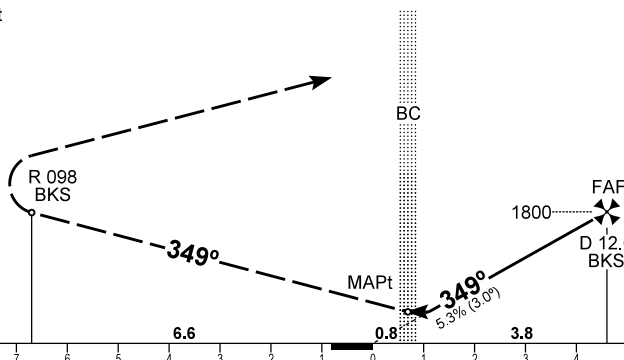
BÉKÉSCSABA INFO 123.260
BUDAPEST INFORMATION (EAST) 133.000

BÉKÉSCSABA
NDB RWY 35R
(ACFT CAT A, B, C, D)



MISSED APPROACH
Climb straight ahead to 4000.
When crossing R 098 BKS VOR turn right
direct to BC NDB and hold at 4000.

TRANSITION ALTITUDE
10000



RDH 50

CHANGE: magnetic variation, minima

THR 35R ELEV 286 (THR RWY 35R) 11 10 9 8 7 6 5 4 3 2 1 0 1 2 3 4 5 6 7 8 9 10 11 12 NM from THR 35R

OCA (OCH)		A	B	C	D	Timing not authorized to define the MAPt.						
STRAIGHT-IN APPROACH		620 (340)				GS	kt	60	90	120	150	180
CIRCLING APPROACH W of aerodrome	ft AMSL	720	780	880	980	FAF - MAPt 3.85 NM	min:sec	3:51	2:34	1:56	1:32	1:17
Not authorized.	VIS. m	1900	2800	3700	4600	Rate of descent (319 ft/NM)	ft/min	320	480	640	800	960

AD 2 LHBC INSTRUMENT APPROACH CHART NDB RWY 35R

NDB approach procedure:

Initial altitude: 4000.
Leave BC NDB on QDR 190 BC and descend to 1800 or above.
At D 14.7 BKS DME turn left (185 KIAS max.) and intercept QDM 349 BC (final track), descend to 1800.
At D 12.6 BKS DME (FAF) descend to published minimum altitude.

Holding procedure:

Holding fix: BC NDB.
Left hand holding pattern.
Maximum speed: 230 KIAS
Inbound track: 196°
Outbound track: 016°
Rate of turn: 3°/sec. or 25° bank angle
(whichever requires lesser bank)
Outbound timing: 1 min.
Minimum holding altitude: 4000