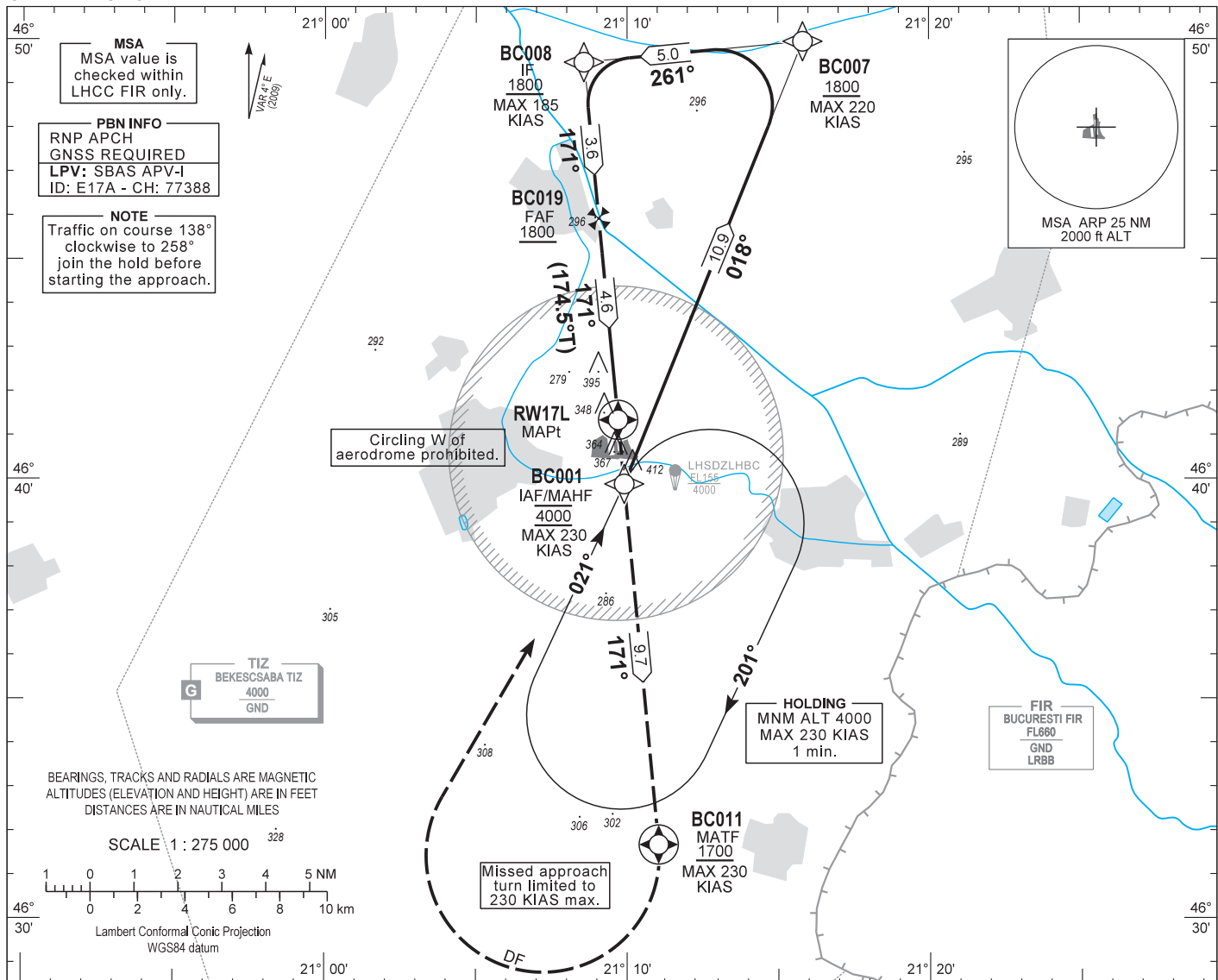


AIP HUNGARY

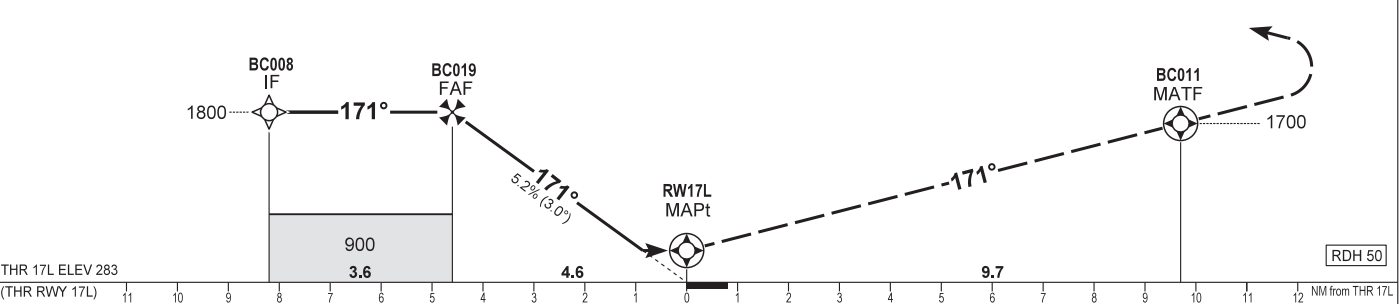
INSTRUMENT APPROACH CHART - ICAO
AERODROME ELEV 286
HEIGHTS RELATED TO THR RWY 17L - ELEV 283

BÉKÉSCSABA
RNP RWY 17L
(ACFT CAT A, B, C, D)

BÉKÉSCSABA INFO 123.260
BUDAPEST INFORMATION (EAST) 133.000



TRANSITION ALTITUDE 10000
MISSED APPROACH: Climb to BC011 at or above 1700. Turn right direct to BC001 and hold at 4000. Maximum turning speed: 230 KIAS.



| | | | | | | | | | | | |
|--------------------------------|---------|-----------|-----------|-----------|-----------|-----------------------------|------|------|------|------|------|
| OCA (OCH) | | A | B | C | D | DIST THR / RW17L | | | | | |
| | | | | | | NM | 4.0 | 3.0 | 2.0 | 1.0 | |
| STRAIGHT-IN APPROACH | LNAV | 650 (370) | | | | ALTITUDE | | | | | |
| | LPV | 504 (221) | 516 (233) | 524 (241) | 535 (252) | ft | 1610 | 1290 | 970 | 650 | |
| CIRCLING APPROACH E of AD only | ft AMSL | 720 | 780 | 880 | 980 | GROUND SPEED | | | | | |
| | VIS. m | 1900 | 2800 | 3700 | 4600 | kt | 60 | 90 | 120 | 150 | 180 |
| | | | | | | FAF - RW17L 4.6 NM | | | | | |
| | | | | | | Rate of descent (319 ft/NM) | | | | | |
| | | | | | | min:sec | 4:36 | 3:04 | 2:18 | 1:51 | 1:32 |
| | | | | | | ft/min | 320 | 480 | 640 | 800 | 960 |

AD 2 LHBC INSTRUMENT APPROACH CHART RNP RWY 17L

| PT | WP ID | Role | OverFly | Bearing/ (Len Dur) | Turn Direction | Altitude (FT) | IAS (KT) | VRT ANG | NAV PERF |
|----|-------|------|---------|-----------------------|----------------|---------------|----------|---------|----------|
| IF | BC001 | IAF | | | | @4000 | | | RNP APCH |
| TF | BC007 | | | 022.0 T/10.9 NM | | +1800 | -220 | | RNP APCH |
| TF | BC008 | IF | | 264.5 T/5.0 NM | L | +1800 | -185 | | RNP APCH |
| TF | BC019 | FAF | | 174.5 T/3.6 NM | | +1800 | | | RNP APCH |
| TF | RW17L | MAPt | Y | 174.5 T/4.6 NM | | +333 | | -3.0° | RNP APCH |
| TF | BC011 | MATF | Y | 174.6 T/9.7 NM | | +1700 | -230 | | RNP APCH |
| DF | BC001 | | | | R | @4000 | -230 | | RNP APCH |
| HM | BC001 | MAHF | | 025.0T/1 min | R | @4000 | -230 | | RNP APCH |

SBAS FAS Data Block Coding Data

FAS-DB (CRC wrapped data)

| | |
|--------------------------------------|--|
| Operation type | 0 |
| SBAS Provider | 1 |
| Airport identifier | LHBC |
| Runway | 17L |
| Approach Performance Designator | 0 |
| Route indicator | |
| Reference Path Data Selector | 0 |
| Reference Path Identifier | E17A |
| LTP/FTP Latitude | 464121.1000N |
| LTP/FTP Longitude | 0210942.1500E |
| LTP/FTP Ellipsoidal Height (m) | 131.3 |
| FPAP Latitude | 464026.4580N |
| FPAP Longitude | 0210949.7505E |
| Threshold Crossing Height | 50 |
| TCH Units Selector | 0 |
| Glidepath Angle (degrees) | 3.00 |
| Course Width (m) | 105.00 |
| Length Offset (m) | 400 |
| HAL (m) | 40.0 |
| VAL (m) | 50.0 |
| Data Block | 10 03 02 08 0C D1 00 00 01 37 31 05 98 6D 09 14 0C E5 14 09 21 19 1C 55 FE 61 3B 00 F4 01 2C 01 64 32 C8 FA 61 91 20 84 |
| Calculated CRC Value | 61912084 |
| FAS-DB (not CRC wrapped data) | |
| ICAO Code | LH |
| LTP/FTP Orthometric Height (m) | 86.3 |

WAYPOINT COORDINATES

| WP ID | Latitude | Longitude |
|-------|-------------|--------------|
| BC001 | N46 39 53.6 | E021 09 54.3 |
| BC007 | N46 49 57.8 | E021 15 49.1 |
| BC008 | N46 49 29.4 | E021 08 34.1 |
| BC019 | N46 45 56.1 | E021 09 03.8 |
| RW17L | N46 41 21.1 | E021 09 42.2 |
| BC011 | N46 31 41.3 | E021 11 02.5 |

Holding procedure

Holding fix: BC001
 Right hand holding pattern.
 Maximum speed: 230 KIAS
 Inbound track: 021°
 Outbound track: 201°
 Rate of turn: 3°/sec. or 25° bank angle
 (whichever requires lesser bank)
 Outbound times: 1 min.
 Minimum holding altitude: 4000