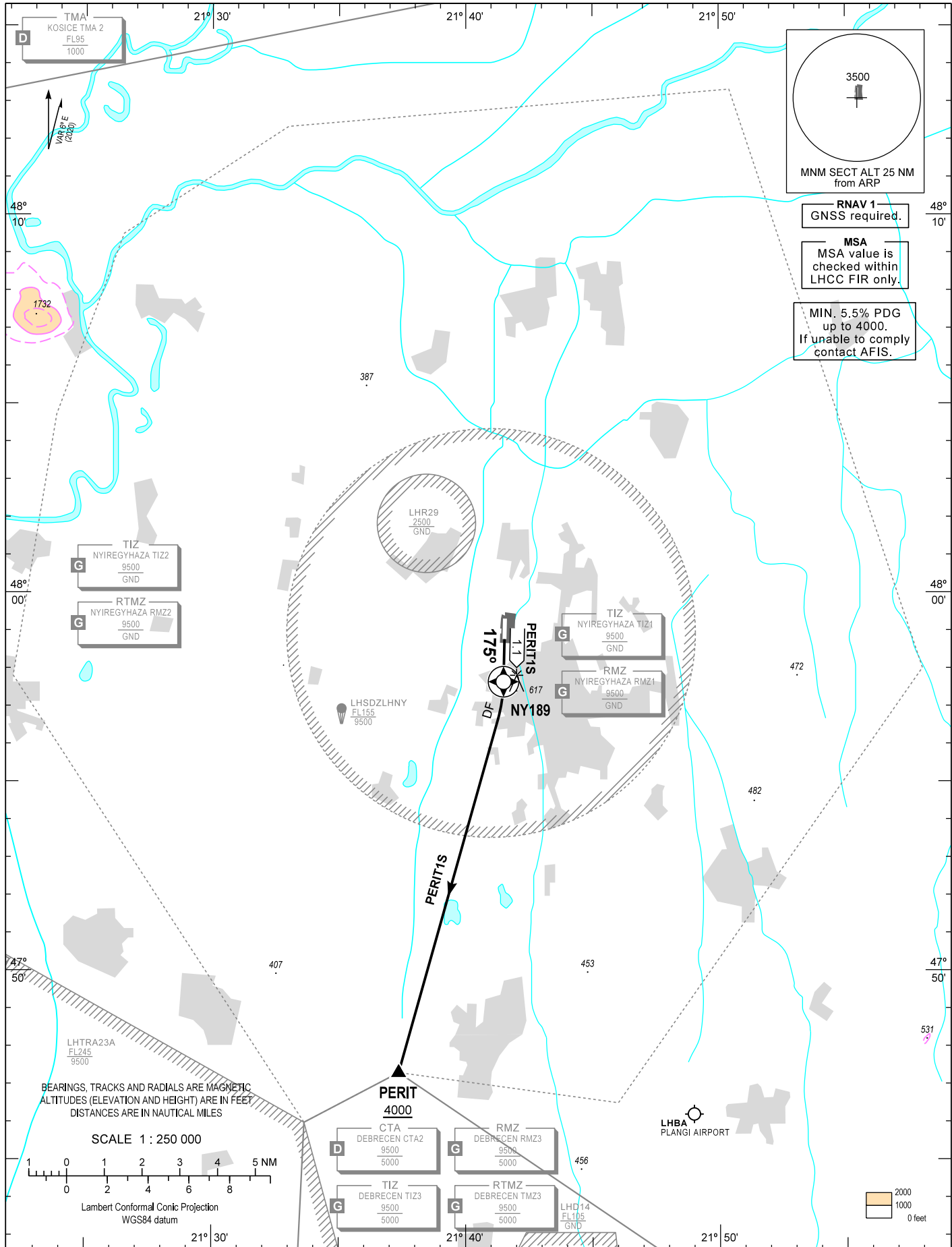


STANDARD DEPARTURE CHART -
INSTRUMENT (SID) -
ICAO

TRANSITION ALTITUDE
10000

NYIREGYHÁZA INFO 119.410
BUDAPEST INFORMATION (EAST) 133.000

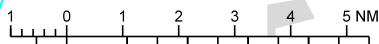
NYIREGYHÁZA
RNAV Rwy 18
PERIT1S



CHANGE: new chart

BEARINGS, TRACKS AND RADIALS ARE MAGNETIC
ALTITUDES (ELEVATION AND HEIGHT) ARE IN FEET
DISTANCES ARE IN NAUTICAL MILES

SCALE 1 : 250 000



Lambert Conformal Conic Projection
WGS84 datum

AD 2 LHNY STANDARD DEPARTURE CHART INSTRUMENT RWY 18

SID NAME	PROCEDURE
PERIT1S (PERIT ONE SIERRA DEPARTURE)	To NY189 climb on course 175°. Turn right direct to PERIT, cross PERIT at or above 4000. PDG in 5.5% due to airspace.

WAYPOINT COORDINATES

WP ID	Latitude	Longitude
NY189	N47 57 38.6	E021 41 29.5
PERIT	N47 47 18.0	E021 37 22.0

CLOSE-IN OBSTACLES

Name	Latitude	Latitude	Type	Elevation (at top) (FT)	Height (M)
LHNY_AREA2_P_064	N47 58 37.287	E021 41 23.012	TREE	396	18,62
LHNY_AREA3_L_002_003	N47 58 39.137	E021 41 21.592	TREE	392	16,84
LHNY_AREA3_L_002_005	N47 58 39.732	E021 41 21.697	TREE	391	16,27
LHNY_AREA3_P_006	N47 58 41.533	E021 41 23.396	STORM_SYSTEM	377	2,72
LHNY_AREA3_P_007	N47 58 42.602	E021 41 23.424	STORM_SYSTEM	377	2,67
LHNY_AREA3_S_004_002	N47 58 43.851	E021 41 23.488	BUILDING	367	8,46
LHNY_AREA3_P_021	N47 58 44.092	E021 41 25.190	ELECTRICAL_EXIT_LIGHT	373	10,75
LHNY_AREA3_P_013	N47 58 44.108	E021 41 24.532	ELECTRICAL_EXIT_LIGHT	374	10,81
LHNY_AREA3_L_004_002	N47 58 44.790	E021 41 24.126	TREE	360	6,54
LHNY_AREA3_P_024	N47 58 44.816	E021 41 24.864	STORM_SYSTEM	363	7,40
LHNY_AREA3_P_026	N47 58 45.291	E021 41 24.877	STORM_SYSTEM	363	7,44
LHNY_AREA3_P_027	N47 58 45.651	E021 41 25.105	TREE	391	15,79