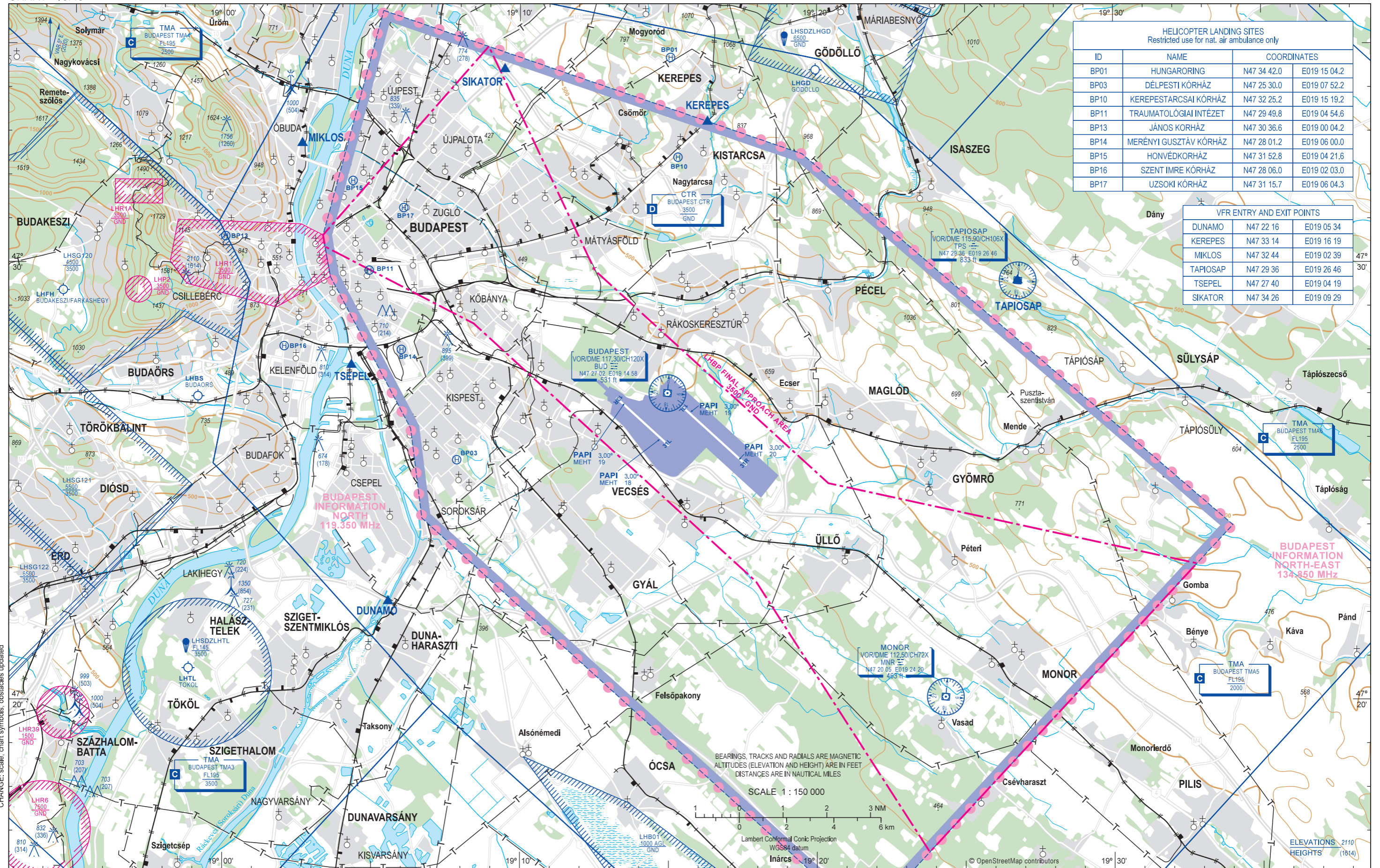


VISUAL
APPROACH
CHART - ICAO

AERODROME ELEV 496
HEIGHTS RELATED
TO AD ELEV

BUDAPEST APP	122.975	BUDAPEST TOWER	118.100	ATIS, ATIS (BUD VOR)	132.380, 117.300
	123.860	BUDAPEST GROUND	121.910	BUDAPEST INFORMATION (NORTH)	119.350
	119.510	BUDAPEST DELIVERY	134.540	BUDAPEST INFORMATION (NORTH-EAST)	134.850

BUDAPEST/LISZT FERENC



HELICOPTER LANDING SITES Restricted use for nat. air ambulance only		
ID	NAME	COORDINATES
BP01	HUNGARORING	N47 34 42.0 E019 15 04.2
BP03	DÉLPESTI KÓRHÁZ	N47 25 30.0 E019 07 52.2
BP10	KEREPESTARCSAI KÓRHÁZ	N47 32 25.2 E019 15 19.2
BP11	TRAUMATOLÓGIAI INTÉZET	N47 29 49.8 E019 04 54.6
BP13	JÁNOS KÓRHÁZ	N47 30 36.6 E019 00 04.2
BP14	MERÉNYI GUSZTÁV KÓRHÁZ	N47 28 01.2 E019 06 00.0
BP15	HONVÉDKÓRHÁZ	N47 31 52.8 E019 04 21.6
BP16	SZENT IMRE KÓRHÁZ	N47 28 06.0 E019 02 03.0
BP17	UZSOKI KÓRHÁZ	N47 31 15.7 E019 06 04.3

VFR ENTRY AND EXIT POINTS		
NAME	COORDINATES	
DUNAMO	N47 22 16 E019 05 34	
KEREPESES	N47 33 14 E019 16 19	
MIKLOS	N47 32 44 E019 02 39	
TAPIOSAP	N47 29 36 E019 26 46	
TSEPEL	N47 27 40 E019 04 19	
SIKATOR	N47 34 26 E019 09 29	

CHANGE: scale, chart symbols, obstacles updated

BEARINGS, TRACKS AND RADIALS ARE MAGNETIC
ALTITUDES (ELEVATION AND HEIGHT) ARE IN FEET
DISTANCES ARE IN NAUTICAL MILES

SCALE 1 : 150 000



Lambert Conformal Conic Projection
WGS84 datum

THIS PAGE IS INTENTIONALLY LEFT BLANK