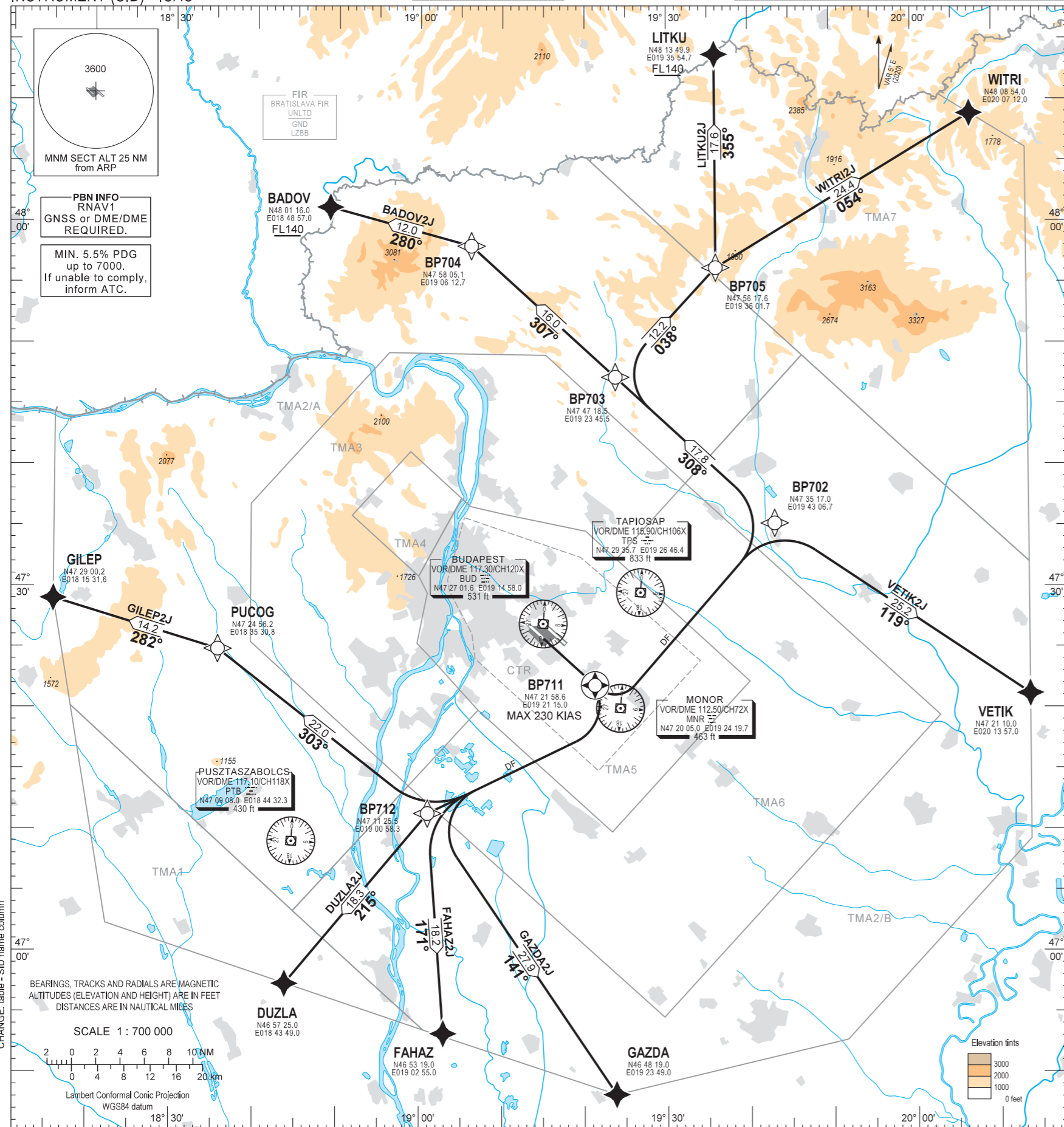


STANDARD DEPARTURE CHART -
INSTRUMENT (SID) - ICAO

TRANSITION ALTITUDE
10000

BUDAPEST APP 122.975 123.860 BUDAPEST GROUND 121.910
BUDAPEST DELIVERY 134.540
BUDAPEST TOWER 118.100 ATIS 132.380 (117.300)
BUDAPEST INFORMATION (NORTH) 119.350

BUDAPEST/LISZT FERENC
RNAV RWY 13R
BADOV2J, DUZLA2J, FAHAZ2J, GAZDA2J
GILEP2J, WITRI2J, LITKU2J, VETIK2J



An aeroplane should not be diverted from its assigned route unless:
it is necessary for the safety of the aeroplane (e.g. for avoidance of severe weather or to resolve a traffic conflict).

CLIMBING:
Min. 5.5% PDG up to 7000. If unable to comply, inform ATC. After departure climb initially 7000. Further climb only by ATC.

CONTACT:
If pilot not otherwise instructed by Budapest TWR, all departing aircraft, irrespective of the assigned SID, when passing 3000, shall contact Budapest APP on 122.975.

R/T FAILURE:
If a departing controlled aircraft having acknowledged an initial (eg. 7000) or intermediate clearance, to climb to a level other than the one specified in the filed FPL for the en-route phase of the flight and no time or geographical limit was included in the clearance, should maintain for a period of seven minutes the level (eg. 7000) to which it was cleared and then should climb to the level included in the filed FPL unless the cruising level was definitely specified in the en-route clearance.

SID NAME	PROCEDURE	RESTRICTIONS
VETIK2J (VETIK TWO JULIETT DEPARTURE)	To BP711 climb on course 127°. Direct to BP702. To VETIK.	MAX 230 KIAS at BP711.
WITRI2J (WITRI TWO JULIETT DEPARTURE)	To BP711 climb on course 127°. Direct to BP702. To BP703, to BP705, to WITRI.	
LITKU2J (LITKU TWO JULIETT DEPARTURE)	To BP711 climb on course 127°. Direct to BP702. To BP703, to BP705, to LITKU at or above FL140.	
BADOV2J (BADOV TWO JULIETT DEPARTURE)	To BP711 climb on course 127°. Direct to BP702. To BP703, to BP704, to BADOV at or above FL140.	
GILEP2J (GILEP TWO JULIETT DEPARTURE)	To BP711 climb on course 127°. Direct to BP712. To PUCOG, to GILEP.	
DUZLA2J (DUZLA TWO JULIETT DEPARTURE)	To BP711 climb on course 127°. Direct to BP712. To DUZLA.	
FAHAZ2J (FAHAZ TWO JULIETT DEPARTURE)	To BP711 climb on course 127°. Direct to BP712. To FAHAZ.	
GAZDA2J (GAZDA TWO JULIETT DEPARTURE)	To BP711 climb on course 127°. Direct to BP712. To GAZDA.	

Recommended navaid: BUD VOR.

BUDAPEST TMA						BUDAPEST CTR
TMA1	TMA BUDAPEST TMA1 FL195 9500	TMA3	TMA BUDAPEST TMA3 FL195 3500	TMA6	TMA BUDAPEST TMA6 FL195 2500	CTR BUDAPEST CTR 3500 GND
TMA2/A	TMA BUDAPEST TMA2/A FL195 5500	TMA4	TMA BUDAPEST TMA4 FL195 2500	TMA7	TMA BUDAPEST TMA7 FL195 9500	
TMA2/B	TMA BUDAPEST TMA2/B FL195 5500	TMA5	TMA BUDAPEST TMA5 FL195 2000			

CHANGE: table - SID name column

BEARINGS, TRACKS AND RADIALS ARE MAGNETIC
ALTITUDES (ELEVATION AND HEIGHT) ARE IN FEET
DISTANCES ARE IN NAUTICAL MILES

SCALE 1 : 700 000

2 0 2 4 6 8 10 NM
0 4 8 12 16 20 km

Lambert Conformal Conic Projection
WGS84 datum

THIS PAGE IS INTENTIONALLY LEFT BLANK