

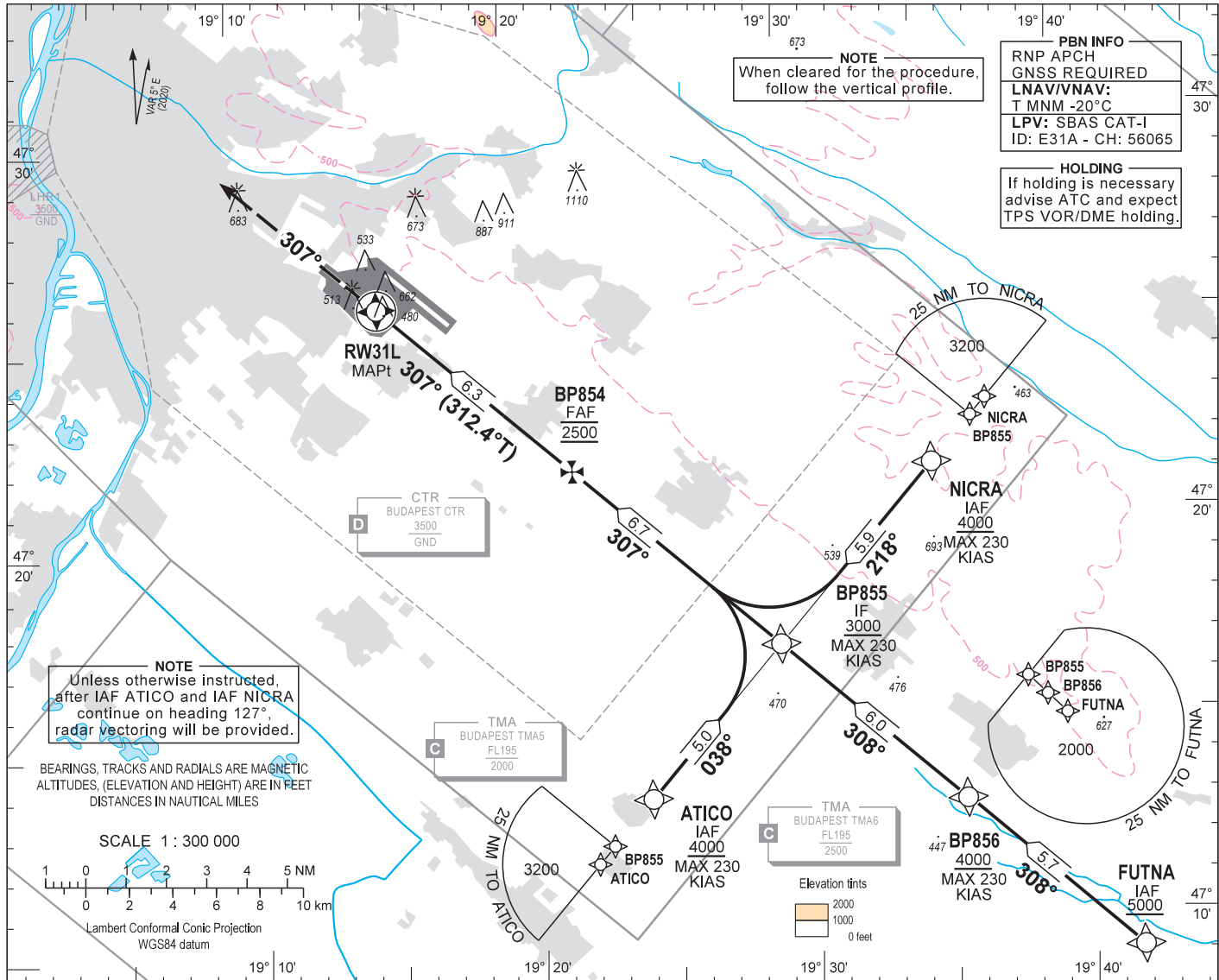
AIP HUNGARY

INSTRUMENT APPROACH CHART - ICAO

AERODROME ELEV 496
HEIGHTS RELATED TO THR RWY 31L - ELEV 448

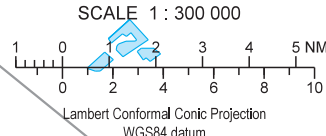
BUDAPEST APP	122.975	123.860	BUDAPEST GROUND	121.910
BUDAPEST TOWER		119.510	BUDAPEST DELIVERY	134.540
BUDAPEST INFORMATION (NORTH)		118.100	ATIS	132.380 (117,300)
				119.350

BUDAPEST/LISZT FERENC
RNP RWY 31L
(ACFT CAT A, B, C, D)



NOTE
Unless otherwise instructed, after IAF ATICO and IAF NICRA continue on heading 127°, radar vectoring will be provided.

BEARINGS, TRACKS AND RADIALS ARE MAGNETIC ALTITUDES, (ELEVATION AND HEIGHT) ARE IN FEET DISTANCES IN NAUTICAL MILES



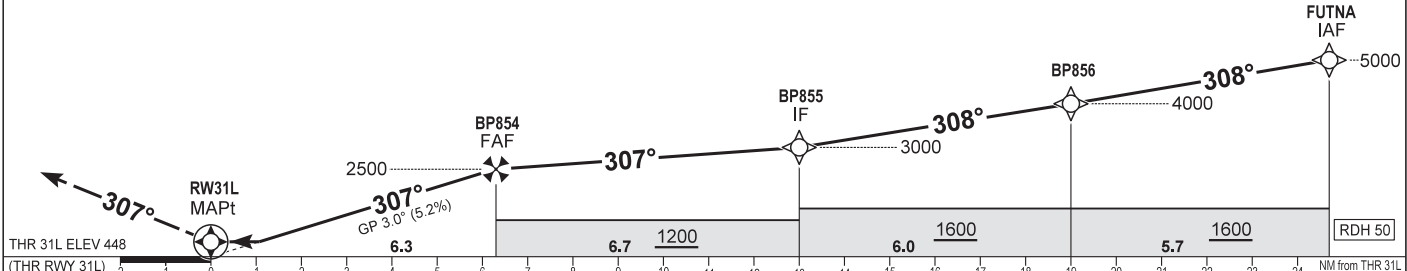
PBN INFO
RNP APCH
GNSS REQUIRED
LNAV/VNAV:
T MNM -20°C
LPV: SBAS CAT-I
ID: E31A - CH: 56065

HOLDING
If holding is necessary advise ATC and expect TPS VOR/DME holding.

NOTE
When cleared for the procedure, follow the vertical profile.

MISSED APPROACH
Climb on RWY heading to 3000. Expect radar vectors.
RCF: follow missed approach procedure and at 10.0 NM from RWY31L W/P on heading 307° turn right to TPS VOR and hold as published on AD 2-LHBP-VOR-31R - 1 chart.

TRANSITION ALTITUDE
10000



OCA (H)		A	B	C	D	DIST THR / RWY31L										
						NM	6.0	5.0	4.0	3.0	2.0					
STRAIGHT-IN APPROACH	LNAV	870 (430)	890 (450)	910 (470)	920 (480)	ALTITUDE					ft	2410	2090	1770	1450	1130
	LNAV/VNAV	817 (367)	829 (381)	848 (400)	876 (427)	Timing not authorized to define the MAPt.										
	LPV macg 2.5%	817 (369)	829 (381)	837 (389)	848 (400)	GS	kt	60	90	120	150	180				
	LPV macg 3.2%	613 (165)	626 (178)	634 (186)	644 (196)	BP854 - RWY31L (6.3 NM)	mIn:sec	6:18	4:12	3:09	2:31	2:06				
CIRCLING		980	1190	1310	1510	Rate of descent (319 ft/NM)	ft/min	320	480	640	800	960				

CHANGE: minima box

AD 2 LHBP INSTRUMENT APPROACH CHART RNP RWY 31L

via FUTNA

PT	WP ID	Role	OverFly	Bearing/ (Len Dur)	Turn Direction	Altitude (FT)	IAS (KT)	VRT ANG	NAV PERF
IF	FUTNA	IAF				+5000			RNP APCH
TF	BP856			312.6 T/5.7 NM		+4000	-230		RNP APCH
TF	BP855	IF		312.5 T/6.0 NM		+3000	-230		RNP APCH
TF	BP854	FAF		312.4 T/6.7 NM		@2500			RNP APCH
TF	RW31L	MAPt	Y	312.4 T/6.3 NM		+498		-3.0	RNP APCH
VM				312.4 T		@3000			

via ATICO

PT	WP ID	Role	OverFly	Bearing/ (Len Dur)	Turn Direction	Altitude (FT)	IAS (KT)	VRT ANG	NAV PERF
TF	ATICO	IAF				+4000	-230		RNP APCH
TF	BP855	IF		042.5 T/5.0 NM		+3000	-230		RNP APCH
TF	BP854	FAF		312.4 T/6.7 NM		@2500			RNP APCH
TF	RW31L	MAPt	Y	312.4 T/6.3 NM		+498		-3.0	RNP APCH
VM				312.4 T		@3000			

via NICRA

PT	WP ID	Role	OverFly	Bearing/ (Len Dur)	Turn Direction	Altitude (FT)	IAS (KT)	VRT ANG	NAV PERF
TF	NICRA	IAF				+4000	-230		RNP APCH
TF	BP855	IF		222.5T/5.9 NM		+3000	-230		RNP APCH
TF	BP854	FAF		312.4 T/6.7 NM		@2500			RNP APCH
TF	RW31L	MAPt	Y	312.4 T/6.3 NM		+498		-3.0	RNP APCH
VM				312.4 T		@3000			

SBAS FAS Data Block Coding Data

WAYPOINT COORDINATES SEE: AD 2.22.

FAS-DB (CRC wrapped data)

Operation type	0
SBAS provider ID	1
Airport identifier	LHBP
RWY	31L
Approach performance designator	0
Route indicator	
Reference path data selector	0
Reference path identifier	E31A
LTP/FTP latitude	472549.7100N
LTP/FTP longitude	0191500.8900E
LTP/FTP ellipsoidal height (m)	180.7
FPAP latitude	472655.6755N
FPAP longitude	0191314.1980E
Threshold crossing height (TCH)	15
TCH units	1
Glide path angle (degrees)	3.00
Course width at threshold (m)	105.00
Length offset (m)	16
Horizontal alert limit (m)	40.0
Vertical alert limit (m)	35.0
Computed Data Block	10 10 02 08 0C DF 00 00 01 31 33 05 1C DE 5A 14 34 E5 42 08 0F 1B 5B 03 02 78 BE FC 2C 81 2C 01 64 02 C8 AF 7A 70 EE 20
Computed CRC	7A70EE20
FAS-DB (not CRC wrapped)	
ICAO code	LH
LTP/FTP Orthometric height (m)	136.7