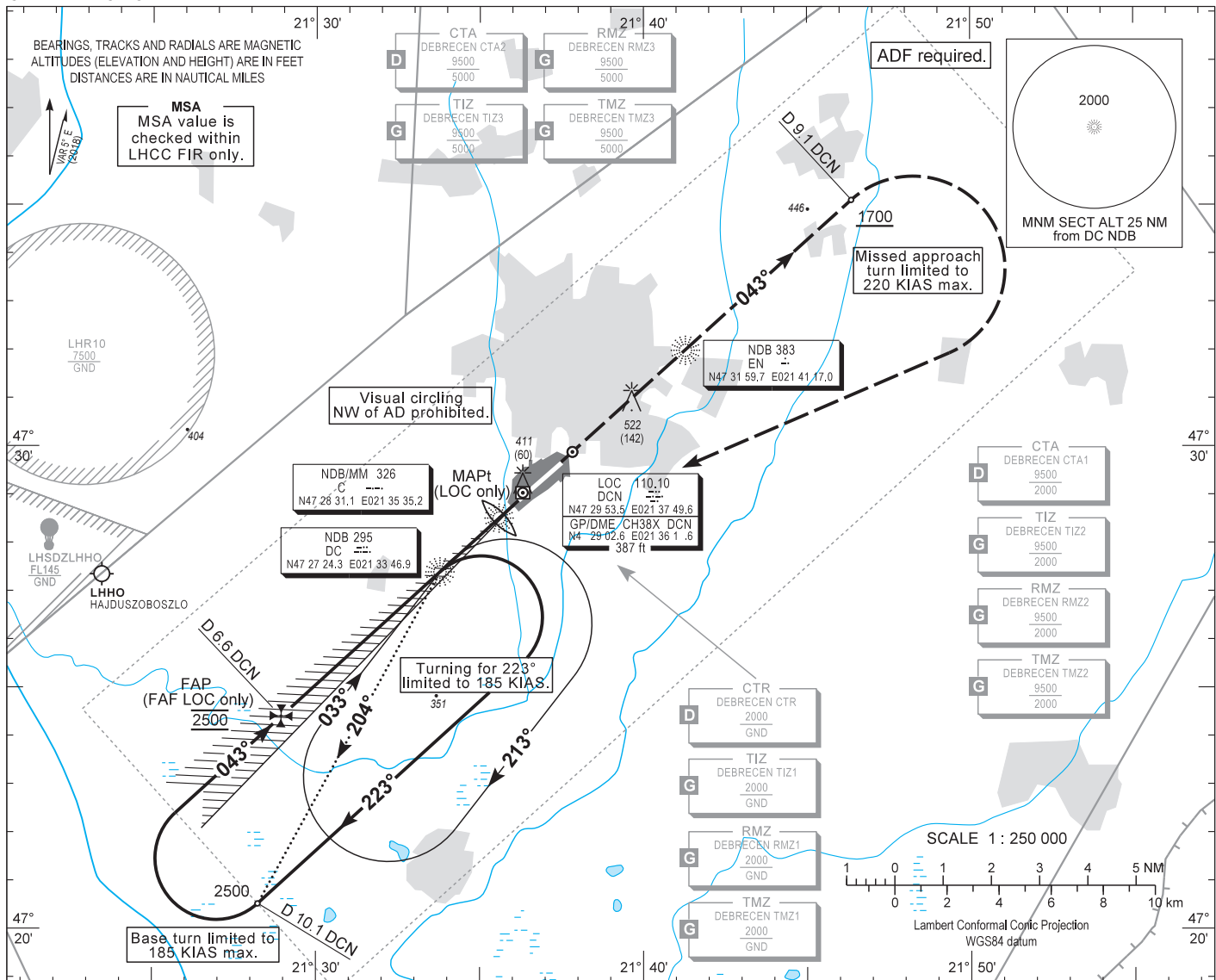


AIP HUNGARY

INSTRUMENT APPROACH CHART - ICAO
AERODROME ELEV 361
HEIGHTS RELATED TO THR RWY 04R - ELEV 355

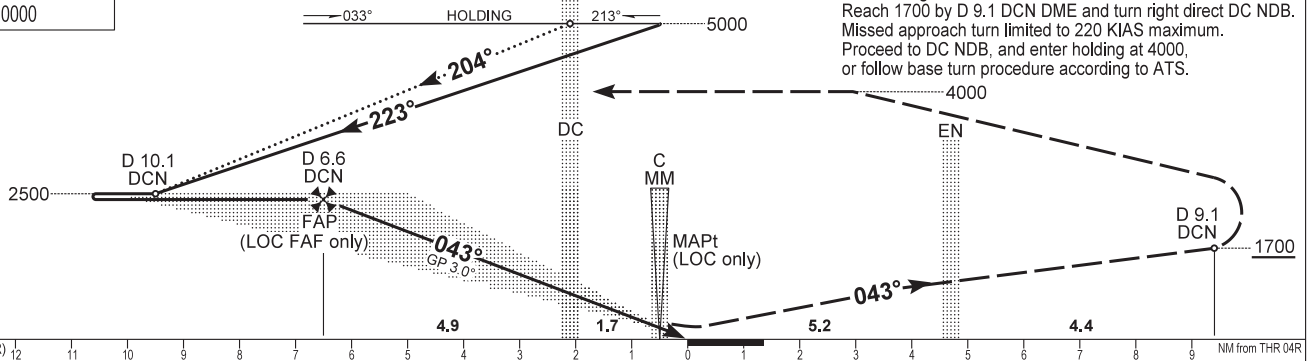
DEBRECEN TOWER 125.910
DEBRECEN INFO 125.910
BUDAPEST INFORMATION (EAST) 133.000

DEBRECEN ILS or LOC RWY 04R
(ACFT CAT A, B, C, D)



TRANSITION ALTITUDE
10000

MISSED APPROACH
Climb straight ahead to 4000.
Reach 1700 by D 9.1 DCN DME and turn right direct DC NDB.
Missed approach turn limited to 220 KIAS maximum.
Proceed to DC NDB, and enter holding at 4000,
or follow base turn procedure according to ATS.



CHANGE: separation of RTMZ into RMZ and TMZ

OCA (OCH)		A	B	C	D	DME DCN / THR RWY 04R							
STRAIGHT-IN APPROACH	Cat. I	552 (197)	564 (209)	572 (217)	582 (227)	NM	6.0	5.0	4.0	3.0	2.0	1.0	
	LOC only	660 (310)				ALTITUDE							
CIRCLING APPROACH SE of AD only	ft AMSL	830	860	960	1050	Timing not authorised for defining the MAPt.							
	VIS. m	1900	2800	3700	4600	GROUND SPEED							
						kt	80	100	120	140	160	180	
						FAP/FAF - RW04R (6.6 NM)		MIN:sec					
								4:56	3:57	3:17	2:49	2:28	2:12
						Rate of descent (326 ft/NM)		ft/min					
								430	540	650	760	870	980

AD 2 LHDC INSTRUMENT APPROACH CHART ILS OR LOC RWY 04R

ILS approach from DC NDB (Holding):

Initial altitude: 5000.

When crossing DC NDB holding fix turn right to heading 223° (185 KIAS max.) and descend to 2500.

Fly outbound and after 2.5 min. or at D 10.1 DCN DME, whichever is earlier turn right (185 KIAS max.) to intercept DCN LOC 043°.

Glide path interception at D 6.6 DCN DME(descent fix), then follow ILS.

Base turn ILS approach from DC NDB:

Available at ATC discretion only.

When crossing DC NDB fly outbound on track 204° (QDR 204°) and descend to 2500.

At D 10.1 DCN DME turn right (185 KIAS max.) to intercept DCN LOC 043°, then follow ILS.

Holding procedure:

Holding fix: DC NDB.

Right hand holding pattern.

Maximum speed: 220 KIAS

Inbound track: 033°

Outbound track: 213°

Rate of turn: 3°/sec. or 25° bank angle
(whichever requires lesser bank)

Outbound timing: 1 min.

Minimum holding altitude: 5000

4000 for Missed Approach