

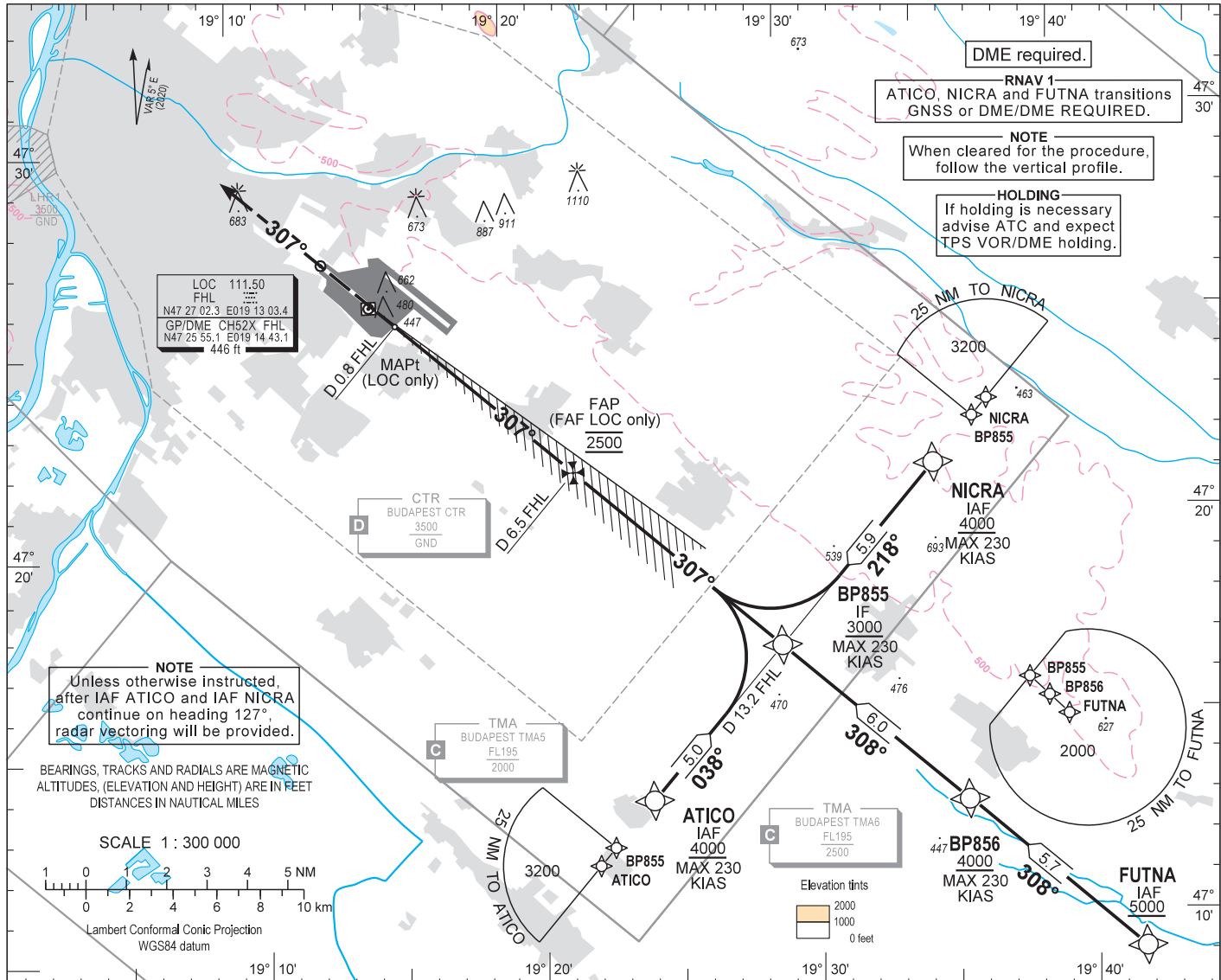
AIP HUNGARY

INSTRUMENT APPROACH CHART - ICAO

AERODROME ELEV 496  
HEIGHTS RELATED TO THR RWY 31L - ELEV 448

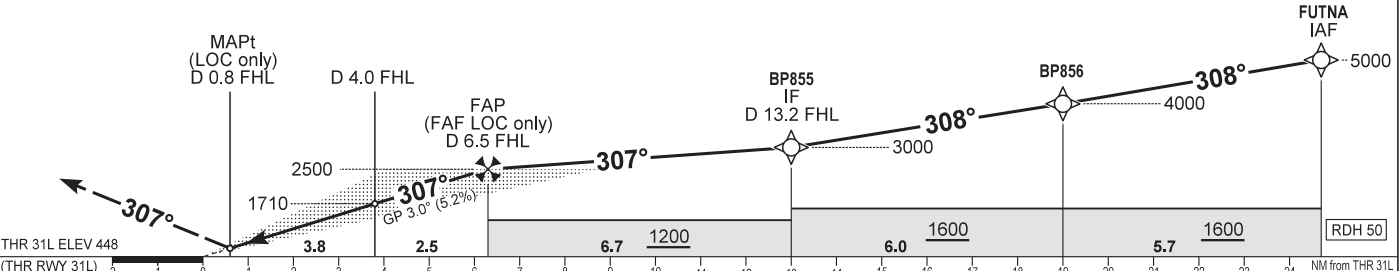
BUDAPEST APP	122.975	123.860	BUDAPEST GROUND	121.910
BUDAPEST TOWER	119.510	118.100	BUDAPEST DELIVERY	134.540
BUDAPEST INFORMATION (NORTH)			ATIS	132.380 (117.300)
				119.350

BUDAPEST/LISZT FERENC  
ILS or LOC RWY 31L  
(ACFT CAT A, B, C, D)



**MISSED APPROACH**  
Climb on RWY heading to 3000. Expect radar vectors.  
RCF: follow missed approach procedure and at D 10.0 NM from FHL on heading 307° turn right to TPS VOR and hold as published on AD 2-LHBP-VOR-31R - 1 chart.

TRANSITION ALTITUDE  
10000



OCA (H)		A	B	C	D	DME FHL	NM	6.0	5.0	4.0	3.0	2.0
		817 (369)	829 (381)	837 (389)	848 (400)							
STRAIGHT-IN APPROACH	CAT I magc 2.5%	613 (165)	626 (178)	634 (186)	644 (196)	DIST THR / RWY 31L	NM	5.8	4.8	3.8	2.8	1.8
	CAT I magc 3.2%	729 (281)	746 (298)	758 (310)	772 (324)	ALTITUDE	ft	2340	2030	1710	1390	1070
	CAT II magc 2.5%	525 (77)	543 (95)	554 (106)	569 (121)	Timing not authorized to define the MAPt.						
	CAT II magc 3.2%	800 (360)	820 (380)	840 (400)	860 (420)	GS	kt	60	90	120	150	180
	LOC	980	1190	1310	1510	FAP/FAF - THR 31L (6.3 NM)	min:sec	6:18	4:12	3:09	2:31	2:06
CIRCLING					Rate of descent (319 ft/NM)	ft/min	320	480	640	800	960	

**AD 2 LHBP INSTRUMENT APPROACH CHART ILS OR LOC RWY 31L**

via FUTNA

PT	WP ID	Role	OverFly	Bearing/ (Len Dur)	Turn Direction	Altitude (FT)	IAS (KT)	VRT ANG	NAV PERF
IF	FUTNA	IAF				+5000			RNAV1
TF	BP856			312.6 T/5.7 NM		+4000	-230		RNAV1
TF	BP855	IF		312.5 T/6.0 NM		+3000	-230		RNAV1
CF	BP854	FAF		312.4 T/6.7 NM		@2500			
CF	RW31L	LTP	Y	312.4 T/6.3 NM		+498		-3.0	
VM				312.4 T		@3000			

via ATICO

PT	WP ID	Role	OverFly	Bearing/ (Len Dur)	Turn Direction	Altitude (FT)	IAS (KT)	VRT ANG	NAV PERF
TF	ATICO	IAF				+4000	-230		RNAV1
TF	BP855	IF		042.5 T/5.0 NM		+3000	-230		RNAV1
CF	BP854	FAF		312.4 T/6.7 NM		@2500			
CF	RW31L	LTP	Y	312.4 T/6.3 NM		+498		-3.0	
VM				312.4 T		@3000			

via NICRA

PT	WP ID	Role	OverFly	Bearing/ (Len Dur)	Turn Direction	Altitude (FT)	IAS (KT)	VRT ANG	NAV PERF
TF	NICRA	IAF				+4000	-230		RNAV1
TF	BP855	IF		222.5T/5.9 NM		+3000	-230		RNAV1
CF	BP854	FAF		312.4 T/6.7 NM		@2500			
CF	RW31L	LTP	Y	312.4 T/6.3 NM		+498		-3.0	
VM				312.4 T		@3000			

WAYPOINT COORDINATES SEE: AD 2.22.