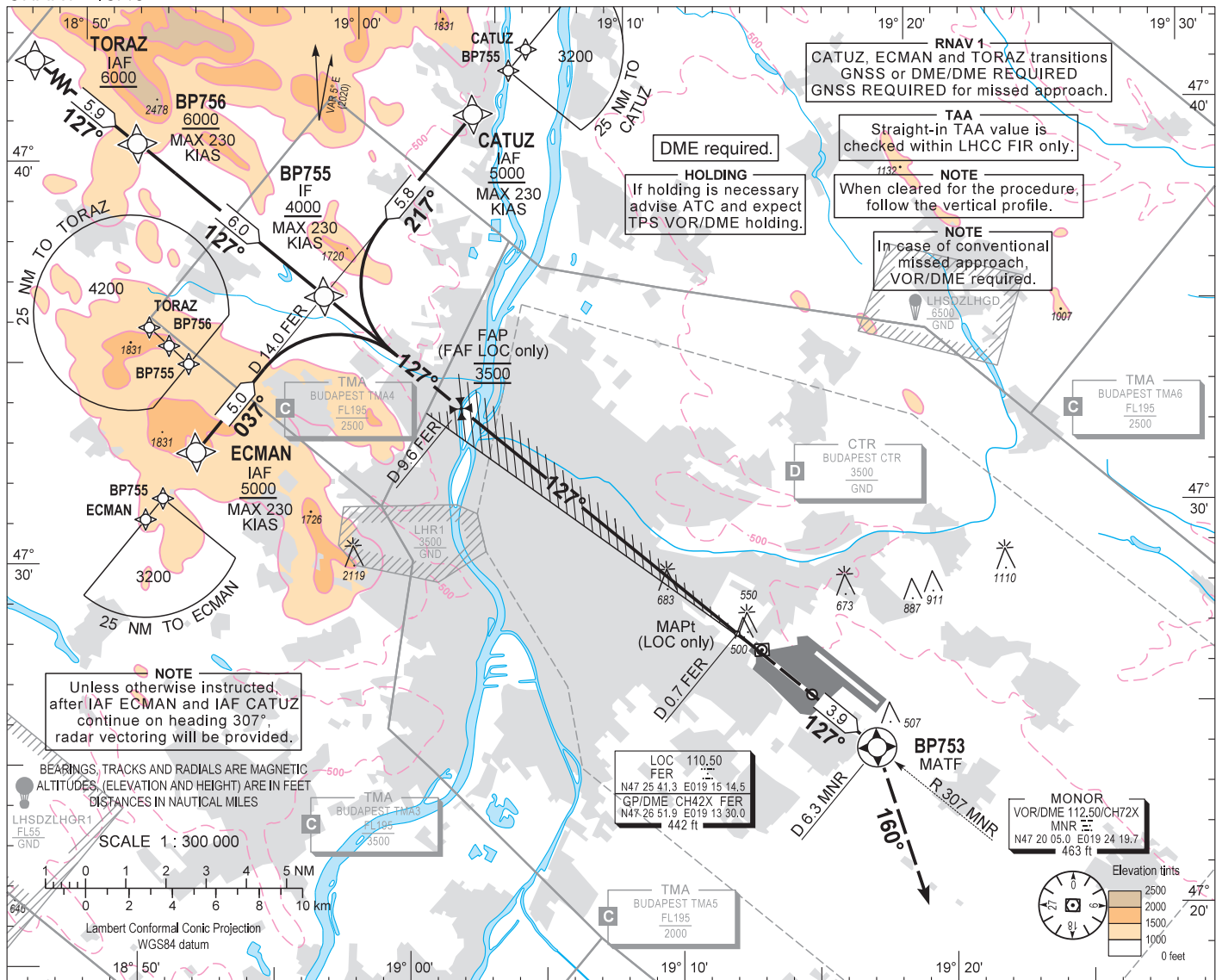


AIP HUNGARY

INSTRUMENT APPROACH CHART - ICAO
AERODROME ELEV 496
HEIGHTS RELATED TO THR RWY 13R - ELEV 448

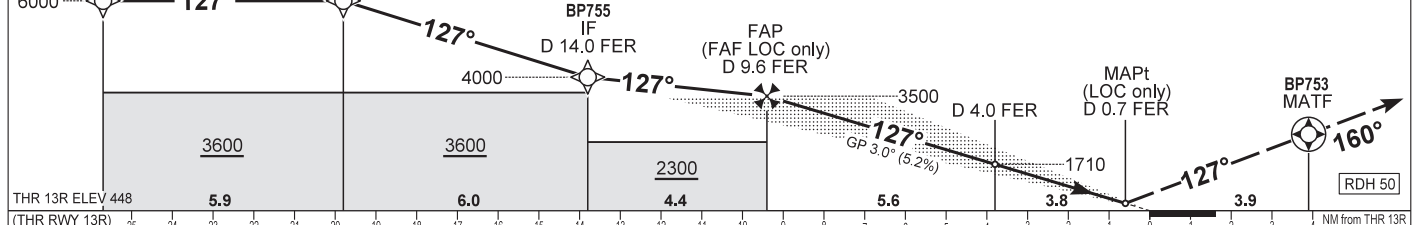
BUDAPEST APP	122.975	123.860	BUDAPEST GROUND	121.910
BUDAPEST TOWER	119.510	118.100	BUDAPEST DELIVERY	134.540
BUDAPEST INFORMATION (NORTH)			ATIS	132.380 (117.300)
				119.350

BUDAPEST/LISZT FERENC
ILS or LOC RWY 13R
(ACFT CAT A, B, C, D)



TRANSITION ALTITUDE 10000

Climb to BP753. At BP753 turn right to heading 160° and continue climb to 3000. Expect radar vectors. MISSED APPROACH (RNAV)
MISSED APPROACH (CONVENTIONAL)
RCF: follow missed approach procedure and at D 13.0 NM from FER on heading 160° turn left to TPS VOR and hold as published on AD 2-LHBP-VOR-13L - 1 chart.



OCA (H)	A				B				C				D			
	1	2	3	4	1	2	3	4	1	2	3	4	1	2	3	4
STRAIGHT-IN APPROACH	CAT I				CAT II				LOC				DME FER			
	634 (186)				532 (84)				940 (500)				NM			
	646 (198)				550 (102)								9.0			
	654 (206)												8.0			
	665 (217)												7.0			
													6.0			
													5.0			
													4.0			
													3.0			
													2.0			
													DIST THR / RWY 13R			
													NM			
													8.8			
													7.8			
													6.8			
													5.8			
													4.8			
													3.8			
													2.8			
													1.8			
													ALTITUDE			
													ft			
													3300			
													2980			
													2660			
													2340			
													2030			
													1710			
													1390			
													1070			
													Timing not authorized to define the MAPt.			
													GS			
													kt			
													60			
													90			
													120			
													150			
													180			
													FAP/FAF - THR 13R (9.4 NM)			
													min:sec			
													9:24			
													6:16			
													4:42			
													3:46			
													3:08			
													Rate of descent (319 ft/NM)			
													ft/min			
													320			
													480			
													640			
													800			
													960			

AD 2 LHBP INSTRUMENT APPROACH CHART ILS OR LOC RWY 13R

via TORAZ

PT	WP ID	Role	OverFly	Bearing/ (Len Dur)	Turn Direction	Altitude (FT)	IAS (KT)	VRT ANG	NAV PERF
IF	TORAZ	IAF				+6000			RNAV1
TF	BP756			131.7 T/5.9 NM		+6000	-230		RNAV1
TF	BP755	IF		132.3 T/6.0 NM		+4000	-230		RNAV1
CF	BP754	FAF		132.4 T/4.4 NM		@3500			
CF	RW13R	LTP	Y	132.3 T/9.4 NM		+498		-3.0	
TF	BP753	MATF	Y	132.4 T/3.9 NM					RNP APCH
VM				165.0 T		@3000			

via CATUZ

PT	WP ID	Role	OverFly	Bearing/ (Len Dur)	Turn Direction	Altitude (FT)	IAS (KT)	VRT ANG	NAV PERF
IF	CATUZ	IAF				+5000	-230		RNAV1
TF	BP755	IF		222.3 T/5.8 NM		+4000	-230		RNAV1
CF	BP754	FAF		132.4 T/4.4 NM		@3500			
CF	RW13R	LTP	Y	132.3 T/9.4 NM		+498		-3.0	
TF	BP753	MATF	Y	132.4 T/3.9 NM					RNP APCH
VM				165.0 T		@3000			

via ECMAN

PT	WP ID	Role	OverFly	Bearing/ (Len Dur)	Turn Direction	Altitude (FT)	IAS (KT)	VRT ANG	NAV PERF
IF	ECMAN	IAF				+5000	-230		RNAV1
TF	BP755	IF		042.4 T/5.0 NM		+4000	-230		RNAV1
CF	BP754	FAF		132.4 T/4.4 NM		@3500			
CF	RW13R	LTP	Y	132.3 T/9.4 NM		+498		-3.0	
TF	BP753	MATF	Y	132.4 T/3.9 NM					RNP APCH
VM				165.0 T		@3000			

WAYPOINT COORDINATES SEE: AD 2.22.