

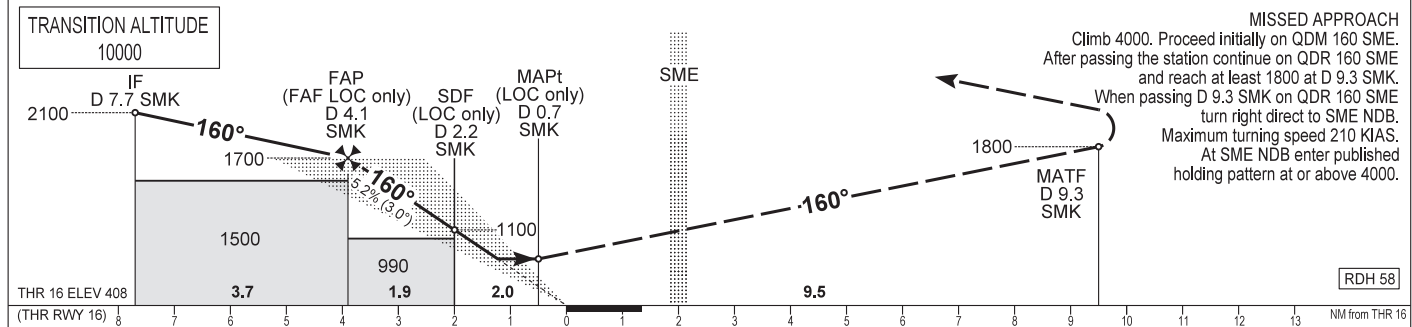
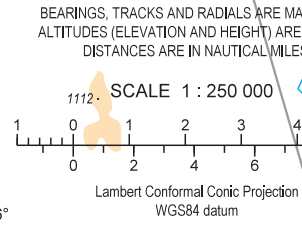
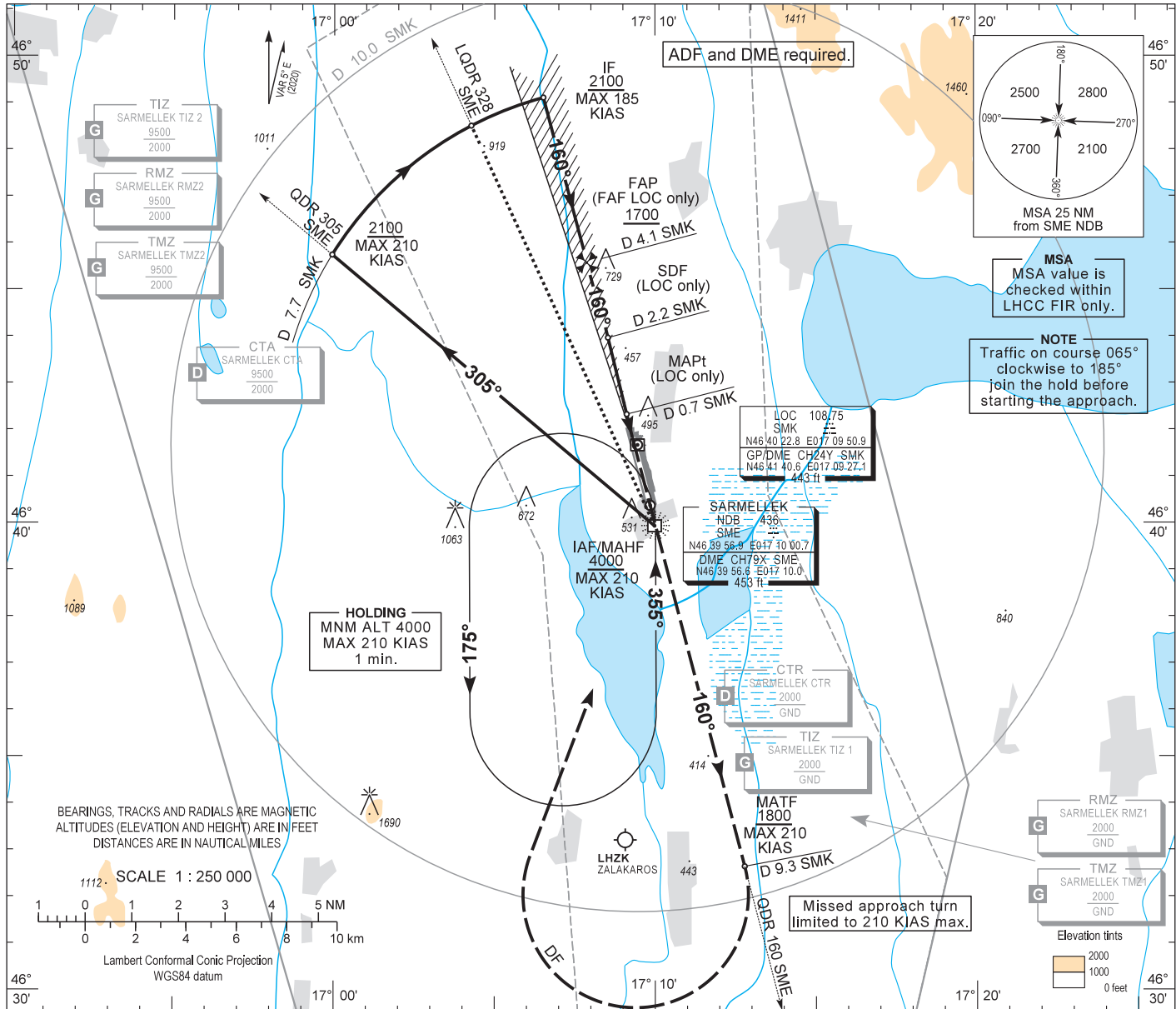
AIP HUNGARY

INSTRUMENT APPROACH CHART - ICAO

AERODROME ELEV 408
HEIGHTS RELATED TO THR RWY 16 - ELEV 408

BALATON TOWER 134.585
BALATON INFO 134.585
BUDAPEST INFORMATION (WEST) 125.500

HÉVÍZ/BALATON
ILS or LOC RWY 16
(ACFT CAT A, B, C, D)



OCA (OCH)		A	B	C	D	DIST THR / RWY 16						
STRAIGHT-IN APPROACH	Cat. I, Press. ALT	600 (192)	612 (204)	620 (212)	631 (223)	NM	3.9	3.0	2.0	1.0		
	LOC only	720 (320)	740 (340)	760 (360)		ft	1700	1420	1100	780		
CIRCLING APPROACH	ft AMSL	840	980	NOT AUTHORIZED	NOT AUTHORIZED	Timing not authorized to define the MAPt.						
	VIS. m	1900	2800			GROUND SPEED	kt	60	90	120	150	180
						FAF - MAPt 3.9 NM	min:sec	3:54	2:36	1:57	1:34	1:18
						Rate of descent (319 ft/NM)	ft/min	320	480	640	800	960

AD 2 LHSM INSTRUMENT APPROACH CHART ILS OR LOC RWY 16

ILS approach procedure:

Initial altitude at or above 4000.
Leave SME NDB on QDR 305 SME and descend 2100.
At D 7.7 SMK turn right and join CW D 7.7 SMK DME arc.
After crossing LQDR 328 SME leading QDR turn right and intercept SMK LOC 160° (final track), descend 1700.
Glide path interception at D 4.1 SMK DME (FAF LOC only), then follow ILS.

Holding procedure:

Holding fix: SME NDB.
Left hand holding pattern.
Maximum speed: 210 KIAS
Inbound track: 355°
Outbound track: 175°
Rate of turn: 3°/sec. or 25° bank angle
(whichever requires lesser bank)
Outbound timing: 1 min
Minimum holding altitude: 4000