

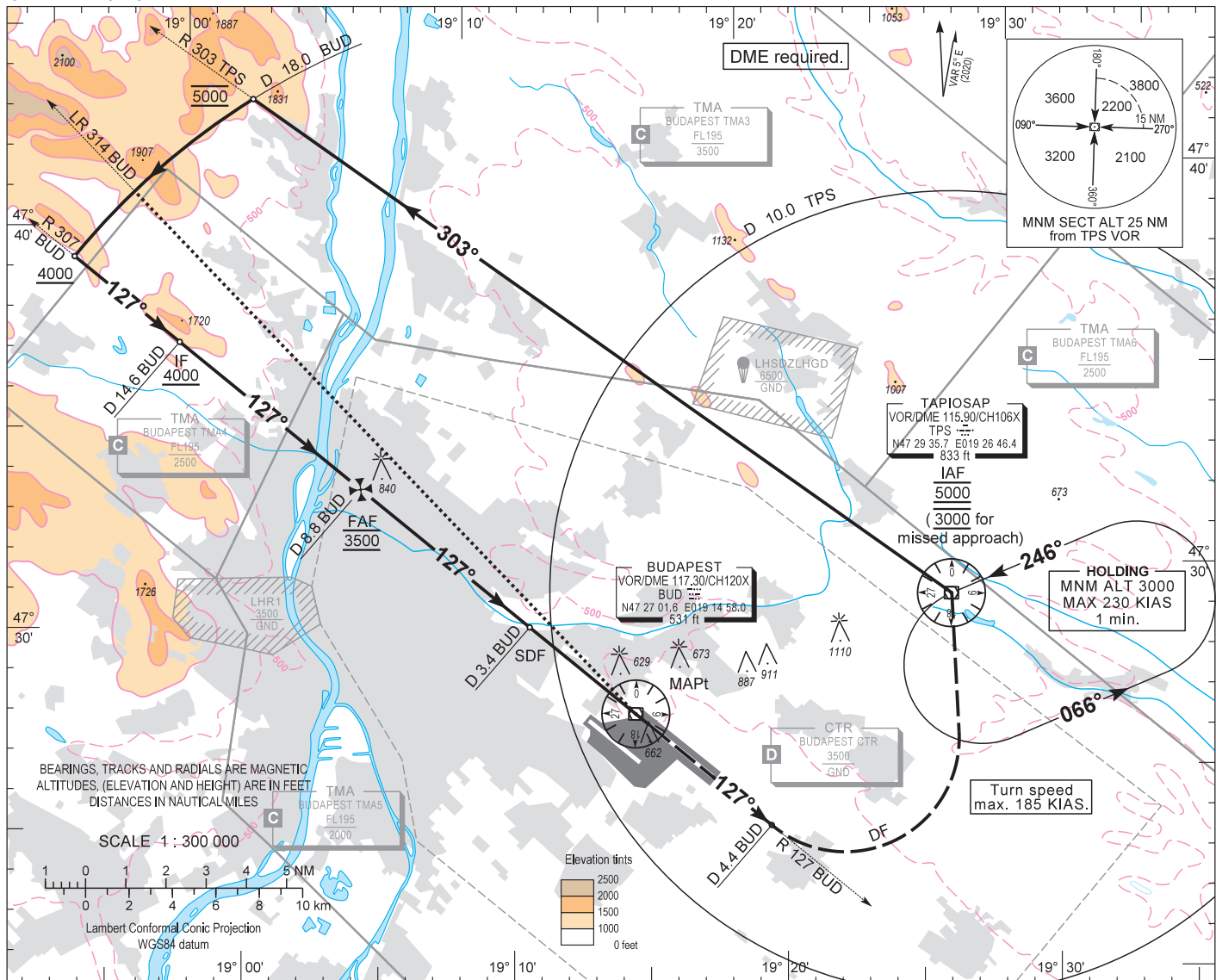
AIP HUNGARY

INSTRUMENT APPROACH CHART - ICAO

AERODROME ELEV 496  
HEIGHTS RELATED TO THR RWY 13L - ELEV 496

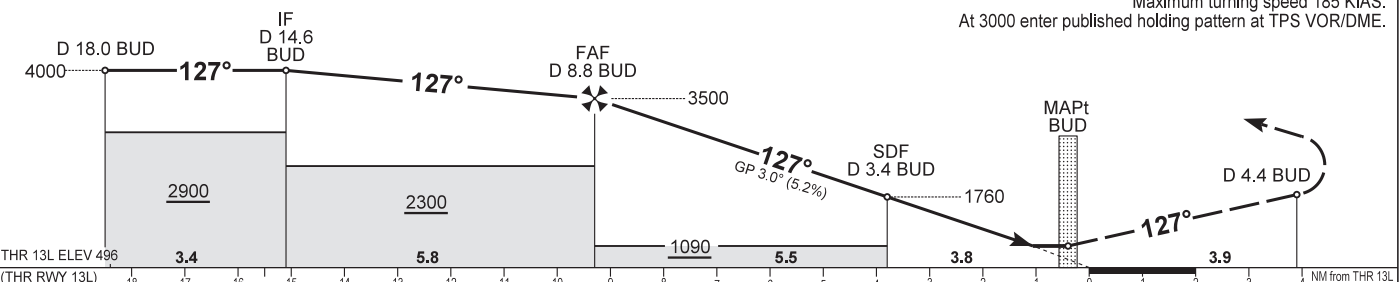
BUDAPEST APP	122.975	123.860	BUDAPEST GROUND	121.910
BUDAPEST TOWER	118.100	119.510	BUDAPEST DELIVERY	134.540
BUDAPEST INFORMATION (NORTH)			ATIS	132.380 (117.300)
			BUDAPEST INFORMATION (SOUTH)	119.350

BUDAPEST/LISZT FERENC  
VOR RWY 13L  
(ACFT CAT A, B, C, D)



TRANSITION ALTITUDE  
10000

MISSED APPROACH  
Climb to 3000 and continue on R 127 BUD outbound.  
When passing D 4.4 BUD on R 127 BUD turn left direct to TPS VOR/DME.  
Maximum turning speed 185 KIAS.  
At 3000 enter published holding pattern at TPS VOR/DME.



CHANGE: LHSZLHGD / GODOLLO	OCA (H)	A	B	C	D	DME BUD	NM	8.0	7.0	6.0	5.0	4.0	3.0	2.0	1.0
	STRAIGHT-IN APPROACH	880 (390)				DIST THR / RWY 13L	NM	8.5	7.5	6.5	5.5	4.5	3.5	2.5	1.5
	CIRCLING	980	1190	1310	1510	ALTITUDE	ft	3250	2930	2620	2300	1980	1660	1340	1020
						Timing not authorized to define the MAPt.									

GS	kt	60	90	120	150	180
FAF - THR 13L (9.3 NM)	min:sec	9:18	6:12	4:39	3:43	3:06
Rate of descent (319 ft/NM)	ft/min	320	480	640	800	960

## AD 2 LHBP INSTRUMENT APPROACH CHART VOR RWY 13L

### VOR approach procedure:

Initial altitude: 5000.

Leave TPS on R 303 TPS and maintain 5000.

When reaching D 18.0 BUD turn left and join D 18.0 BUD DME arc CCW and descend 4000.  
After crossing R 314 BUD leading radial turn left and intercept R 307 BUD (final track) inbound.  
When crossing D 8.8 BUD at 3500, descend to published minimum altitude.