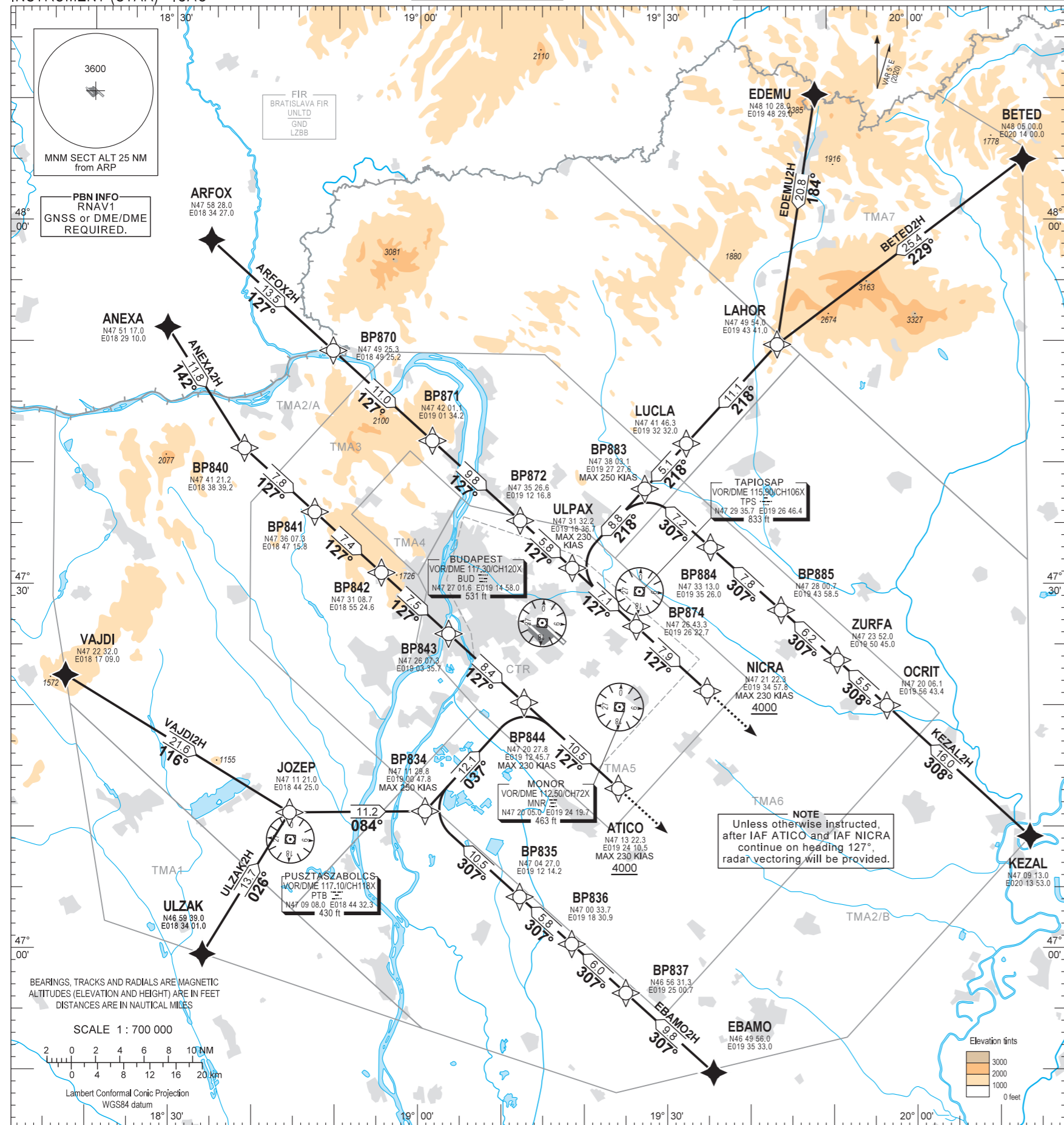


STANDARD ARRIVAL CHART - INSTRUMENT (STAR) - ICAO

TRANSITION ALTITUDE  
10000

BUDAPEST APP 122.975 123.860 BUDAPEST GROUND 121.910  
BUDAPEST DELIVERY 119.510 BUDAPEST DELIVERY 134.540  
BUDAPEST TOWER 118.100 ATIS 132.380 (117.300)  
BUDAPEST INFORMATION (NORTH) 119.350

BUDAPEST/LISZT FERENC  
RNAV RWY 31L, 31R  
ANEXA2H, ARFOX2H, ULZAK2H, BETED2H  
EBAMO2H, EDEMU2H, KEZAL2H, VAJDI2H



NAME	PROCEDURE	RESTRICTIONS
ANEXA2H	From ANEXA to BP840, to BP841, to BP842, to BP843, to BP844, to ATICO at or above 4000.	MAX 230 KIAS at ATICO and NICRA.
VAJDI2H	From VAJDI to JOZEP. To BP834, maximum speed 250 KIAS. To BP844, maximum speed 230 KIAS. To ATICO at or above 4000.	
ULZAK2H	From ULZAK to JOZEP. To BP834, maximum speed 250 KIAS. To BP844, maximum speed 230 KIAS. To ATICO at or above 4000.	
EBAMO2H	From EBAMO to BP837, to BP836, to BP835. To BP834, maximum speed 250 KIAS. To BP844, maximum speed 230 KIAS. To ATICO at or above 4000.	
KEZAL2H	From KEZAL to OCRIT, to ZURFA, to BP885, to BP884. To BP883, maximum speed 250 KIAS. To ULPAX, maximum speed 230 KIAS. To BP874, to NICRA at or above 4000.	
BETED2H	From BETED to LAHOR, to LUCLA, to BP883. To ULPAX, maximum speed 230 KIAS. To BP874, to NICRA at or above 4000.	
EDEMU2H	From EDEMU to LAHOR, to LUCLA, to BP883. To ULPAX, maximum speed 230 KIAS. To BP874, to NICRA at or above 4000.	
ARFOX2H	From ARFOX to BP870, BP871, to BP872, to ULPAX, to BP874, to NICRA at or above 4000.	

BUDAPEST TMA						BUDAPEST CTR
TMA1		TMA3		TMA6		CTR
TMA2/A		TMA4		TMA7		
TMA2/B		TMA5				

THIS PAGE IS INTENTIONALLY LEFT BLANK