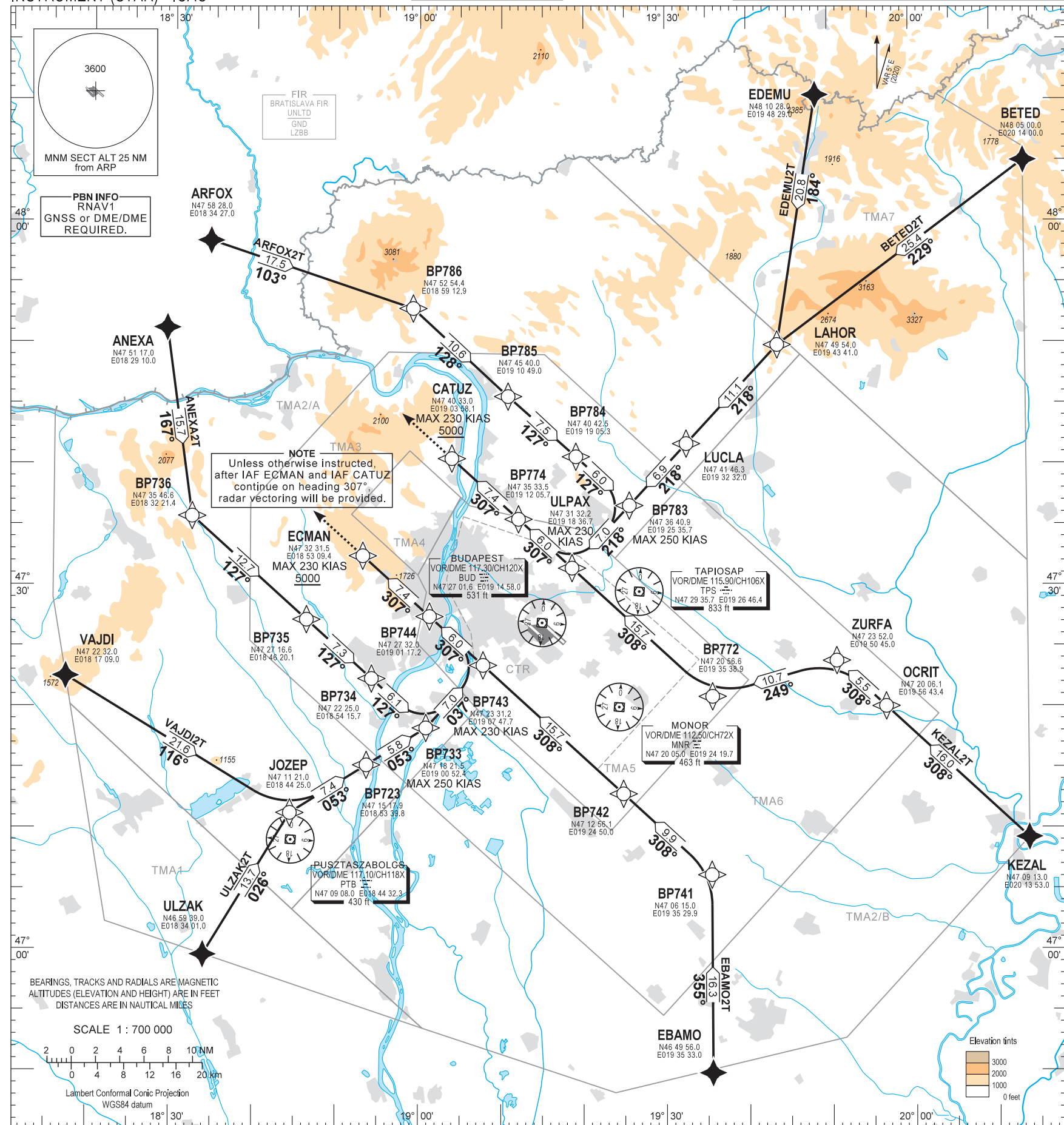


STANDARD ARRIVAL CHART - INSTRUMENT (STAR) - ICAO

TRANSITION ALTITUDE
10000

BUDAPEST APP 122.975 123.860 BUDAPEST GROUND 121.910
BUDAPEST DELIVERY 134.540
BUDAPEST TOWER 118.100 ATIS 132.380 (117.300)
BUDAPEST INFORMATION (NORTH) 119.350

BUDAPEST/LISZT FERENC
RNAV Rwy 13L, 13R
ANEXA2T, ARFOX2T, ULZAK2T, BETED2T
EBAMO2T, EDEMU2T, KEZAL2T, VAJDI2T



NAME	PROCEDURE	RESTRICTIONS
ANEXA2T	From ANEXA to BP736, to BP735, to BP734. To BP733, maximum speed 250 KIAS. To BP743, maximum speed 230 KIAS. To BP744, to ECMAN at or above 5000.	MAX 230 KIAS at ECMAN and CATUZ.
VAJDI2T	From VAJDI to JOZEP, to BP723. To BP733, maximum speed 250 KIAS. To BP743, maximum speed 230 KIAS. To BP744, to ECMAN at or above 5000.	
ULZAK2T	From ULZAK to JOZEP, to BP723. To BP733, maximum speed 250 KIAS. To BP743, maximum speed 230 KIAS. To BP744, to ECMAN at or above 5000.	
EBAMO2T	From EBAMO to BP741, to BP742, to BP743, to BP744, to ECMAN at or above 5000.	
KEZAL2T	From KEZAL to OCRIT, to ZURFA, to BP772, to ULPAX, to BP774, to CATUZ at or above 5000.	
BETED2T	From BETED to LAHOR, to LUCLA, to BP783. To ULPAX, maximum speed 230 KIAS. To BP774, to CATUZ at or above 5000.	
EDEMU2T	From EDEMU to LAHOR, to LUCLA, to BP783. To ULPAX, maximum speed 230 KIAS. To BP774, to CATUZ at or above 5000.	
ARFOX2T	From ARFOX to BP786, to BP785, to BP784. To BP783, maximum speed 250 KIAS. To ULPAX, maximum speed 230 KIAS. To BP774, to CATUZ at or above 5000.	

BUDAPEST TMA						BUDAPEST CTR	
TMA1		TMA3		TMA6		CTR	
TMA2/A		TMA4		TMA7			
TMA2/B		TMA5					

THIS PAGE IS INTENTIONALLY LEFT BLANK