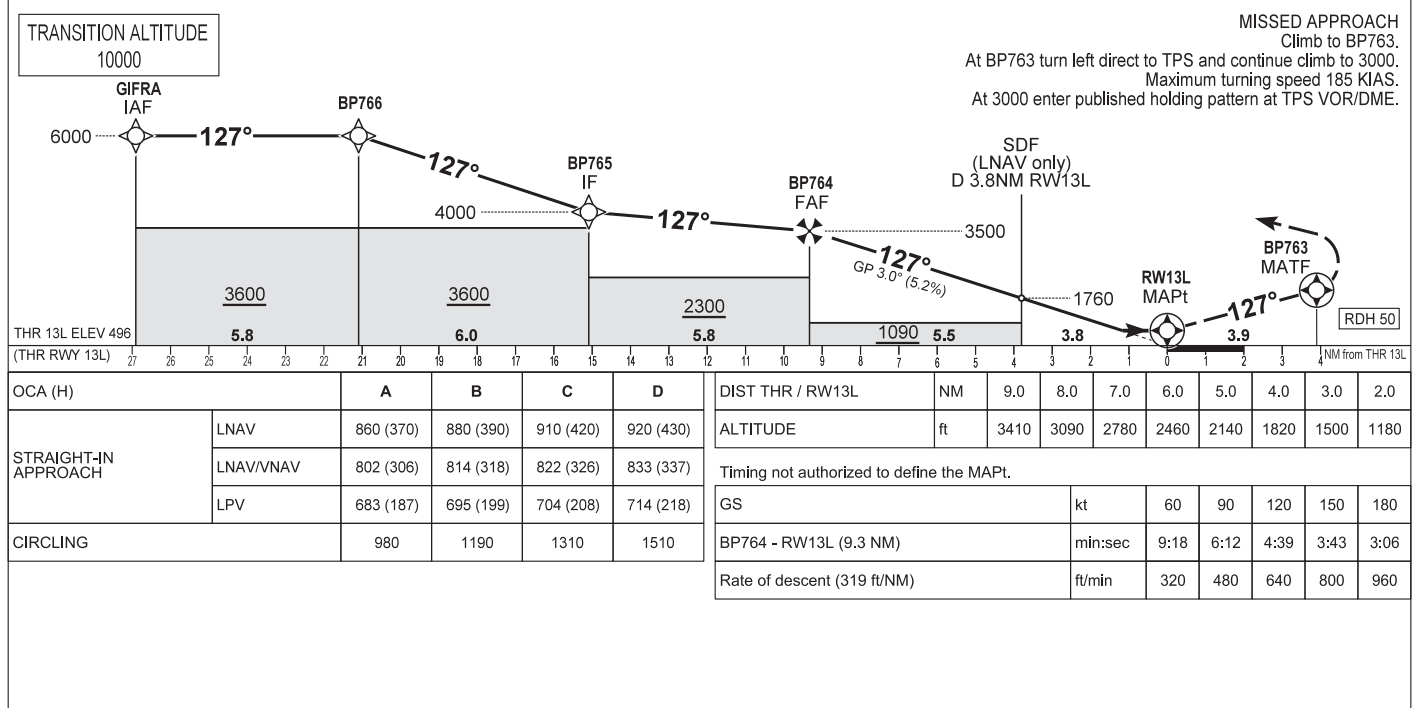
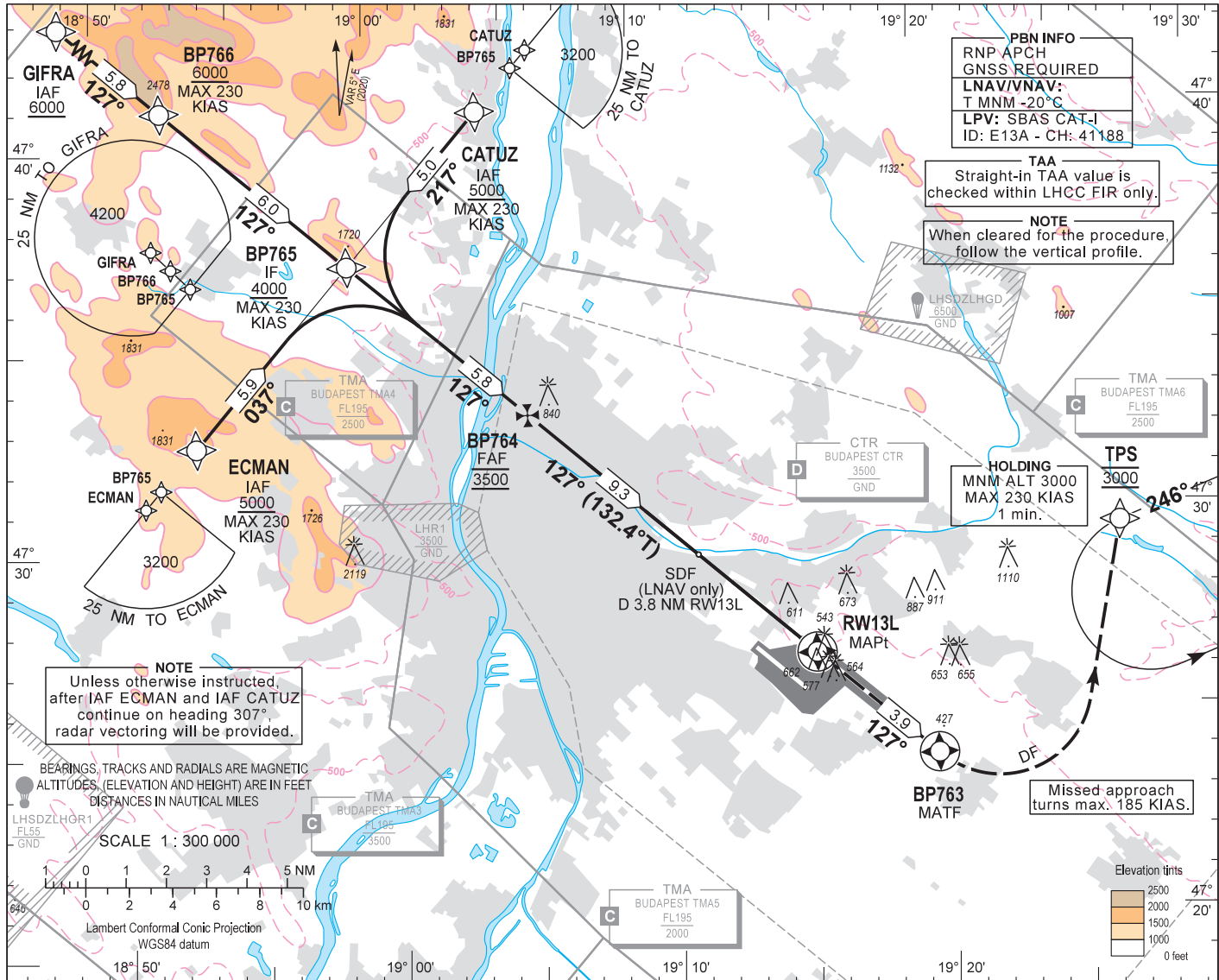


AIP HUNGARY

INSTRUMENT APPROACH CHART - ICAO  
AERODROME ELEV 496  
HEIGHTS RELATED TO THR RWY 13L - ELEV 496

BUDAPEST APP 122.975 123.860  
BUDAPEST GROUND 121.910  
BUDAPEST TOWER 119.510  
BUDAPEST DELIVERY 134.540  
BUDAPEST INFORMATION (NORTH) 118.100  
ATIS 132.380 (117,300)  
119.350

BUDAPEST/LISZT FERENC  
RNP RWY 13L  
(ACFT CAT A, B, C, D)



CHANGE: LHSDZLHGD / GODOLLO

OCA (H)	THR 13L ELEV 496 (THR RWY 13L)				DIST THR / RWY13L	NM	9.0	8.0	7.0	6.0	5.0	4.0	3.0	2.0	
	A	B	C	D											
STRAIGHT-IN APPROACH	LNAV	860 (370)	880 (390)	910 (420)	920 (430)	ALTITUDE	ft	3410	3090	2780	2460	2140	1820	1500	1180
	LNAV/VNAV	802 (306)	814 (318)	822 (326)	833 (337)		Timing not authorized to define the MAPt.	GS	kt	60	90	120	150	180	
	LPV	683 (187)	695 (199)	704 (208)	714 (218)				BP764 - RWY13L (9.3 NM)	min:sec	9:18	6:12	4:39	3:43	3:06
CIRCLING	980	1190	1310	1510	Rate of descent (319 ft/NM)	ft/min	320	480	640	800	960				

## AD 2 LHBP INSTRUMENT APPROACH CHART RNP RWY 13L

### via GIFRA

PT	WP ID	Role	OverFly	Bearing/ (Len Dur)	Turn Direction	Altitude (FT)	IAS (KT)	VRT ANG	NAV PERF
IF	GIFRA	IAF				+6000			RNP APCH
TF	BP766			132.1 T/5.8 NM		+6000	-230		RNP APCH
TF	BP765	IF		132.2 T/6.0 NM		+4000	-230		RNP APCH
TF	BP764	FAF		132.2 T/5.8 NM		@3500			RNP APCH
TF	RW13L	MAPt	Y	132.4 T/9.3 NM		+546		-3.0	RNP APCH
TF	BP763	MATF	Y	132.4 T/3.9 NM			-185		RNP APCH
DF	TPS				L	@3000	-185		RNP APCH
HM	TPS	MAHF		251.0 T/1 min	L	@3000	-230		RNP APCH

### via ECMAN

PT	WP ID	Role	OverFly	Bearing/ (Len Dur)	Turn Direction	Altitude (FT)	IAS (KT)	VRT ANG	NAV PERF
IF	ECMAN	IAF				+5000	-230		RNP APCH
TF	BP765	IF		042.3 T/5.9 NM		+4000	-230		RNP APCH
TF	BP764	FAF		132.2 T/5.8 NM		@3500			RNP APCH
TF	RW13L	MAPt	Y	132.4 T/9.3 NM		+546		-3.0	RNP APCH
TF	BP763	MATF	Y	132.4 T/3.9 NM			-185		RNP APCH
DF	TPS				L	@3000	-185		RNP APCH
HM	TPS	MAHF		251.0 T/1 min	L	@3000	-230		RNP APCH

### via CATUZ

PT	WP ID	Role	OverFly	Bearing/ (Len Dur)	Turn Direction	Altitude (FT)	IAS (KT)	VRT ANG	NAV PERF
IF	CATUZ	IAF				+5000	-230		RNP APCH
TF	BP765	IF		222.3T/5.0 NM		+4000	-230		RNP APCH
TF	BP764	FAF		132.2 T/5.8 NM		@3500			RNP APCH
TF	RW13L	MAPt	Y	132.4 T/9.3 NM		+546		-3.0	RNP APCH
TF	BP763	MATF	Y	132.4 T/3.9 NM			-185		RNP APCH
DF	TPS				L	@3000	-185		RNP APCH
HM	TPS	MAHF		251.0 T/1 min	L	@3000	-230		RNP APCH

### SBAS FAS Data Block Coding Data

WAYPOINT COORDINATES SEE: AD 2.22.

#### FAS-DB (CRC wrapped data)

Operation type	0
SBAS provider ID	1
Airport identifier	LHBP
RWY	13L
Approach performance designator	0
Route indicator	
Reference path data selector	0
Reference path identifier	E13A
LTP/FTP latitude	472643.5200N
LTP/FTP longitude	0191527.1800E
LTP/FTP ellipsoidal height (m)	195.3
FPAP latitude	472521.5520N
FPAP longitude	0191739.6190E
Threshold crossing height (TCH)	15
TCH units	1
Glide path angle (degrees)	3.00
Course width at threshold (m)	105.00
Length offset (m)	56
Horizontal alert limit (m)	40.0
Vertical alert limit (m)	35.0
Computed Data Block	10 10 02 08 0C CD 00 00 01 33 31 05 80 82 5C 14 98 B2 43 08 A1 1B A0 7F FD AE 0A 04 2C 81 2C 01 64 07 C8 AF B7 29 71 10
Computed CRC	B7297110
<b>FAS-DB (not CRC wrapped)</b>	
ICAO code	LH
LTP/FTP Orthometric height (m)	151.3