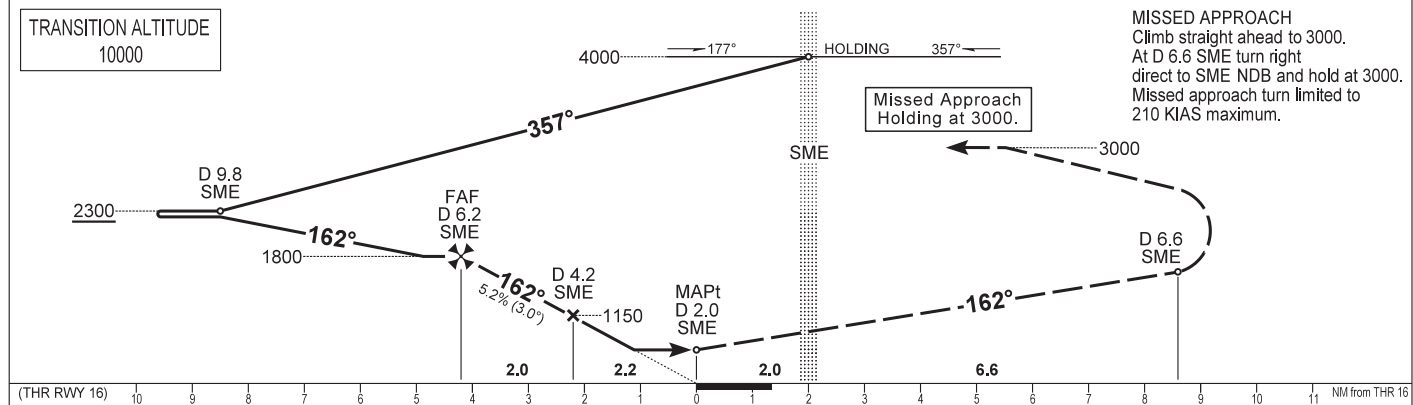
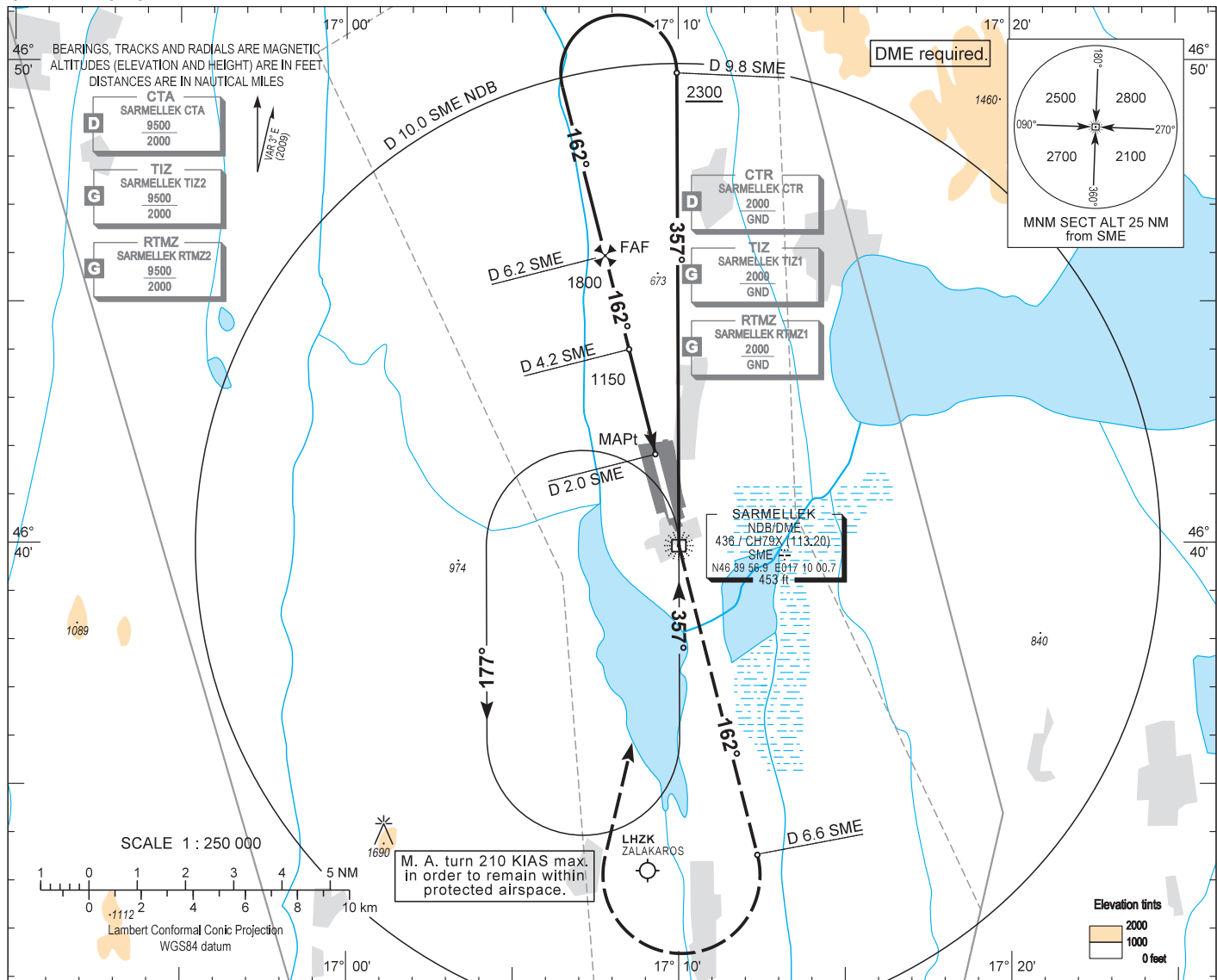


AIP HUNGARY

INSTRUMENT APPROACH CHART - ICAO  
AERODROME ELEV 408  
HEIGHTS RELATED TO THR RWY 16 - ELEV 408

BALATON TOWER	134.585
BALATON INFO	134.585
BUDAPEST INFORMATION (WEST)	125.500

HÉVÍZ/BALATON  
NDB, RWY 16  
(ACFT CAT A, B, C, D)



TRANSITION ALTITUDE		10000				GROUND SPEED		kt	60	90	120	150	180
OCA (OCH)		A	B	C	D	FAF - MAPt 4.18 NM		MIN:sec	4:11	2:47	2:06	1:40	1:24
STRAIGHT-IN APPROACH		770 (360)											
CIRCLING APPROACH		ft AMSL	825	1030	1410								
		VIS. m	1900	2800	3700								

## AD 2 LHSM INSTRUMENT APPROACH CHART NDB RWY 16

### Approach from SME NDB:

Initial altitude: 4000.

Fly outbound on QDR 357 SME for 3 minutes or D 9.8 SME DME (whichever comes first) and descend to 2300.

Turn left for final (185 KIAS max.) to QDM 162 SME inbound, then descend to 1800.

At D 6.2 SME DME descend to 1150.

At D 4.2 SME DME descend to 770.

### Holding procedure:

Holding fix: SME NDB.

Left hand holding pattern.

Inbound track: 357°

Outbound track: 177°

Rate of turn: 3°/sec. or 25° bank angle

(whichever requires lesser bank)

Outbound timing: 1 min

Minimum holding altitude: 4000

3000 for Missed Approach

Final approach descent: 3.00°