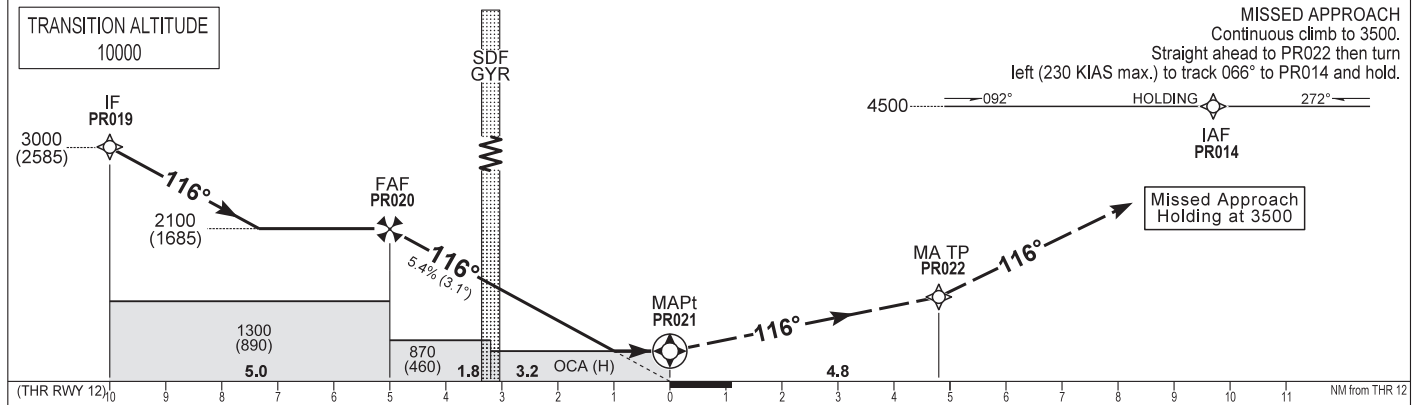
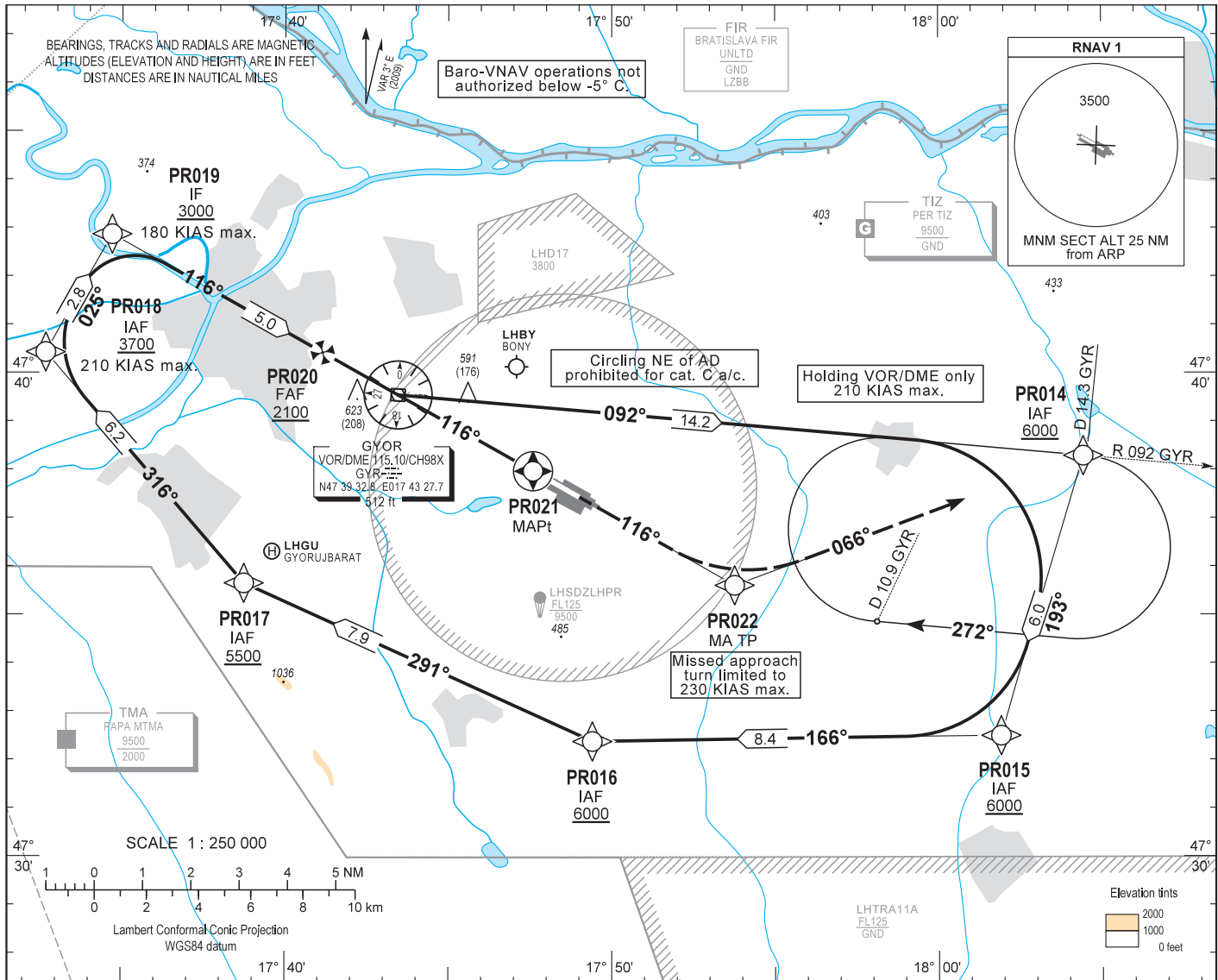


AIP HUNGARY

INSTRUMENT APPROACH CHART - ICAO
AERODROME ELEV 426
HEIGHTS RELATED TO THR RWY 12 - ELEV 415

PÉR INFO 129.910
BUDAPEST INFORMATION (WEST) 125.500

GYŐR/PÉR
RNP RWY 12
(ACFT CAT A, B, C)



| | | | | |
|----------------------|-------------|-----------|-----------|-----------------------------|
| OCA (H) | | A | B | C |
| STRAIGHT-IN APPROACH | LNAV | 770 (360) | | |
| | LNAV / VNAV | 730 (320) | | |
| CIRCLING APPROACH | ft AMSL | 890 (480) | 930 (520) | 1140 (730) SW of AD only |
| | VIS. m | 1900 | 2800 | 3700 |

| | | | | | | |
|-----------------------------|----|--------|--------|--------|-------|-------|
| CDFA with distance to PR021 | NM | 5.0 | 4.0 | 3.0 | 2.0 | 1.0 |
| ALT | ft | 2100 | 1780 | 1460 | 1130 | 810 |
| (HGT) | ft | (1690) | (1370) | (1050) | (720) | (400) |

Timing not authorized to define the MAPt.

| | | | | | |
|-------------------|---------|------|------|------|------|
| GROUND SPEED | kt | 70 | 100 | 130 | 160 |
| FAF - MAPt 5.0 NM | MIN:sec | 4:17 | 3:00 | 2:18 | 1:53 |
| VSP | ft/min | 380 | 540 | 710 | 870 |

AD 2 LHPR INSTRUMENT APPROACH CHART RNP RWY 12

| Serial Number | Path Descriptor | Waypoint Identifier | Fly-over | Course °M (°T) | Magnetic Variation (2009) | Distance (NM) | Turn Direction | Altitude (ft) | Speed (KIAS) | VPA/TCH | Navigation Specification |
|---------------|-----------------|---------------------|----------|----------------|---------------------------|---------------|----------------|---------------|--------------|----------|--------------------------|
| 001 | IF | GYR | | | +3.4 | | | +6000 | | | RNP APCH |
| 002 | TF | PR014 | - | 092 (095.0) | +3.4 | 14.2 | - | +6000 | | | RNP APCH |
| 003 | TF | PR015 | - | 193 (196.6) | +3.4 | 6.0 | - | +6000 | | | RNP APCH |
| 004 | TF | PR016 | - | 266 (269.1) | +3.4 | 8.4 | - | +6000 | | | RNP APCH |
| 005 | TF | PR017 | - | 291 (294.5) | +3.4 | 7.9 | - | +5500 | | | RNP APCH |
| 006 | TF | PR018 | - | 316 (319.5) | +3.4 | 6.2 | - | +3700 | -210 | | RNP APCH |
| 007 | TF | PR019 | - | 026 (029.5) | +3.4 | 2.8 | - | +3000 | -180 | | RNP APCH |
| 008 | TF | PR020 | - | 116 (119.5) | +3.4 | 5.0 | - | +2100 | | | RNP APCH |
| 009 | TF | PR021 | Y | 116 (119.5) | +3.4 | 5.0 | - | @770 | | -3.08/49 | RNP APCH |
| 010 | TF | PR022 | - | 116 (119.5) | +3.4 | 4.8 | - | - | -230 | | RNP APCH |
| 011 | HM | PR014 | - | 066 (069.5) | +3.4 | 7.7 | - | +3500 | | | RNP APCH |

**WAYPOINT COORDINATES
AD 2-LHPR-RNP-12**

| WAYPOINT | LATITUDE | LONGITUDE | REMARK |
|----------|-------------|--------------|--------|
| PR014 | N47 38 17.4 | E018 04 25.7 | IAF |
| PR015 | N47 32 30.2 | E018 01 54.4 | IAF |
| PR016 | N47 32 22.9 | E017 49 24.5 | IAF |
| PR017 | N47 35 39.3 | E017 38 44.7 | IAF |
| PR018 | N47 40 25.6 | E017 32 40.2 | IAF |
| PR019 | N47 42 52.1 | E017 34 41.8 | IF |
| PR020 | N47 40 25.3 | E017 41 09.0 | FAF |
| PR021 | N47 37 58.3 | E017 47 35.6 | MAPt |
| PR022 | N47 35 36.7 | E017 53 45.6 | MA TP |

Approach holding procedure:

Holding fix: PR014.
 Maximum speed: 210 KIAS
 Inbound track: 092°
 Outbound track: 272°
 Turns: Right
 Outbound timing: 1 min.
 Minimum holding altitude: 4500 (3500 for Missed Approach)
 MOCA: 2000
 Entry: Sector 1 (parallel) and Sector 2 (offset) entries prohibited

Final approach descent: 3.10°