

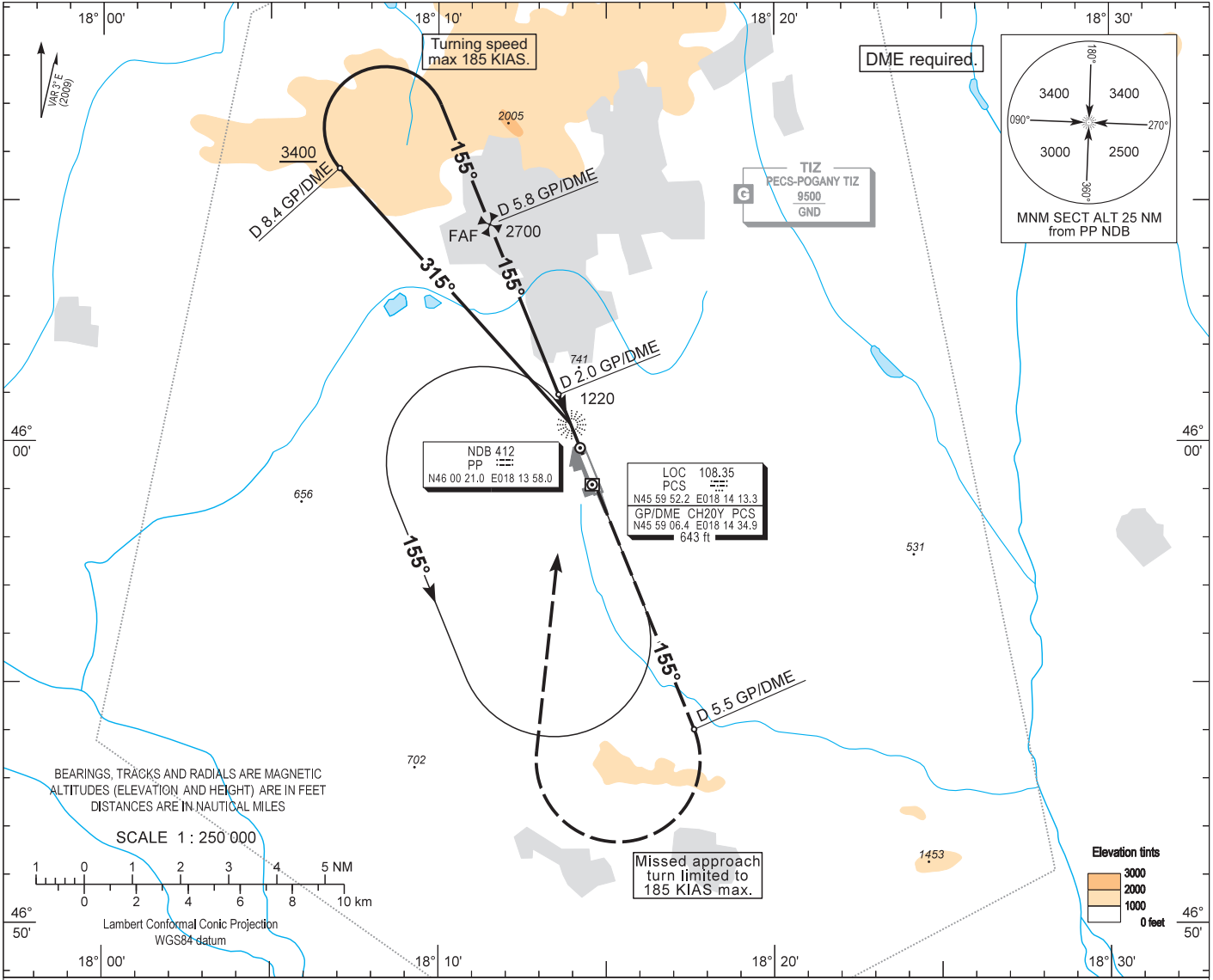
AIP HUNGARY

INSTRUMENT  
APPROACH  
CHART - ICAO

AERODROME ELEV 651  
HEIGHTS RELATED TO  
THR RWY 16 - ELEV 651

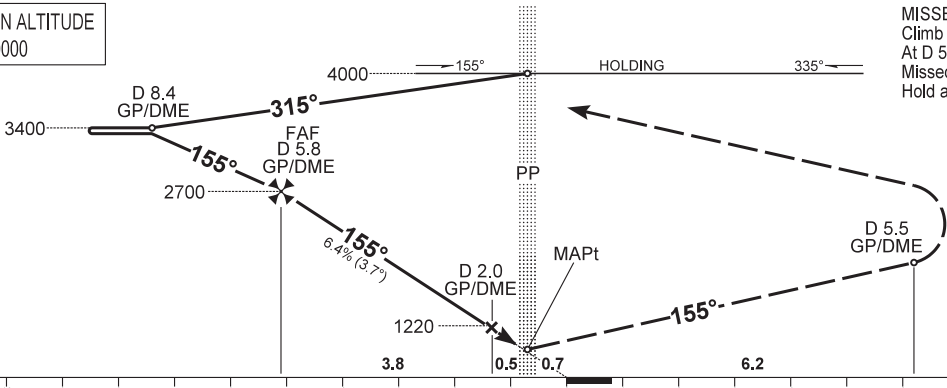
POGÁNY INFO 126.915  
BUDAPEST INFORMATION (WEST) 125.500

PÉCS/POGÁNY  
NDB RWY 16  
(ACFT CAT A, B, C, D)



TRANSITION ALTITUDE  
10000

MISSED APPROACH  
Climb straight ahead to 4000.  
At D 5.5 PCS DME turn right inbound PP NDB.  
Missed approach turn limited to 185 KIAS maximum.  
Hold at 4000 over 155° PP NDB.



|                      |         |   |      |      |            |      |                    |   |   |   |   |         |    |   |   |   |              |      |      |      |      |     |                |
|----------------------|---------|---|------|------|------------|------|--------------------|---|---|---|---|---------|----|---|---|---|--------------|------|------|------|------|-----|----------------|
| (THR RWY 16)         | 10      | 9 | 8    | 7    | 6          | 5    | 4                  | 3 | 2 | 1 | 0 | 1       | 2  | 3 | 4 | 5 | 6            | 7    | 8    | 9    | 10   | 11  | NM from THR 16 |
| OCA (OCH)            | A       |   |      |      | B          |      |                    |   | C |   |   |         | D  |   |   |   | GROUND SPEED |      |      |      |      |     |                |
| STRAIGHT-IN APPROACH |         |   |      |      | 1040 (390) |      |                    |   |   |   |   |         | kt |   |   |   |              | 60   | 90   | 120  | 150  | 180 |                |
| CIRCLING APPROACH    | ft AMSL |   | 1220 | 1220 | 1440       | 1730 | FAF - MAPt 4.47 NM |   |   |   |   | MIN:sec |    |   |   |   | 4:28         | 2:58 | 2:14 | 1:47 | 1:29 |     |                |
|                      | VIS. m  |   | 1900 | 2800 | 3700       | 4600 |                    |   |   |   |   |         |    |   |   |   |              |      |      |      |      |     |                |

## AD 2 LHPP INSTRUMENT APPROACH CHART NDB RWY 16

Arrivals on 285° - 345° may enter the base turn procedure directly at 4000  
above PP NDB according to the advice of POGÁNY INFO.  
Other arrivals shall enter the holding procedure.

### NDB approach from PP NDB:

Initial altitude: 4000. 185 KIAS max.

Leave PP NDB on QDR 315 and descend to 3400.

At D 8.4 PCS DME turn right to 155° inbound PP NDB and descend to 2700.

Proceed to FAF at D 5.8 PCS DME and descend to 1220.

At step-down fix D 2.0 PCS DME proceed to PP NDB and descend to 1040.

### Holding procedure:

Holding fix: PP NDB.

Left hand holding pattern.

Inbound track: 335°

Outbound track: 155°

Rate of turn: 3°/sec. or 25° bank angle  
(whichever requires lesser bank)

Outbound timing: 1 min.

Minimum holding altitude: 4000

Final approach descent: 3.66°