

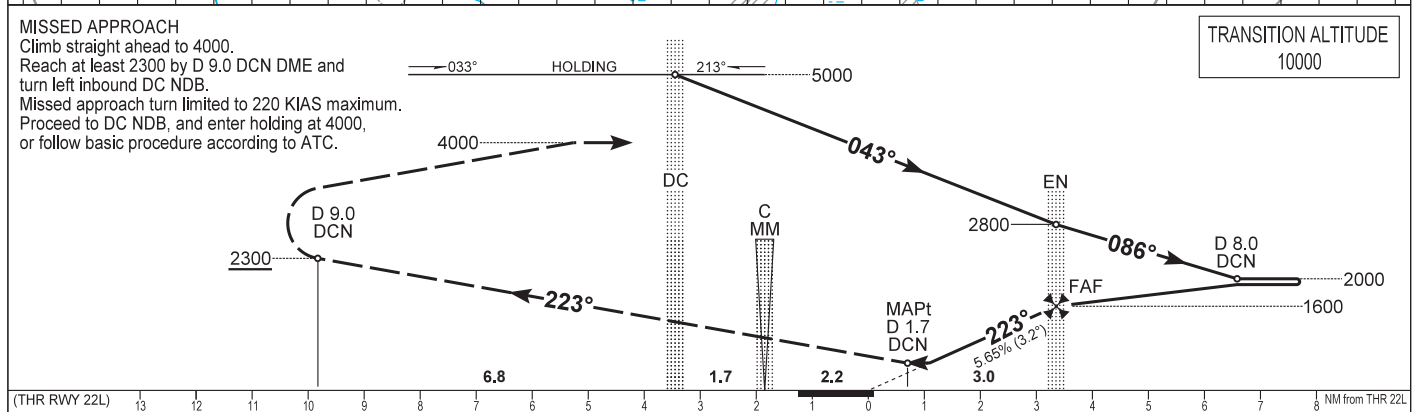
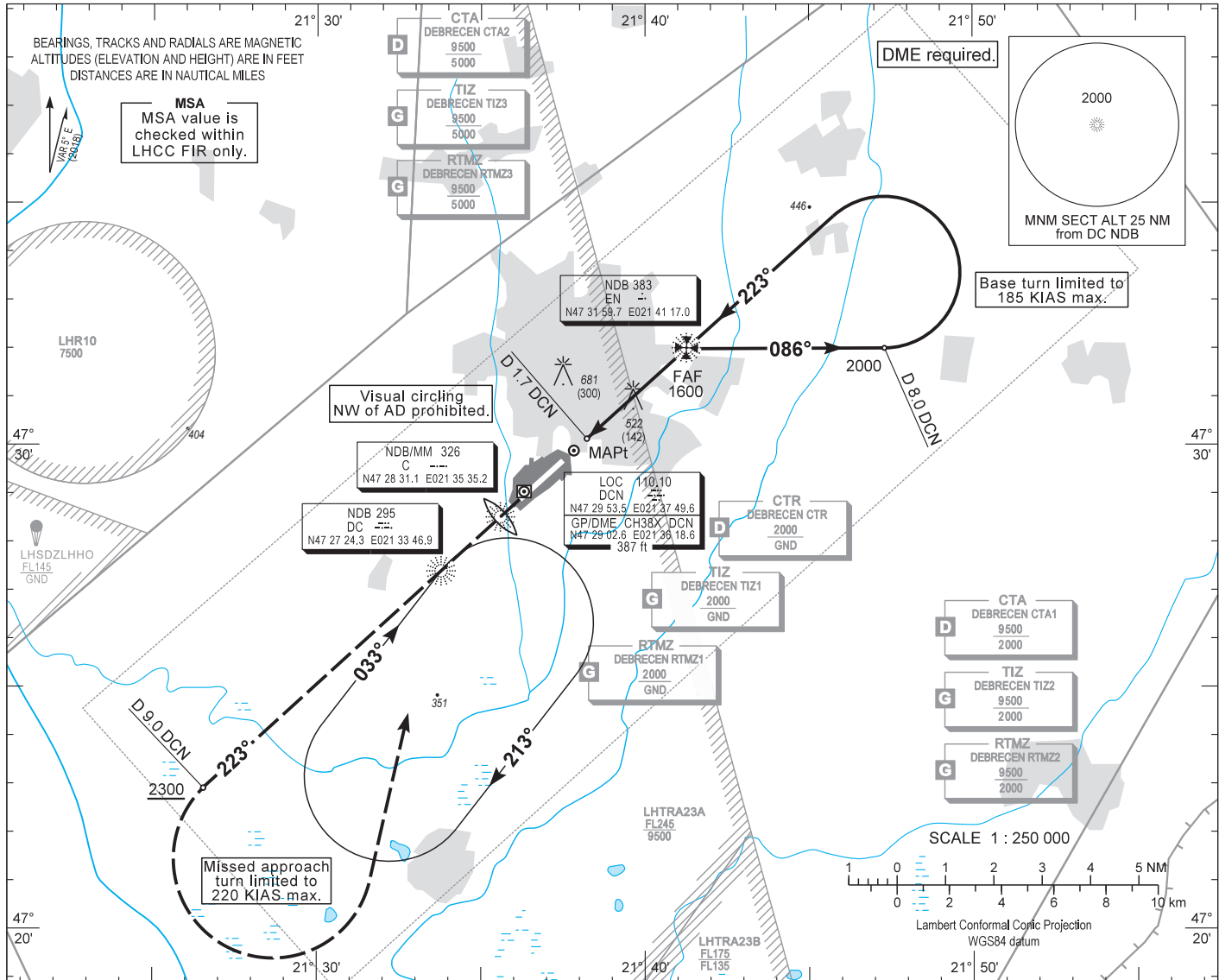
AIP HUNGARY

INSTRUMENT
APPROACH
CHART - ICAO

AERODROME ELEV 361
HEIGHTS RELATED TO
THR RWY 22L - ELEV 360

DEBRECEN TOWER 125.910
DEBRECEN INFO 125.910
BUDAPEST INFORMATION (EAST) 133.000

DEBRECEN
NDB RWY 22L
(ACFT CAT A, B, C, D)



(THR RWY 22L)	13	12	11	10	9	8	7	6	5	4	3	2	1	0	1	2	3	4	5	6	7	8	NM from THR 22L				
OCA (OCH)					A	B	C	D																			
STRAIGHT-IN APPROACH					920 (560)																						
CIRCLING APPROACH SE of AD only	ft AMSL	830	860	960	1050																						
	VIS. m	1900	2800	3700	4600																						
														DME DCN	NM	4.0	3.0										
														DIST THR / RWY 22L	NM	2.8	1.8										
														ALTITUDE	ft	1380	1030										
Timing not authorised for defining the MAPt.																											

GROUND SPEED	kt	60	90	120	150	180
FAF - MAPt 2.95 NM	MIN:sec	2:57	1:58	1:28	1:11	0:59

AD 2 LHDC INSTRUMENT APPROACH CHART NDB RWY 22L

NDB approach from DC NDB:

Initial altitude: 5000.
Proceed to EN NDB and descend to 2800 .
At EN NDB turn right to 086° and descend to 2000 .
Fly outbound to D 8.0 DCN DME and turn left to track 223° inbound EN NDB (185 KIAS max.).
Proceed to EN NDB and descend to 1600.
At EN NDB descend to 920 on track 223°.

Holding procedure:

Holding fix: DC NDB.
Right hand holding pattern.
Maximum speed: 220 KIAS
Inbound track: 033°
Outbound track: 213°
Rate of turn: 3°/sec. or 25° bank angle
(whichever requires lesser bank)
Outbound timing: 1 min.
Minimum holding altitude: 5000
4000 for Missed Approach

Final approach descent: 3.23°