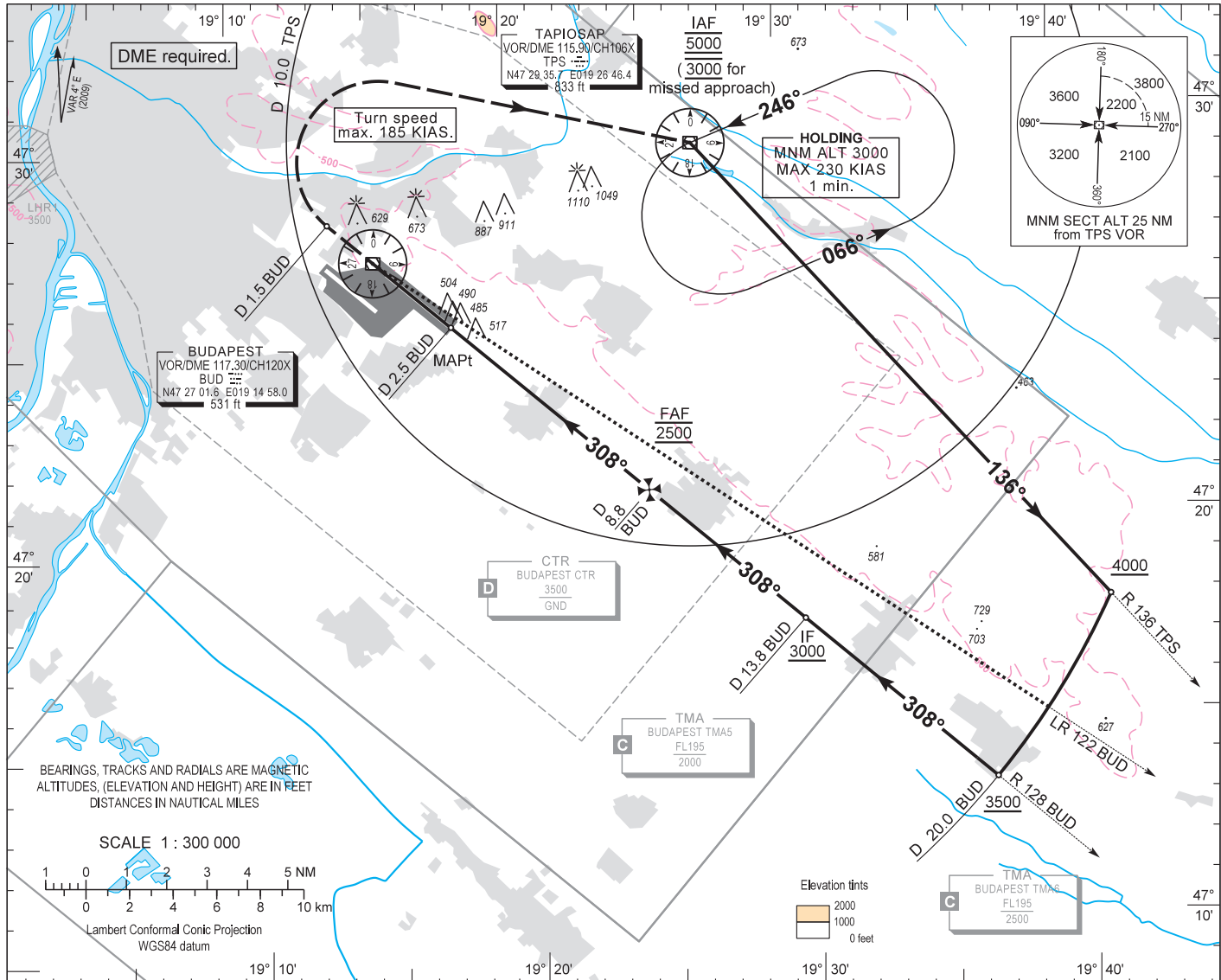


AIP HUNGARY

INSTRUMENT APPROACH CHART - ICAO
AERODROME ELEV 496
HEIGHTS RELATED TO THR RWY 31R - ELEV 416

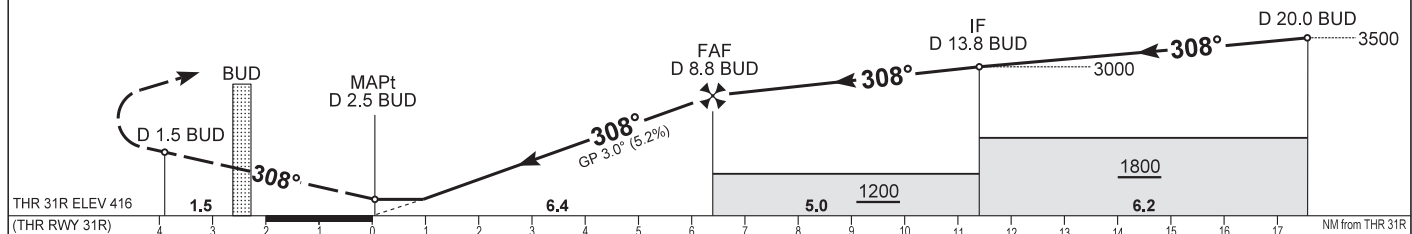
BUDAPEST APP 122.975 123.860
BUDAPEST TOWER 118.100
BUDAPEST INFORMATION (NORTH) 119.350
BUDAPEST GROUND 121.910
BUDAPEST DELIVERY 134.540
ATIS 132.380 (117.300)
119.350

BUDAPEST/LISZT FERENC
VOR RWY 31R
(ACFT CAT A, B, C, D)



MISSED APPROACH
Climb to 3000 initially on R 128 BUD inbound.
After passing the station continue on R 308 BUD outbound.
When passing D 1.5 BUD on R 308 BUD turn right direct to TPS VOR.
Maximum turning speed 185 KIAS.
At 3000 enter published holding pattern at TPS VOR/DME.

TRANSITION ALTITUDE
10000



OCA (H)	A	B	C	D
STRAIGHT-IN APPROACH	770 (360)			
CIRCLING	980	1190	1310	1510

DME BUD	NM	8.0	7.0	6.0	5.0	4.0
DIST THR / RWY 31R	NM	5.5	4.5	3.5	2.5	1.5
ALTITUDE	ft	2220	1900	1580	1260	940

Timing not authorized to define the MAPt.

GS	kt	60	90	120	150	180
FAF - THR 31R (6.4 NM)	min:sec	6:24	4:16	3:12	2:34	2:08
Rate of descent (319 ft/NM)	ft/min	320	480	640	800	960

AD 2 LHBP INSTRUMENT APPROACH CHART VOR RWY 31R

VOR approach procedure:

Initial altitude 5000.

Leave TPS VOR on R 136 TPS outbound and descend 4000.

At D 20.0 BUD turn right and join CW D 20.0 BUD DME arc, descend 3500.

After crossing R 122 BUD leading radial turn right and intercept R 128 BUD inbound (final track), to D 13.8 BUD (IF) descend 3000.

When crossing D 8.8 BUD (FAF) at 2500, descend to published minimum altitude.