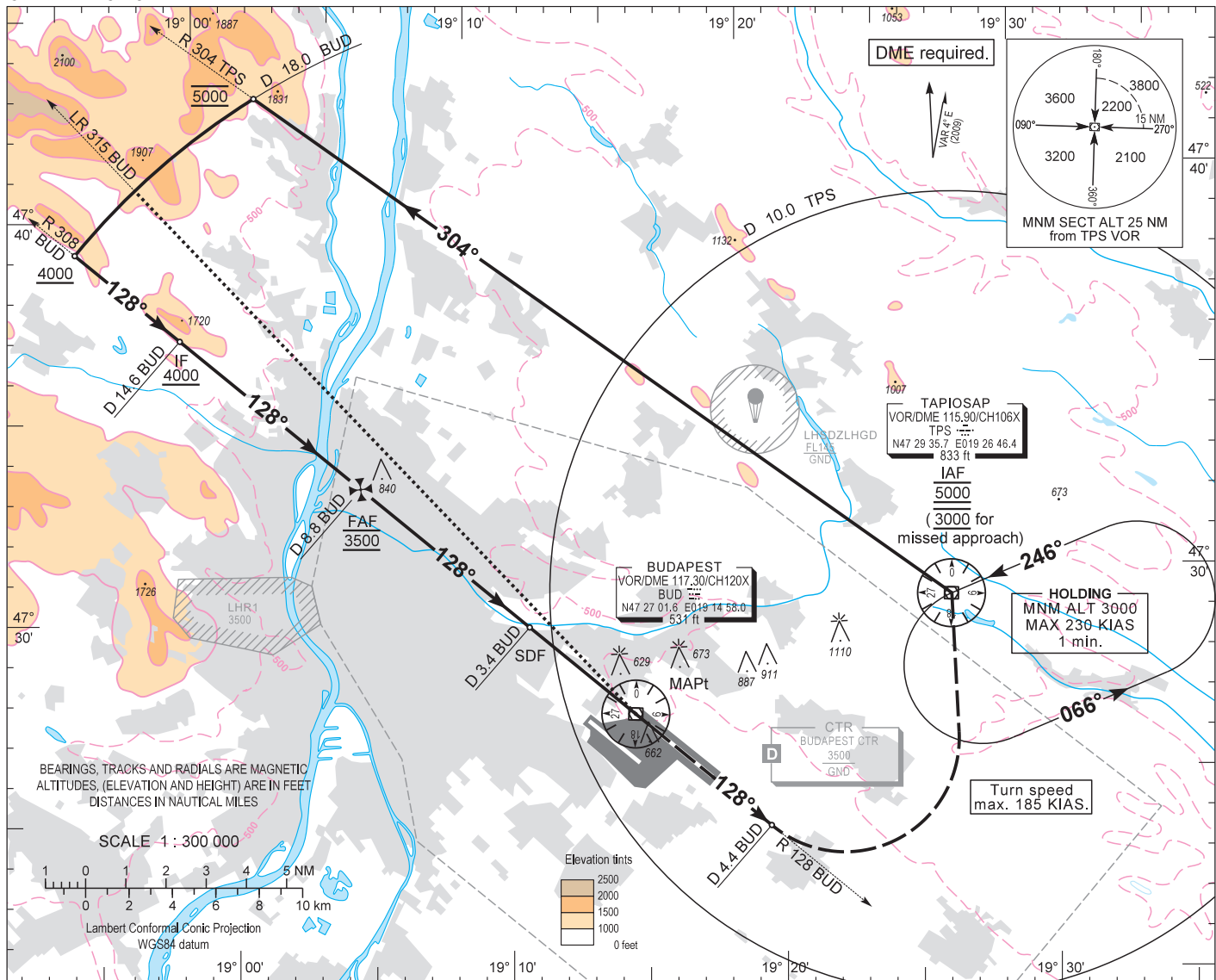


AIP HUNGARY

INSTRUMENT APPROACH CHART - ICAO
AERODROME ELEV 496
HEIGHTS RELATED TO THR RWY 13L - ELEV 496

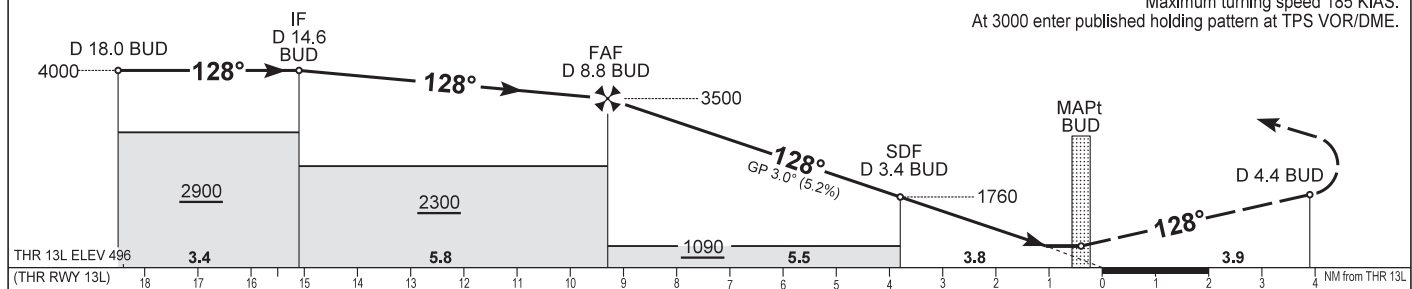
BUDAPEST APP 122.975 123.860
BUDAPEST TOWER 118.100
BUDAPEST INFORMATION (NORTH) 119.350
BUDAPEST GROUND 121.910
BUDAPEST DELIVERY 134.540
ATIS 132.380 (117.300)
119.350

BUDAPEST/LISZT FERENC
VOR RWY 13L
(ACFT CAT A, B, C, D)



TRANSITION ALTITUDE
10000

MISSED APPROACH
Climb to 3000 and continue on R 128 BUD outbound.
When passing D 4.4 BUD on R 128 BUD turn left direct to TPS VOR/DME.
Maximum turning speed 185 KIAS.
At 3000 enter published holding pattern at TPS VOR/DME.



OCA (H)	A	B	C	D	DME BUD	NM	8.0	7.0	6.0	5.0	4.0	3.0	2.0	1.0
STRAIGHT-IN APPROACH	880 (390)				DIST THR / RWY 13L	NM	8.5	7.5	6.5	5.5	4.5	3.5	2.5	1.5
CIRCLING	980	1190	1310	1510	ALTITUDE	ft	3250	2930	2620	2300	1980	1660	1340	1020

Timing not authorized to define the MAPt.

GS	kt	60	90	120	150	180
FAF - THR 13L (9.3 NM)	min:sec	9:18	6:12	4:39	3:43	3:06
Rate of descent (319 ft/NM)	ft/min	320	480	640	800	960

AD 2 LHBP INSTRUMENT APPROACH CHART VOR RWY 13L

VOR approach procedure:

Initial altitude: 5000.

Leave TPS on R 304 TPS and maintain 5000.

When reaching D 18.0 BUD turn left and join D 18.0 BUD DME arc CCW and descend 4000.
After crossing R 315 BUD leading radial turn left and intercept R 308 BUD (final track) inbound.
When crossing D 8.8 BUD at 3500, descend to published minimum altitude.