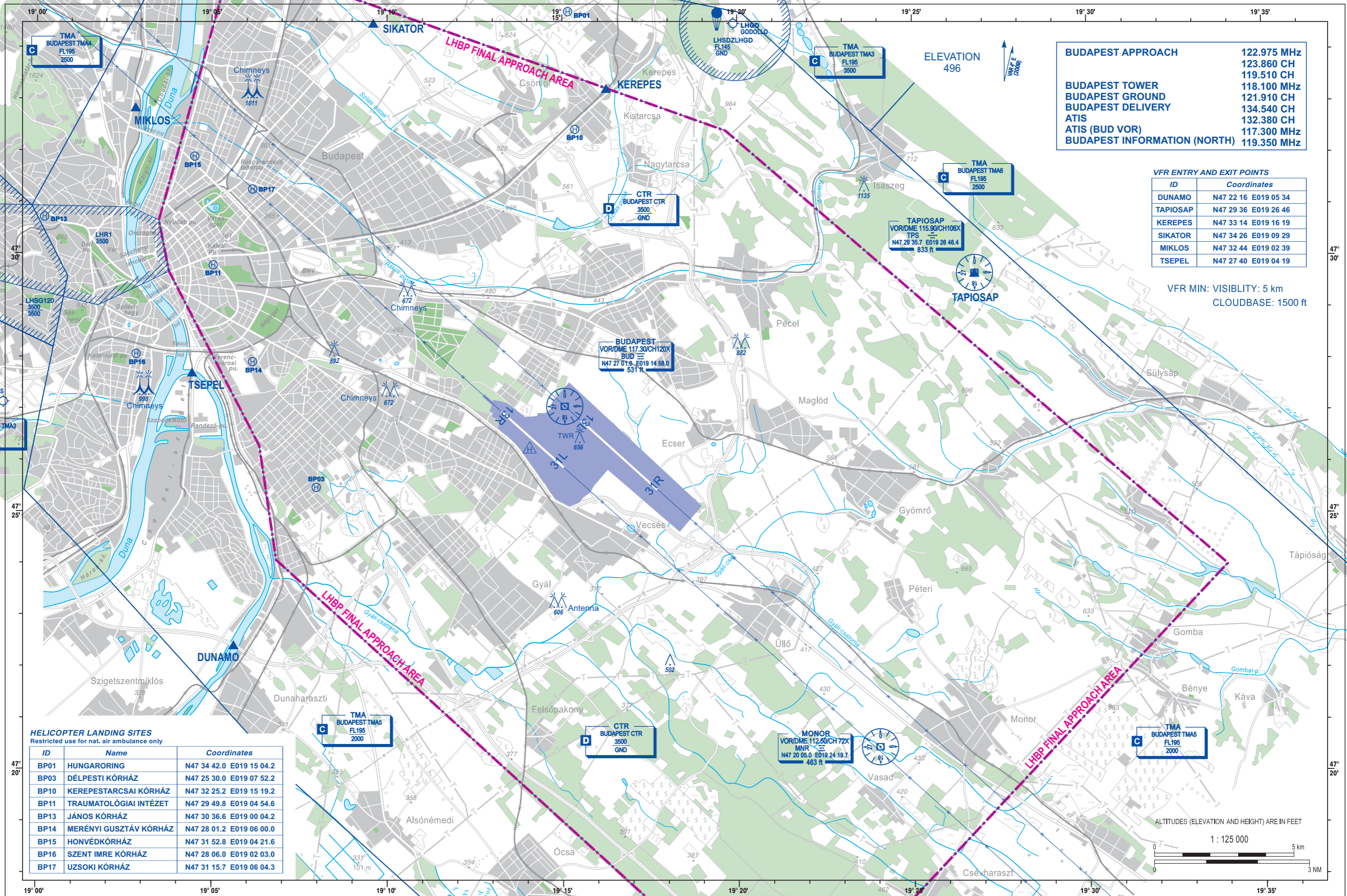


AIP HUNGARY

BUDAPEST/LISZT FERENC - VISUAL APPROACH CHART - ICAO



BUDAPEST APPROACH	122.975 MHz
	123.860 CH
	119.510 CH
BUDAPEST TOWER	118.100 MHz
BUDAPEST GROUND	121.910 CH
BUDAPEST DELIVERY	134.540 CH
ATIS	132.380 CH
ATIS (BUD VOR)	117.300 MHz
BUDAPEST INFORMATION (NORTH)	119.350 MHz

VFR ENTRY AND EXIT POINTS	
ID	Coordinates
DUNAMO	N47 22 16 E019 05 34
TAIOSAP	N47 29 36 E019 26 46
KEREPES	N47 33 14 E019 16 19
SIKATOR	N47 34 26 E019 09 29
MIKLOS	N47 32 44 E019 02 39
TSEPEL	N47 27 40 E019 04 19

VFR MIN: VISIBILITY: 5 km
CLOUDBASE: 1500 ft

HELICOPTER LANDING SITES		
Restricted use for nat. air ambulance only		
ID	Name	Coordinates
BP01	HUNGARORING	N47 34 42.0 E019 15 04.2
BP03	DÉLPESTI KÓRHÁZ	N47 25 30.0 E019 07 52.2
BP10	KEREPESTARCSAI KÓRHÁZ	N47 32 25.2 E019 15 19.2
BP11	TRAUMATOLÓGIAI INTÉZET	N47 29 49.8 E019 04 54.6
BP13	JÁNOS KÓRHÁZ	N47 30 36.6 E019 00 04.2
BP14	MERÉNYI GUSZTÁV KÓRHÁZ	N47 28 01.2 E019 06 00.0
BP15	HONVÉDKÓRHÁZ	N47 31 52.8 E019 04 21.6
BP16	SZENT IMRE KÓRHÁZ	N47 28 06.0 E019 02 03.0
BP17	UZSOKI KÓRHÁZ	N47 31 15.7 E019 06 04.3

ALTITUDES (ELEVATION AND HEIGHT) ARE IN FEET



THIS PAGE IS INTENTIONALLY LEFT BLANK