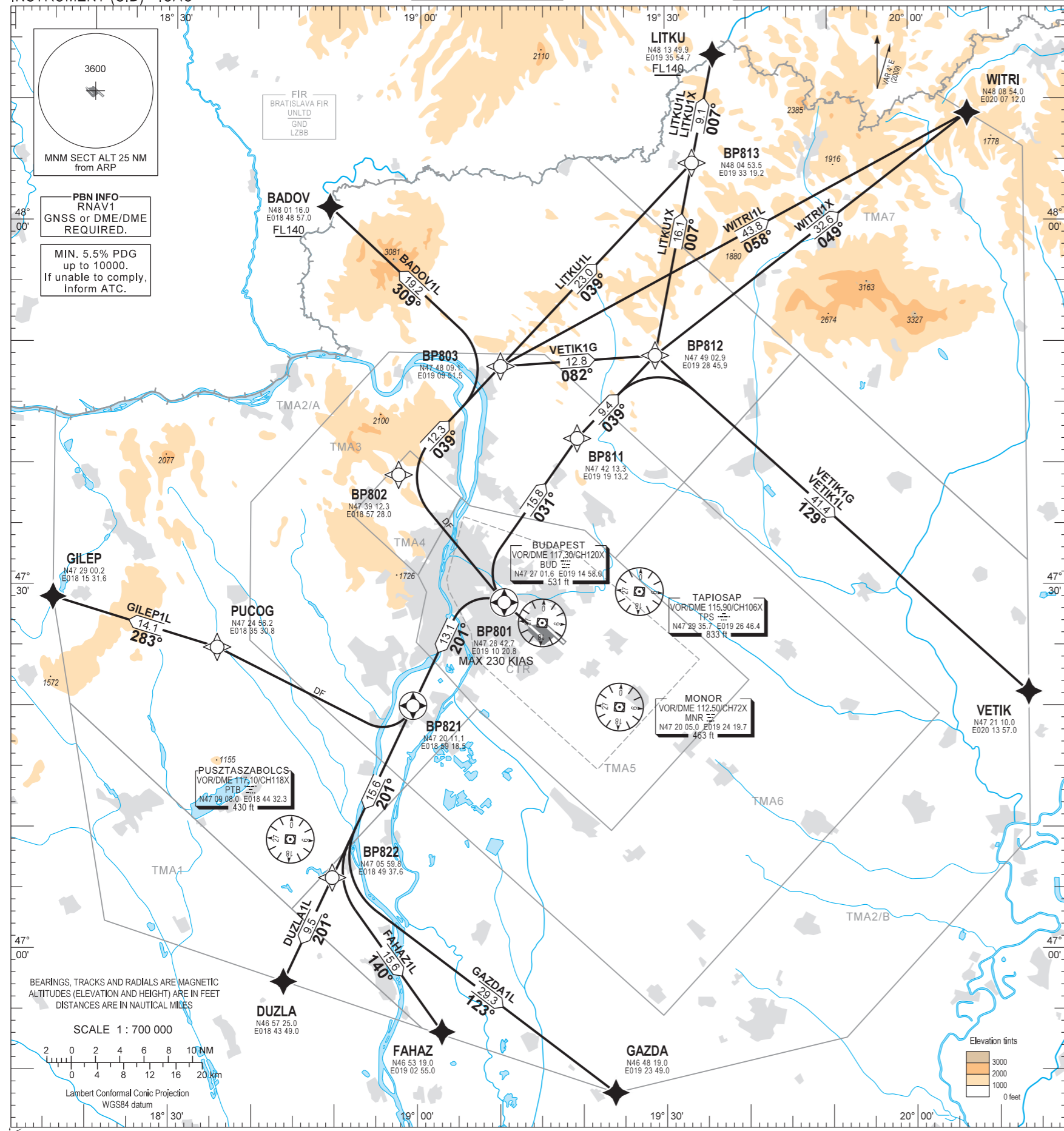


STANDARD DEPARTURE CHART -
INSTRUMENT (SID) - ICAO

TRANSITION ALTITUDE
10000

BUDAPEST APP 122.975 123.860 BUDAPEST GROUND 121.910
119.510 BUDAPEST DELIVERY 134.540
BUDAPEST TOWER 118.100 ATIS 132.380 (117.300)
BUDAPEST INFORMATION (NORTH) 119.350

BUDAPEST/LISZT FERENC
RNAV RWY 31L
BADOV1L, DUZLA1L, FAHAZ1L, GAZDA1L, GILEP1L,
WITRI1L, WITRI1X, LITKU1L, LITKU1X, VETIK1G, VETIK1L



An aeroplane should not be diverted from its assigned route unless:
it is necessary for the safety of the aeroplane (e.g. for avoidance of severe weather or to resolve a traffic conflict).

CLIMBING:
Min. 5.5% PDG up to 10000. If unable to comply, inform ATC. After departure climb initially 7000. Further climb only by ATC.

CONTACT:
If pilot not otherwise instructed by Budapest TWR, all departing aircraft, irrespective of the assigned SID, when passing 3000, shall contact Budapest APP on 122.975.

R/T FAILURE:
If a departing controlled aircraft having acknowledged an initial (eg. 7000) or intermediate clearance, to climb to a level other than the one specified in the filed FPL for the en-route phase of the flight and no time or geographical limit was included in the clearance, should maintain for a period of seven minutes the level (eg. 7000) to which it was cleared and then should climb to the level included in the filed FPL unless the cruising level was definitely specified in the en-route clearance.

SID NAME	PROCEDURE	RESTRICTIONS
VETIK1L	To BP801 climb on course 308°. To BP811 on course 031°, to BP812, to VETIK.	
VETIK1G	To BP801 climb on course 308°. Direct to BP802. To BP803, to BP812, to VETIK.	
WITRI1X	To BP801 climb on course 308°. To BP811 on course 031°, to BP812, to WITRI.	
WITRI1L	To BP801 climb on course 308°. Direct to BP802. To BP803, to WITRI.	
LITKU1X	To BP801 climb on course 308°. To BP811 on course 031°, to BP812, to BP813, to LITKU at or above FL140.	
LITKU1L	To BP801 climb on course 308°. Direct to BP802. To BP803, to BP813, to LITKU at or above FL140.	MAX 230 KIAS at BP801.
BADOV1L	To BP801 climb on course 308°. Direct to BP802. To BP803, to BADOV at or above FL140.	
GILEP1L	To BP801 climb on course 308°. To BP821 on course 201°. Direct to PUCOG. To GILEP.	
DUZLA1L	To BP801 climb on course 308°. To BP821 on course 201°. To BP822, to DUZLA.	
FAHAZ1L	To BP801 climb on course 308°. To BP821 on course 201°. To BP822, to FAHAZ.	
GAZDA1L	To BP801 climb on course 308°. To BP821 on course 201°. To BP822, to GAZDA.	

Recommended navaid: BUD VOR.

BUDAPEST TMA						BUDAPEST CTR	
TMA1		TMA3		TMA6		CTR	
TMA2/A		TMA4		TMA7			
TMA2/B		TMA5					

THIS PAGE IS INTENTIONALLY LEFT BLANK